

CONSULTANT:

Edge
 Consulting Engineers, Inc.
 624 WATER STREET
 PRAIRIE DU SAC, WI 53578
 608.644.1449 VOICE
 608.644.1549 FAX
 www.edgeconsult.com

CLIENT:


TITLE SHEET
SUN PRAIRIE POLICE (BIRD STREET WT)
SUN PRAIRIE, WISCONSIN

SUBMITTAL:		
INT.	DATE:	DESCRIPTION:

CHECKED BY	AJO
PLOT DATE	11/8/2022
PROJECT NUMBER	35241
SET TYPE	FR
SHEET NUMBER	G-001



SUN PRAIRIE POLICE (BIRD STREET WT) SUN PRAIRIE, WISCONSIN EQUIPMENT CABINET INSTALLATION

PROJECT DIRECTORY

ENGINEER:
 EDGE CONSULTING ENGINEERS, INC.
 624 WATER STREET
 PRAIRIE DU SAC, WI 53578
 CONTACT: ARLEN OSTRENG, PE
 PHONE: (608) 644-1449

OWNER:
 SUN PRAIRIE UTILITIES
 125 W. MAIN STREET
 SUN PRAIRIE, WI 53590
 CONTACT: RICK WICKLUND, UTILITY MANAGER
 PHONE: (608) 960-4047 EXT. 231

TECHNOLOGY CONSULTANT:
 GENERAL COMMUNICATIONS, INC.
 2880 COMMERCE PARK DR
 MADISON, WI 53719
 CONTACT: GARY PELLETIER
 PHONE: (608) 310-7122

ELECTRICAL SERVICE PROVIDER:
 SUN PRAIRIE UTILITIES
 125 W. MAIN STREET
 SUN PRAIRIE, WI 53590
 CONTACT: RICK WICKLUND, UTILITY MANAGER
 PHONE: (608) 960-4047 EXT. 231

PROJECT INFO

SITE ADDRESS:
 991 N BIRD ST
 SUN PRAIRIE, WI 53590

PROPERTY OWNER:
 SUN PRAIRIE UTILITIES
 125 W. MAIN STREET
 SUN PRAIRIE, WI 53590

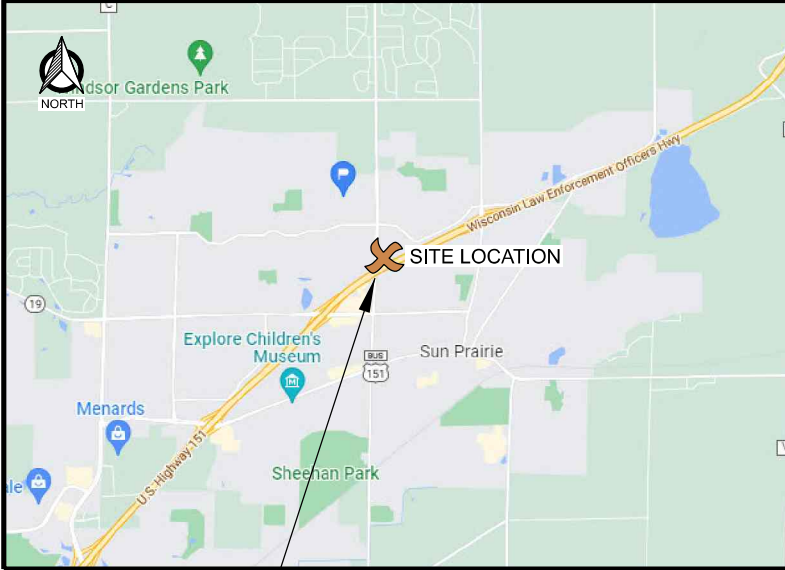
TOWER COORDINATES (PER PREVIOUS DRAWINGS):
 LAT (NAD83/2011): 43°-11'-36.0" N (43.193333)
 LONG (NAD83/2011): 89°-13'-31.1" W (-89.225306)
 GROUND ELEVATION (NAVD 88): 1014'
 ASR NUMBER: N/A

PARCEL ID: 081105287006

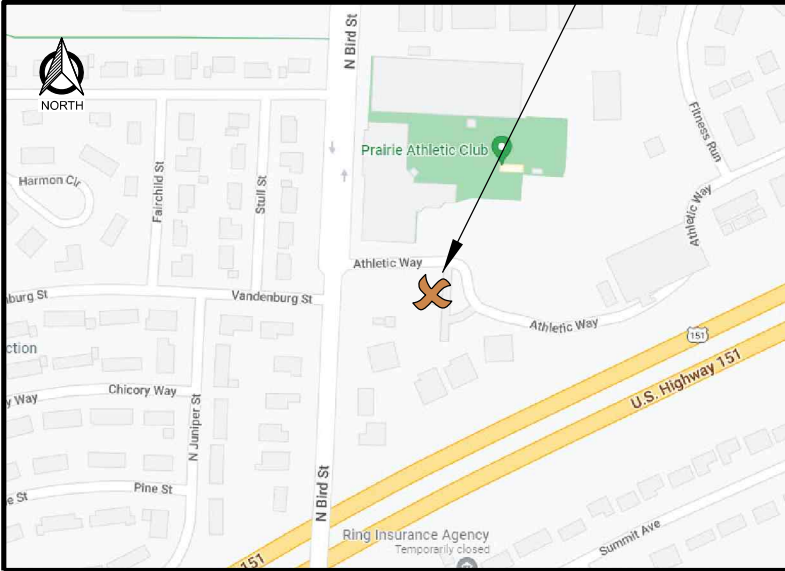
ZONING CLASSIFICATION: (NC) NEIGHBORHOOD COMMERCIAL

SHEET INDEX

NO.:	SHEET TITLE
G-001	TITLE SHEET
C-101	OVERALL SITE PLAN
C-102	COMPOUND PLAN
C-501	SITE DETAILS
A-101	OUTDOOR EQUIPMENT CABINET DETAILS
E-101	GROUNDING PLAN
E-102	UTILITY PLAN
E-501	GROUNDING DETAILS
E-502	GROUNDING DETAILS
E-504	UTILITY DETAILS
E-505	UTILITY RACK DETAILS



SITE LOCATION





TO OBTAIN LOCATION OF PARTICIPANTS' UNDERGROUND FACILITIES BEFORE YOU DIG IN WISCONSIN, CALL DIGGERS HOTLINE

TOLL FREE: 1-800-242-8511
 FAX A LOCATE: 1-800-242-5811

WI STATUTE 182.0175 (1974) REQUIRES MIN. OF 3 WORK DAYS NOTICE BEFORE YOU EXCAVATE

ENGINEER SEAL:

I HEREBY CERTIFY THAT THIS PLAN SET WAS PREPARED BY ME OR UNDER MY DIRECT SUPERVISION OTHER THAN THE EXCEPTIONS NOTED IN THE SHEET INDEX, AND THAT I AM A DULY LICENSED PROFESSIONAL ENGINEER UNDER THE LAWS OF THE STATE OF WISCONSIN.

SIGNATURE: _____

DATE: _____

K:\35200\35241\1\Design\CAD\FR\FRPlan(G-001).dgn

KEYNOTES: (THIS SHEET)

A. OUTDOOR RADIO EQUIPMENT CABINET ON CONCRETE PAD



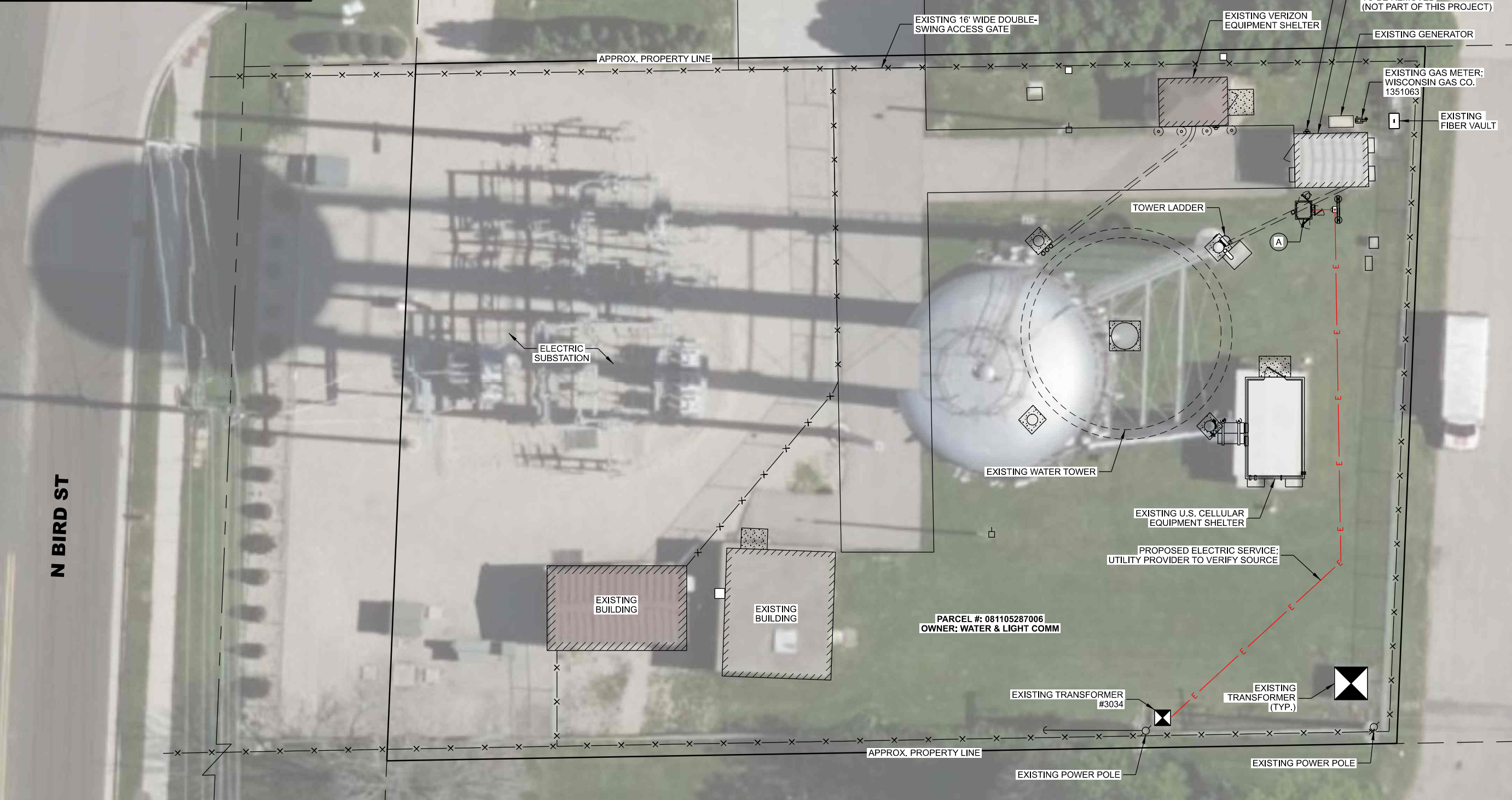
CONSULTANT:

Edge
Consulting Engineers, Inc.
624 WATER STREET
PRAIRIE DU SAC, WI 53578
608.644.1449 VOICE
608.644.1549 FAX
www.edgeconsult.com

CLIENT:

GENCOMM

OVERALL SITE PLAN
SUN PRAIRIE POLICE (BIRD STREET WT)
SUN PRAIRIE, WISCONSIN



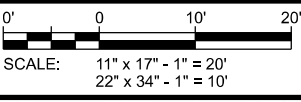
GENERAL NOTES: (THIS SHEET)

1. NORTH ARROW SHOWN AS APPROXIMATE.
2. AERIAL IMAGERY PER BING MAPS.
3. NO PROPERTY SURVEY WAS PERFORMED AS PART OF THIS PROJECT. ALL PROPERTY LINES SHOWN ARE APPROXIMATE.

SUBMITTAL:

INT.	DATE	DESCRIPTION:

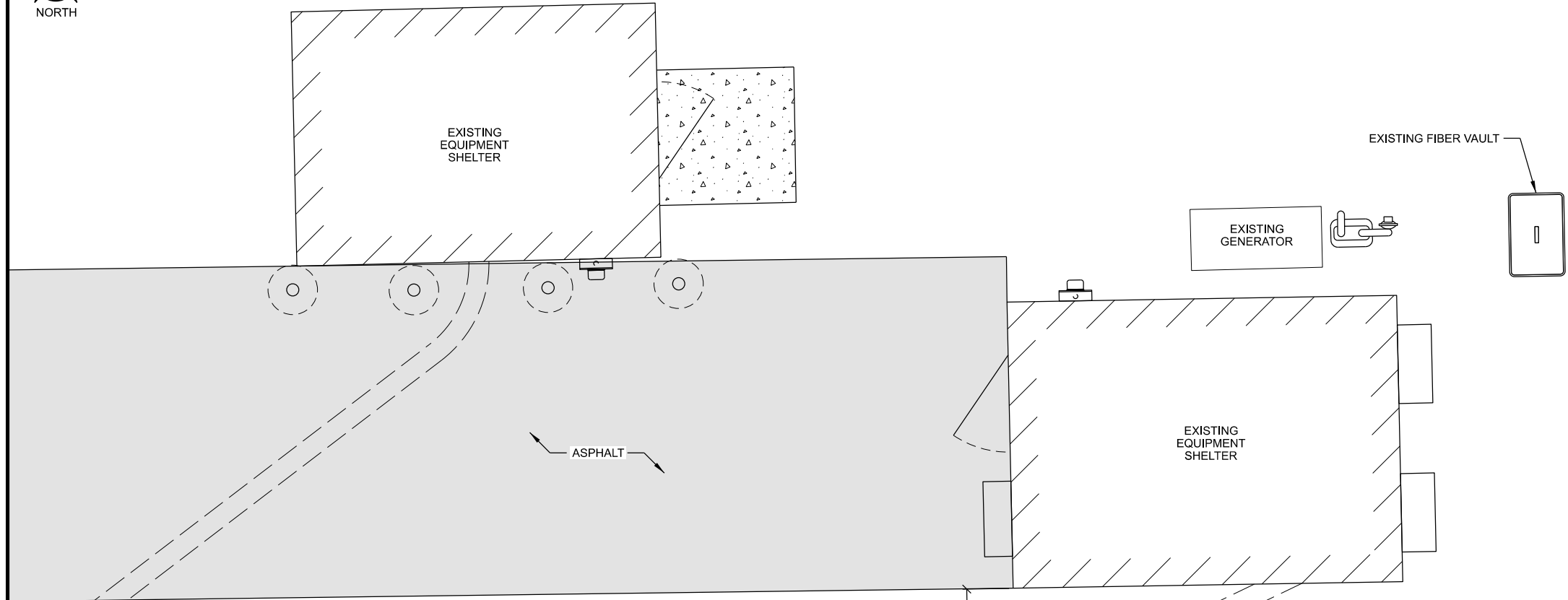
CHECKED BY	AJO
PLOT DATE	11/8/2022
PROJECT NUMBER	35241
SET TYPE	FR
SHEET NUMBER	C-101



R:\35200\35241\Design\CAD\FR\FRPlotC-101.dgn

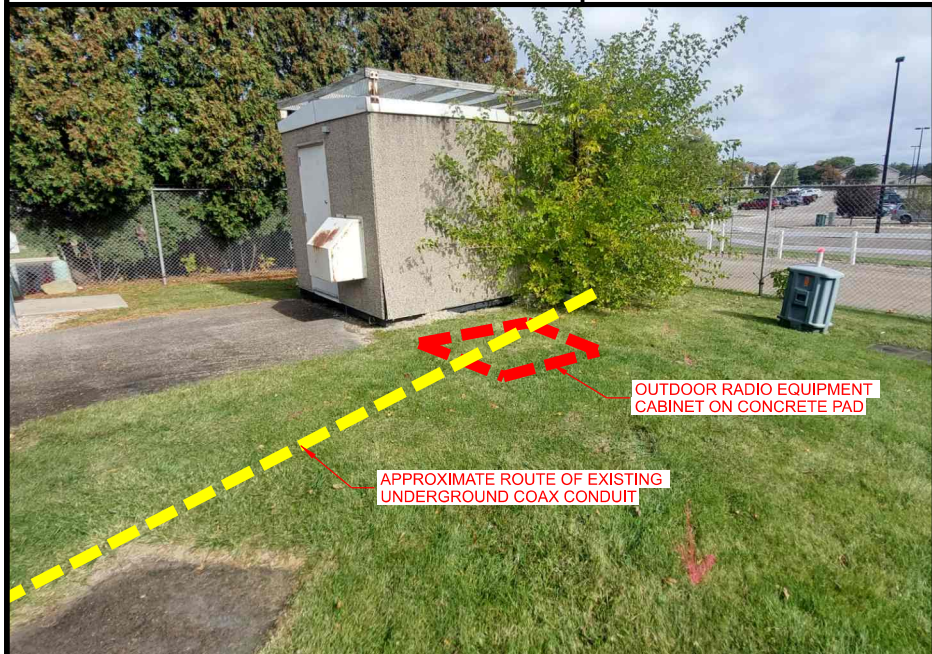
KEYNOTES: (THIS SHEET)

- A. OUTDOOR RADIO EQUIPMENT CABINET ON CONCRETE PAD; SEE C-501 & A-101 FOR DETAILS
- B. SINGLE METER UTILITY RACK; SEE E-505 FOR DETAILS
- C. CONTRACTOR TO LOCATE EXISTING UNDERGROUND PVC CONDUIT AND INSTALL NEW FITTINGS TO CREATE STUB-UP AT NEW CABINET LOCATION.

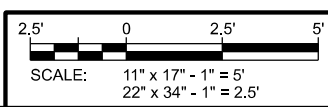
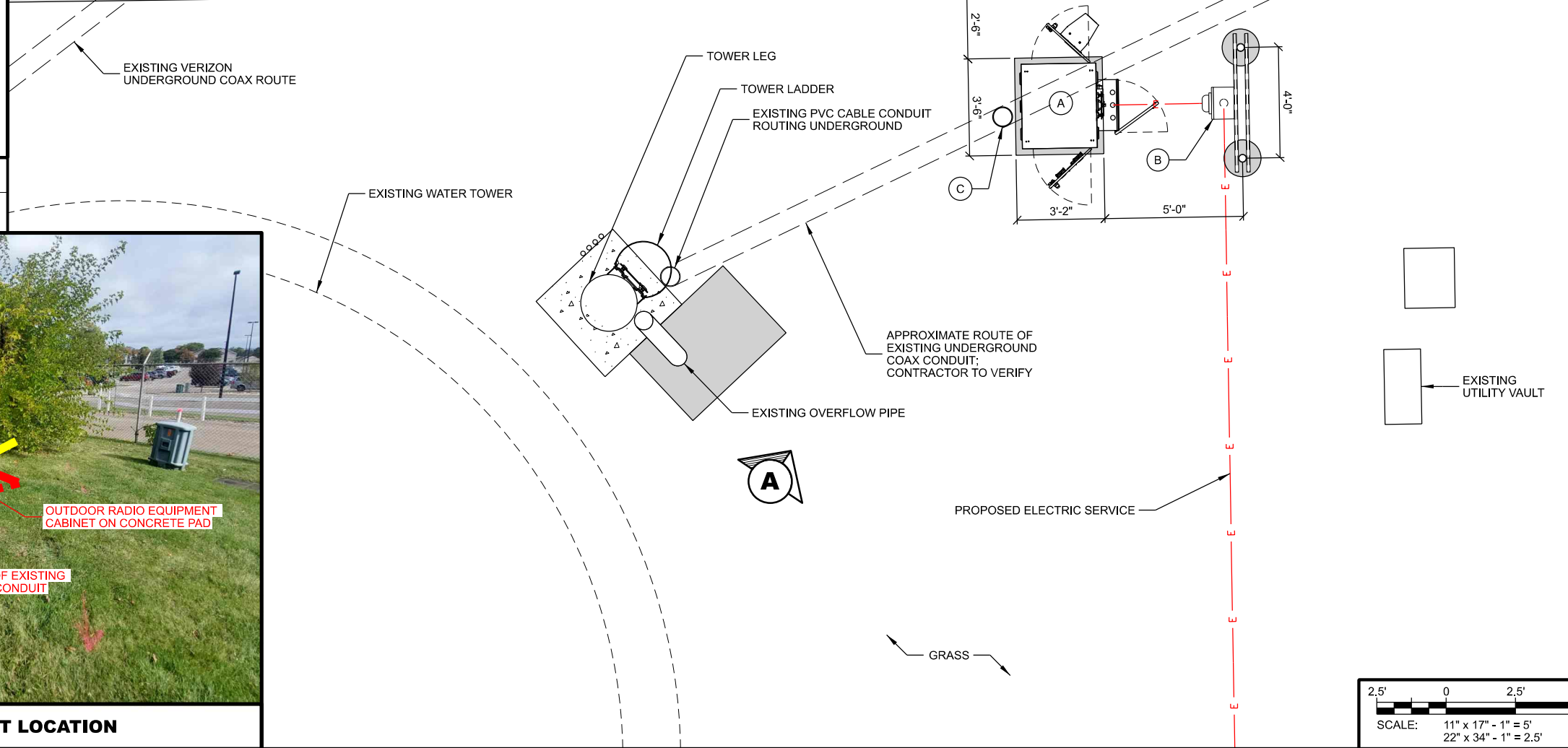


GENERAL NOTES: (THIS SHEET)

- 1. NORTH ARROW SHOWN AS APPROXIMATE.



A PROPOSED EQUIPMENT LOCATION



CONSULTANT:
Edge
Consulting Engineers, Inc.
624 WATER STREET
PRAIRIE DU SAC, WI 53578
608.644.1449 VOICE
608.644.1549 FAX
www.edgeconsult.com

CLIENT:
GENCOMM

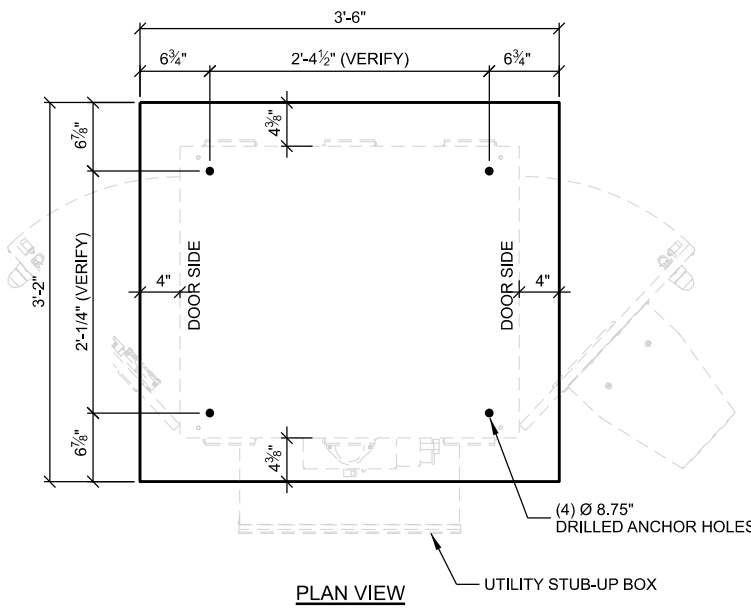
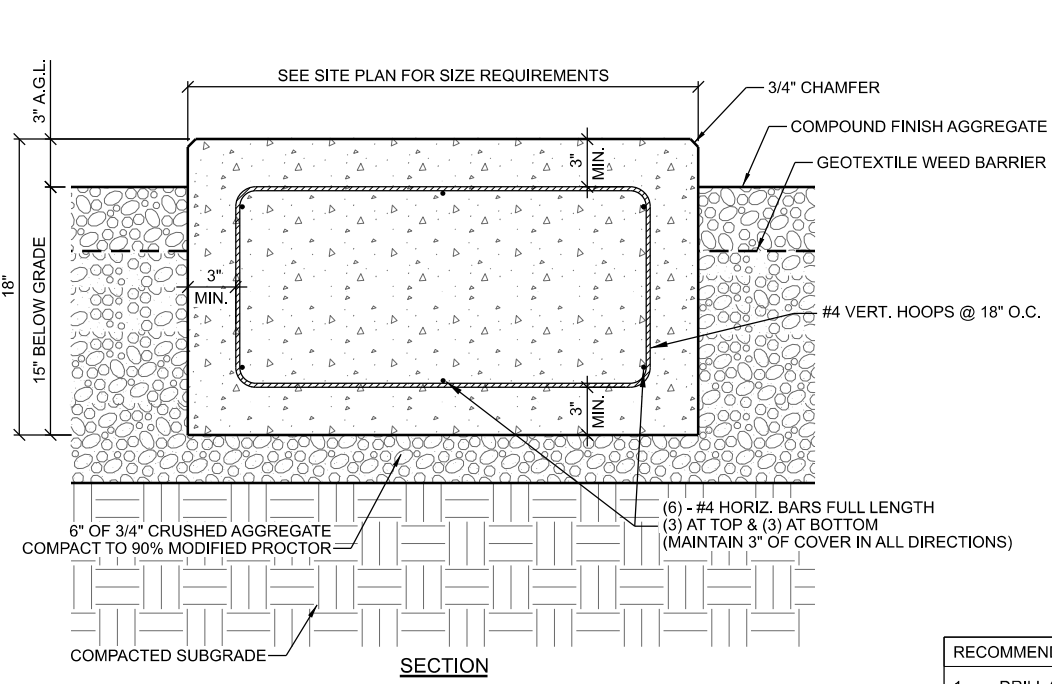
COMPOUND PLAN
SUN PRAIRIE POLICE (BIRD STREET WT)
SUN PRAIRIE, WISCONSIN

SUBMITTAL:

INT.	DATE	DESCRIPTION:

CHECKED BY	AJO
PLOT DATE	11/8/2022
PROJECT NUMBER	35241
SET TYPE	FR
SHEET NUMBER	C-102

R:\35200\35241\Design\CAD\FR\Plan\C-102.dgn



- NOTES:
1. CONCRETE MIX TO BE 4,000 PSI @ 28 DAYS.
 2. FINISH: MEDIUM BROOM.
 3. ALL REBAR SHALL MAINTAIN 3" OF COVER IN ALL DIRECTIONS

- RECOMMENDED PROCEDURE FOR PAD MOUNTING (PER MFG SPECS):
1. DRILL (4) HOLES 3" DEEP, DIA 0.875" (7/8) PER DRILL PATTERN IN CONCRETE PAD
 2. CLEAN HOLES OF DEBRIS
 3. USING A HAMMER, LIGHTLY TAP 3" LAG SLEEVE INTO HOLE UNTIL FLUSH WITH PAD SURFACE
 4. PLACE ENCLOSURE ON PAD WITH ALIGNMENT OF HOLES
 5. USE 2" FENDER WASHER, LOCK WASHER AND SECURE WITH 3" X 1/2" LAG BOLTS
 6. CONTRACTOR TO FIELD VERIFY ANCHOR HOLE SPACING WITH CABINET DIMENSIONS

- CONCRETE AND REINFORCING NOTES:**
1. ALL CONCRETE CONSTRUCTION SHALL BE IN ACCORDANCE WITH LOCAL BUILDING CODE REQUIREMENTS AND MOST CURRENT VERSION OF ACI STANDARDS.
 2. ALL CONCRETE UNLESS SPECIFICALLY NOTED SHALL BE NORMAL WEIGHT (145 PCF) AND SHALL ACHIEVE A 28-DAY COMPRESSIVE STRENGTH (f_c) OF 4,000 PSI. EXPOSED EXTERIOR CONCRETE TO BE AIR ENTRAINED WITH 6% +/- 1% AIR CONTENT. CONTRACTOR TO PERFORM CONCRETE SLUMP TEST (4" MAX SLUMP). NO WATER TO BE ADDED AFTER SLUMP HAS BEEN MEASURED.
 3. ALL CONCRETE REINFORCING SHALL BE ASTM A615 GRADE 60 AND PLACED IN ACCORDANCE WITH ACI STANDARDS
 4. REMOVE ALL ORGANIC MATERIAL, SOFT AND/OR UNSUITABLE SOILS WITHIN FOUNDATION FOOTPRINT. DO NOT UTILIZE THESE SOILS FOR BACKFILL.
 5. CONSULT GEOTECHNICAL INVESTIGATION REPORT FOR ANTICIPATED SOIL CONDITIONS AND CONSTRUCTION CONSIDERATIONS.
 6. FOUNDATION DESIGN BASED ON A PRESUMPTIVE SOIL BEARING CAPACITY OF 2000 PSF AND MAX. PLASTICITY INDEX OF 20. CONTRACTOR TO CONFIRM BEARING SOILS MEET THESE CONDITIONS BEFORE INSTALLATION.
 7. SOILS NOT MEETING THE DESIGN BEARING STRENGTH SHALL BE UNDERCUT AND REPLACED WITH 3-INCH BREAKER STONE. UNDERCUT ONE FOOT ON EACH SIDE OF THE FOOTING FOR EVERY FOOT IN DEPTH. CONSULT WITH ENGINEER FOR REQUIRED UNDERCUT DEPTH.
 8. CONTRACTOR TO ENSURE POSITIVE DRAINAGE FROM ALL FOUNDATIONS.
 9. FOUNDATION DESIGN BASED ON INFORMATION PROVIDED BY SHELTER MFG. (WEIGHT, LIVE LOAD, ETC.). CONTRACTOR TO VERIFY EXACT SHELTER SIZE AND TYPE.

A CONCRETE PAD - OUTDOOR CABINET PAD MOUNT DETAIL

THIS SPACE INTENTIONALLY LEFT BLANK

THIS SPACE INTENTIONALLY LEFT BLANK

THIS SPACE INTENTIONALLY LEFT BLANK

CONSULTANT:
Edge
 Consulting Engineers, Inc.
 624 WATER STREET
 PRAIRIE DU SAC, WI 53578
 608.644.1449 VOICE
 608.644.1549 FAX
 www.edgeconsult.com

CLIENT:
GENCOMM

SITE DETAILS
SUN PRAIRIE POLICE (BIRD STREET WT)
SUN PRAIRIE, WISCONSIN

SUBMITTAL:

INT.	DATE:	DESCRIPTION:

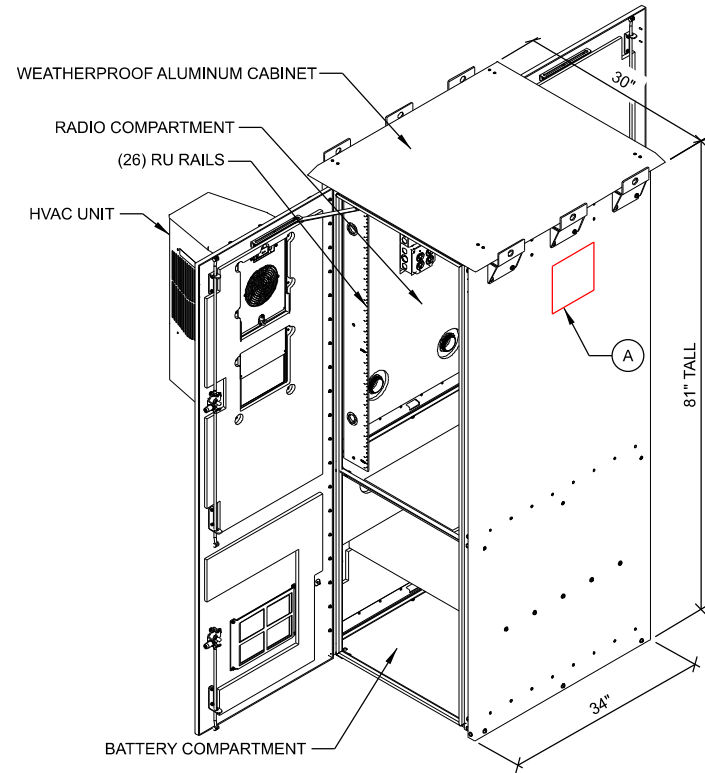
CHECKED BY	AJO
PLOT DATE	11/8/2022
PROJECT NUMBER	35241
SET TYPE	FR
SHEET NUMBER	C-501

KEYNOTES: (THIS SHEET)

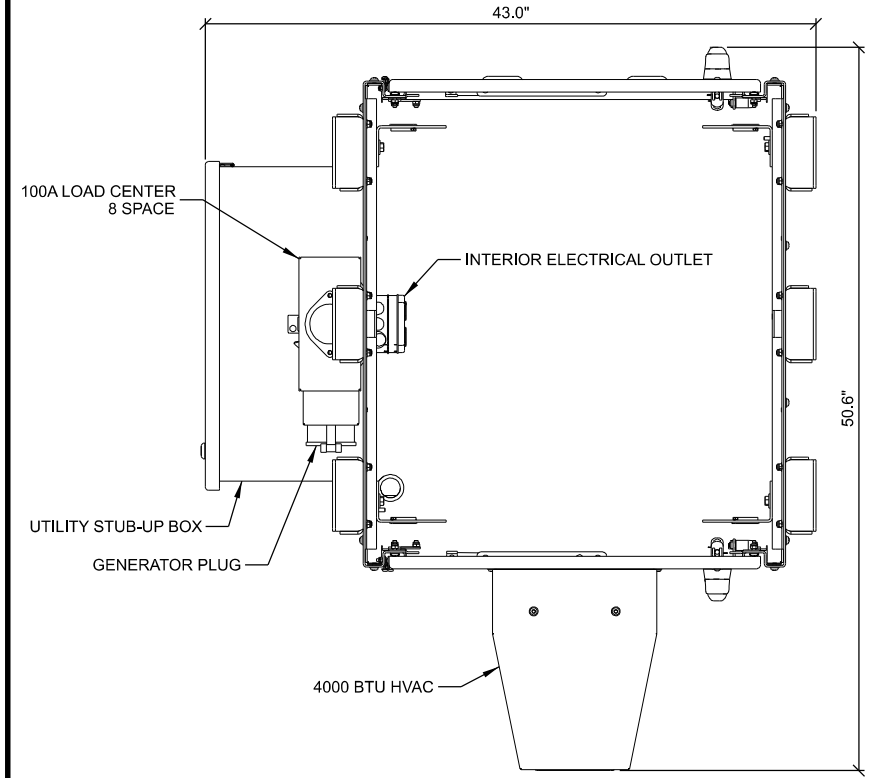
- A. CONTRACTOR TO FIELD CUT TRANSMISSION LINE CABLE ENTRY OPENING INTO CABINET WALL. VERIFY PORT SIZING AND REQUIREMENTS. ORDER CABLE ENTRY FROM DDB UNLIMITED

GENERAL NOTES: (THIS SHEET)

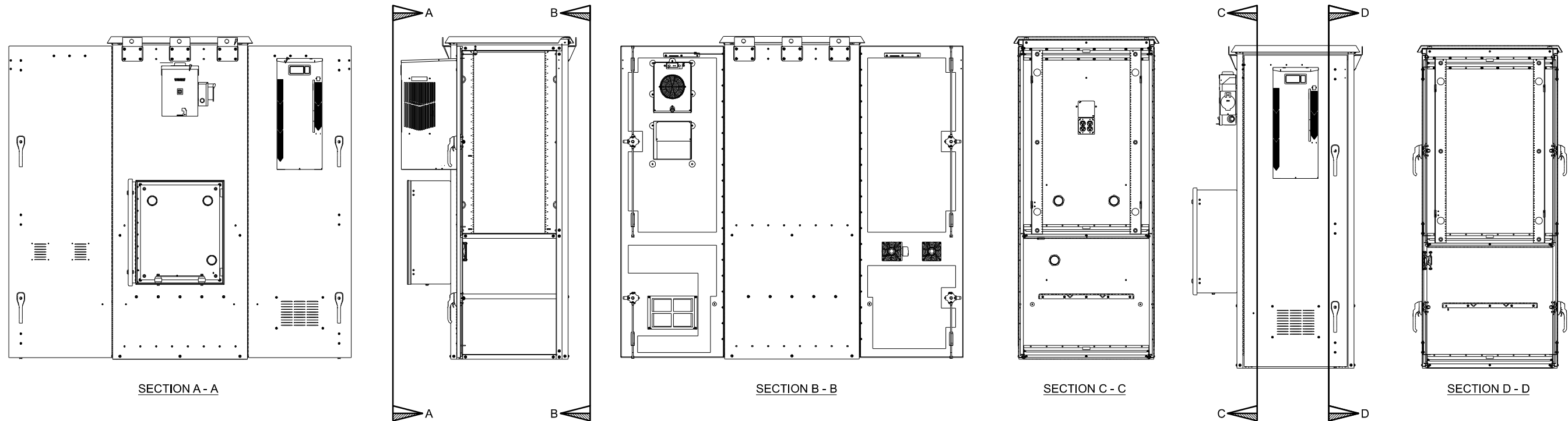
- 1. CABINET DRAWINGS PROVIDED BY:
DDB UNLIMITED
MODEL: 5G-LTE (NEMA 4)
DIMENSIONS: 81"H x 30"W x 34"D (26 RU)
WEIGHT: 550 LBS (BARE CABINET)
WARRANTY: 15 YEAR



A **OUTDOOR CABINET - ISOMETRIC VIEW**



B **OUTDOOR CABINET - PLAN VIEW**



C **OUTDOOR CABINET - ELEVATION VIEWS**

CONSULTANT:
Edge
Consulting Engineers, Inc.
624 WATER STREET
PRAIRIE DU SAC, WI 53578
608.644.1449 VOICE
608.644.1549 FAX
www.edgeconsult.com

CLIENT:
GENCOMM








OUTDOOR EQUIPMENT CABINET DETAILS
SUN PRAIRIE POLICE (BIRD STREET WT)
SUN PRAIRIE, WISCONSIN

SUBMITTAL:		
INT.	DATE:	DESCRIPTION:

CHECKED BY:	AJO
PLOT DATE:	11/8/2022
PROJECT NUMBER:	35241
SET TYPE:	FR
SHEET NUMBER:	A-101

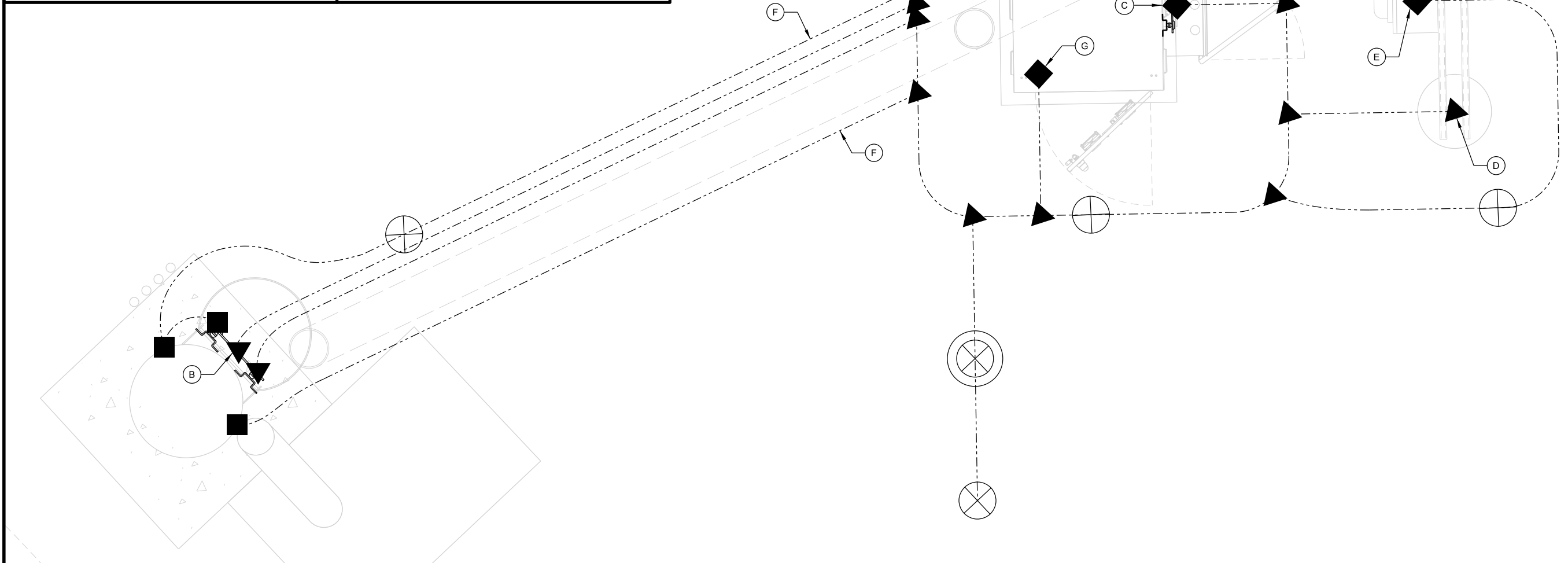
R:\35200\35241\Design\CAD\FR\FRPlotA-101.dgn

GROUNDING LEGEND: (THIS SHEET)

-  GROUND TEST WELL, SEE E-502 FOR DETAILS
-  COPPER CLAD GROUND ROD, (5/8" DIA. x 10' LONG)
SPACE @ 2X GROUND ROD LENGTH (20' O.C. MAX., 6' MIN.)
-  COPPER PLATE, (18" x 18" x 0.032" THK)
SPACE @ 2X GROUND ROD LENGTH (20' O.C. MAX., 6' MIN.)
-  EXOTHERMIC OR UL RATED IRREVERSIBLE CONNECTION
(CADWELD OR HYGROUND)
-  MECHANICAL CONNECTION
(BURNDY 2-HOLE LUG OR APPROVED EQUAL)
-  #2 AWG BARE SOLID TINNED COPPER CONDUCTOR
IN STANDARD GROUND TRENCH, SEE E-502 FOR DETAILS
-  #2 AWG BARE SOLID TINNED COPPER CONDUCTOR
IN ENHANCED GROUND TRENCH, SEE E-502 FOR DETAILS

KEYNOTES: (THIS SHEET)

- A. EQUIPMENT GROUND RING, MAINTAIN 2' SEPARATION FROM PAD FOUNDATION
- B. LOWER TOWER GROUND RF BAR, (2) LEADS TO EQUIPMENT GROUND RING & (1) TO TOWER STEEL; SEE DETAIL D/E-501
- C. INTERIOR CABINET GROUND BAR (MGB), (1) LEAD TO EQUIPMENT GROUND RING; SEE DETAIL F/E-502
- D. UTILITY POST GROUND; SEE E-501 FOR DETAILS
- E. A/C METER BOX GROUND
- F. EQUIPMENT GROUND RING TO TOWER STEEL, (2) LEADS
- G. GROUND TEST WELL; SEE DETAIL C/E-502 FOR DETAILS
- H. RADIO CABINET ENCLOSURE GROUND, (1) LEAD



GENERAL NOTES: (THIS SHEET)

1. ALL EXTERIOR GROUNDING SHALL MEET OR EXCEED THE CURRENT HARRIS SITE GROUNDING AND LIGHTNING PROTECTION GUIDELINES. REFER TO INSTALLATION MANUAL AE/LZT 123 4618/1 REV F (JUNE 2017).
2. THE GROUNDING SYSTEM & CONDUCTORS SHALL BE TESTED BY CONTRACTOR PRIOR TO BACKFILLING. SYSTEM SHALL PROVIDE 3 OHM OR LESS RESISTANCE UPON COMPLETION.
3. ALL NON-INSULATED GROUND LEADS EXTENDING ABOVE GROUND LEVEL SHALL BE ENCASED IN 1/2" PVC & SEALED WITH SILICONE.
4. GROUND RINGS & TOP OF RODS SHALL BE INSTALLED AT 30" BELOW FINISHED GRADE. (SEE DETAIL A/E-501)
5. INSTALL 18"x18" COPPER PLATES IN LIEU OF GROUND RODS WHEN INSTALLING OVER TOWER FOUNDATION OR WHERE DRIVING GROUND RODS IS NOT FEASIBLE. REFER TO GEOTECH REPORT FOR SOIL CONDITIONS.
6. ALL MECHANICAL GROUND CONNECTIONS TO UTILIZE 2-HOLE LUGS AND STAINLESS-STEEL HARDWARE. PROVIDE ANTI-OXIDANT COMPOUND BETWEEN LUG & CONNECTION POINT. USE COPPER ANTI-OXIDANT FOR COPPER-TO-COPPER CONNECTIONS. SELF-TAPPING SCREWS ARE NOT ALLOWED.
7. ALL ABOVE GRADE CADWELD CONNECTIONS (TO GALVANIZED ITEMS) SHALL BE SPRAYED WITH COLD GALVANIZING COMPOUND TO PREVENT CORROSION.

CONSULTANT:

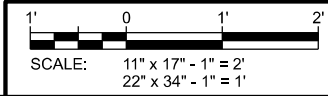
 624 WATER STREET
 PRAIRIE DU SAC, WI 53578
 608.644.1449 VOICE
 608.644.1549 FAX
 www.edgeconsult.com

CLIENT:


GROUNDING PLAN
SUN PRAIRIE POLICE (BIRD STREET WT)
SUN PRAIRIE, WISCONSIN

SUBMITTAL:		
INT.	DATE:	DESCRIPTION:

CHECKED BY:	AJO
PLOT DATE:	11/8/2022
PROJECT NUMBER:	35241
SET TYPE:	FR

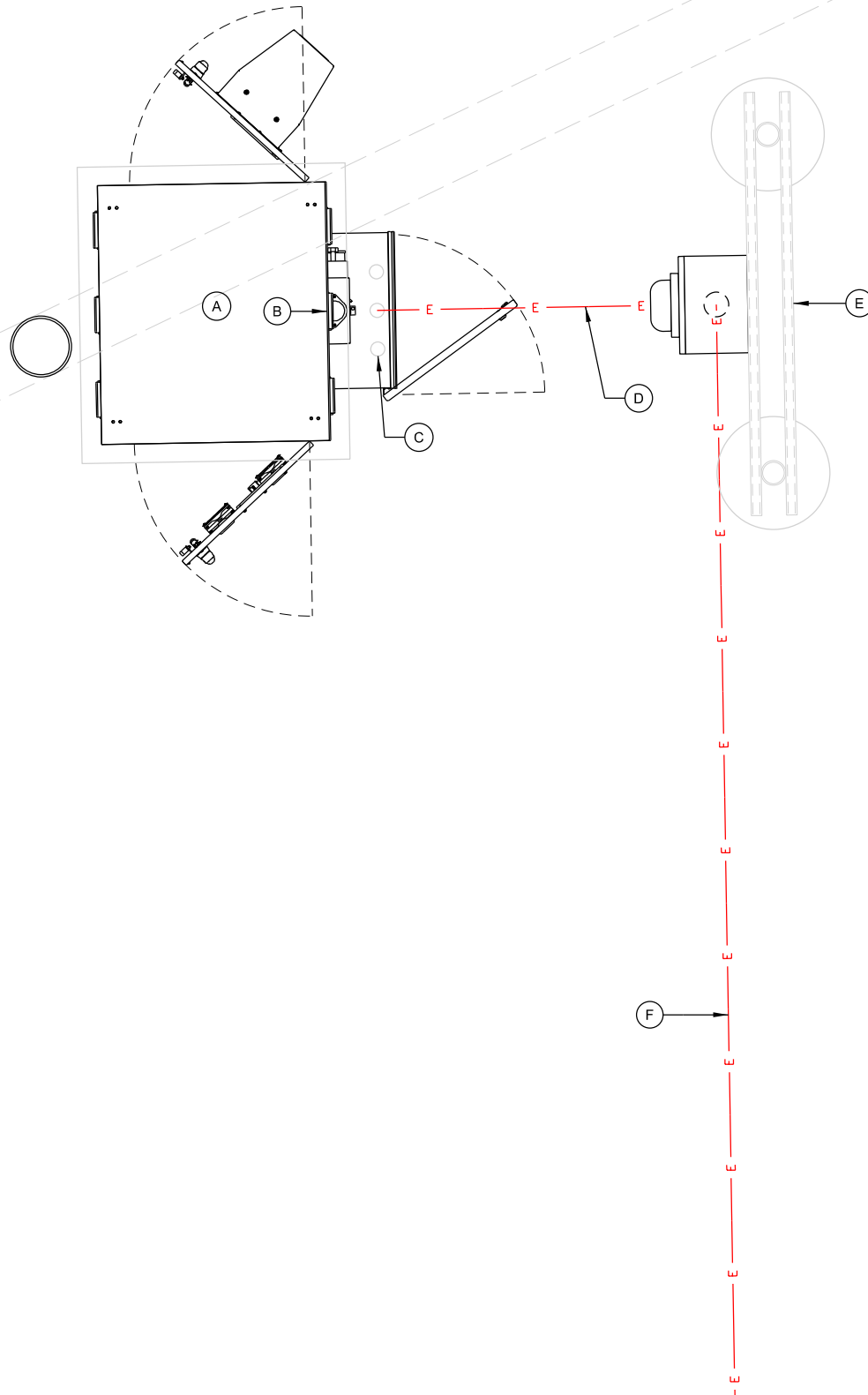


SHEET NUMBER: **E-101**

R:\35200\35241\Design\CAD\FR\PR\PR10E-101.dgn

KEYNOTES: (THIS SHEET)

- A. OUTDOOR RADIO EQUIPMENT CABINET
- B. 8 SLOT 100A LOAD CENTER BUILT INTO RADIO CABINET
- C. UTILITY CONDUIT STUB-UP(S) TO ENTER CABINET THROUGH "UTILITY STUB-UP BOX"
- D. 100A 120/240V 1P ELECTRIC SERVICE TO OUTDOOR EQUIPMENT RADIO CABINET. (1) 1.25" CONDUIT (RNMC) INSTALLED BY CONTRACTOR; COORDINATE INSTALLATION WITH UTILITY PROVIDER
- E. SINGLE ELECTRIC METER UTILITY RACK INSTALLED BY CONTRACTOR; SEE E-505 FOR DETAILS
- F. 100A 120/240V 1P SECONDARY ELECTRIC SERVICE TO SINGLE ELECTRIC METER UTILITY RACK. (1) 1.25" CONDUIT (RNMC); SEE C-101 FOR APPROXIMATE ROUTE; COORDINATE INSTALLATION WITH UTILITY PROVIDER



GENERAL NOTES: (THIS SHEET)

1. CONTRACTOR SHALL FIELD VERIFY DEPTHS, LOCATIONS, & SIZES OF ALL EXISTING UTILITIES.
2. ALL UTILITIES SHALL BE INSTALLED ACCORDING TO STATE AND LOCAL REQUIREMENTS.
3. ALL ELECTRICAL WORK SHALL CONFORM TO NATIONAL, STATE, AND LOCAL CODES.
4. ALL UNDERGROUND TRENCHING, PIPE AND CONDUIT INSTALLATION TO BE COMPLETED PRIOR TO FINAL SUBGRADE COMPACTION AND AGGREGATE INSTALLATION.
5. ALL CONDUCTORS TO BE COPPER.
6. ALL UNDERGROUND ELECTRICAL & TELCO CONDUITS TO BE SCH. 80 PVC UNLESS OTHERWISE REQUIRED BY THE UTILITY PROVIDER.
7. ALL OUTDOOR ABOVE GRADE EXPOSED ELECTRICAL CONDUIT RUNS TO BE RIGID GALVANIZED STEEL (RGS). ALL BELOW GRADE CONDUIT STUB UPS TO BE SCH 80 PVC WITH SLIP JOINT.
8. REFERENCE MANUFACTURER AND CATALOG NUMBERS ARE USED FOR QUALITY AND PERFORMANCE ONLY. EQUIPMENT MFR. BY OTHERS ARE EQUALLY ACCEPTABLE PROVIDED THEY MEET OR EXCEED THE SPEC.
9. PROVIDE AND INSTALL ALL NECESSARY WIRING AND CONDUITS FROM EXTERIOR ELECTRICAL ITEMS TO DISTRIBUTION PANEL WITHIN EQUIPMENT BUILDING.
10. ALL CONDUIT STUBS IN BUILDINGS & PULL BOXES TO BE IDENTIFIED AND LABELED.
11. PROVIDE PULL STRINGS IN ALL CONDUITS.
12. ALL INDOOR EXPOSED CONDUIT TO BE METALLIC (EMT OR RGS). COMPRESSION FITTINGS ARE REQUIRED FOR EMT CONDUITS.
13. SEE E-503 FOR CONDUIT INSTALLATION REQUIREMENTS.

CONSULTANT:



CLIENT:



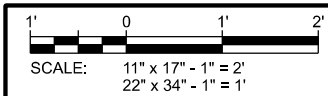
UTILITY PLAN
SUN PRAIRIE POLICE (BIRD STREET WT)
SUN PRAIRIE, WISCONSIN

SUBMITTAL:

INT.	DATE:	DESCRIPTION:

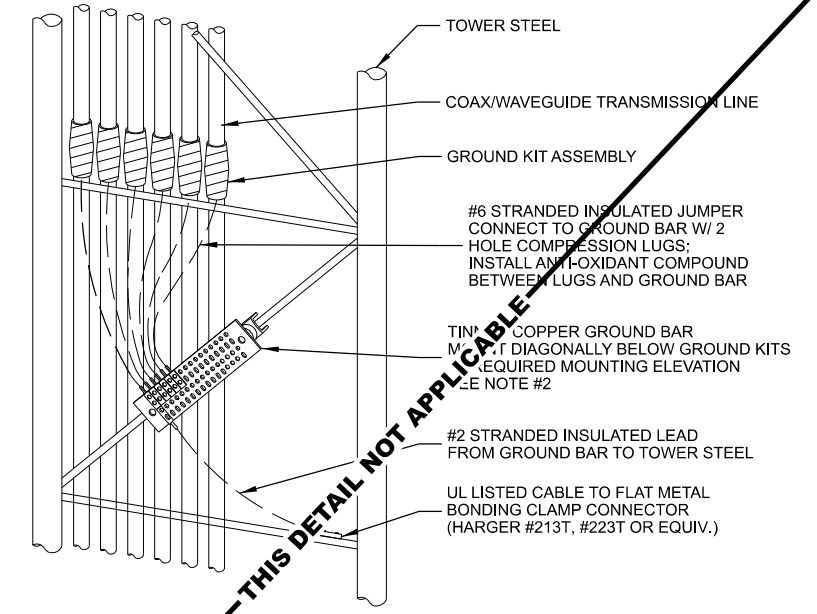
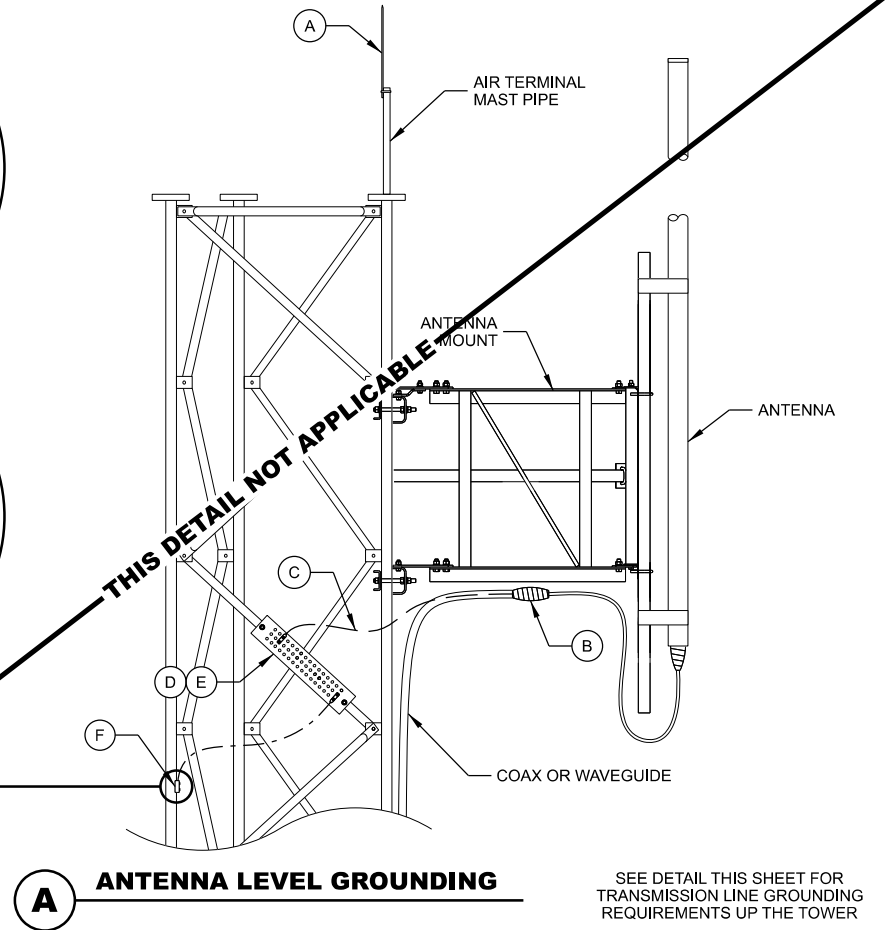
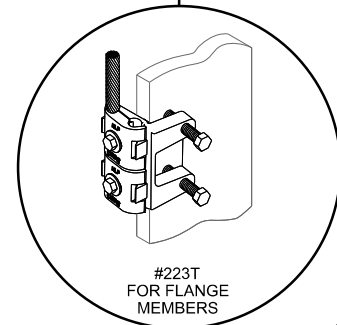
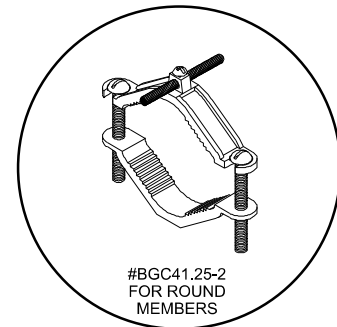
CHECKED BY:	AJO
PLOT DATE:	11/8/2022
PROJECT NUMBER:	35241
SET TYPE:	FR

SHEET NUMBER **E-102**

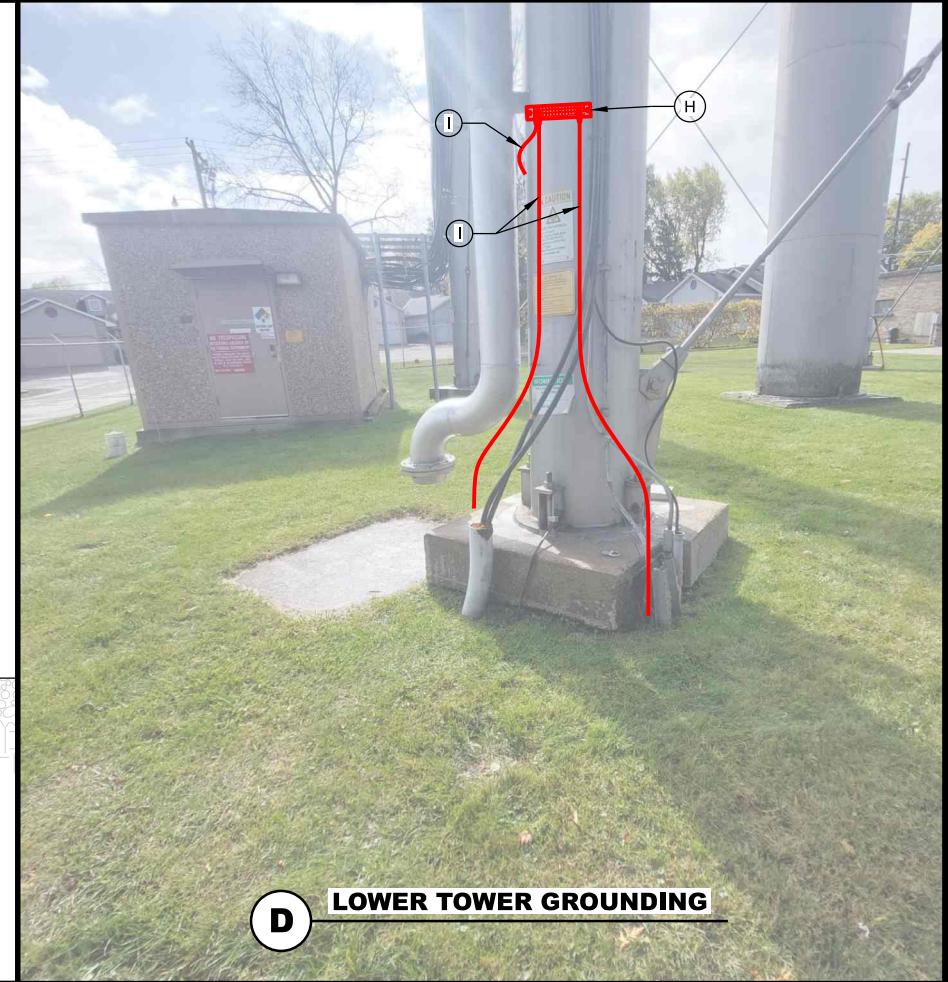
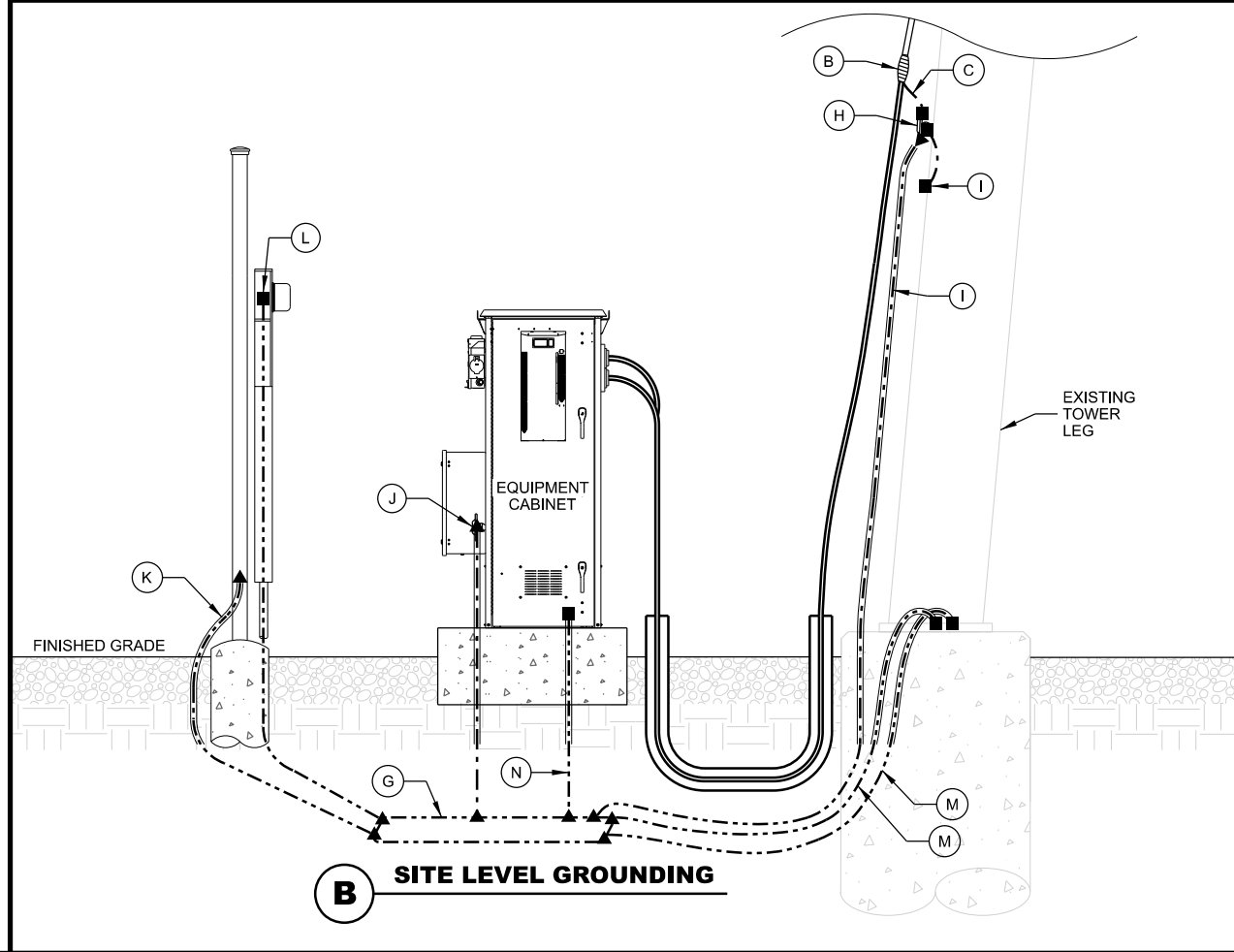


KEYNOTES: (THIS SHEET)

- A. AIR TERMINAL:
EXTEND 2' ABOVE HIGHEST ANTENNA MIN. ON MAST PIPE
MECHANICALLY FASTEN AIR TERMINAL TO MAST PIPE MAST
PIPE TO BE MECHANICALLY CONNECTED TO TOWER STEEL
- B. COAX / WAVEGUIDE TRANSMISSION LINE GROUND KIT;
SEE DETAIL THIS SHEET
- C. GROUND KIT JUMPER;
CONNECT TO GROUND BAR WITH 2 HOLE LONG BARREL LUG
- D. ANTENNA GROUND BAR (TINNED);
FOR CONNECTION OF MULTIPLE GROUND KITS AT ONE
LEVEL MOUNT TO TOWER STEEL;
INSTALL #2 STRANDED LEAD FROM GROUND BAR TO TOWER
STEEL
- E. FOR SINGLE ANTENNAS AT ONE LEVEL OMIT ANTENNA
GROUND BAR CONNECT GROUND KIT JUMPER DIRECTLY TO
TOWER STEEL WITH UL LISTED BONDING CLAMP
- F. UL LISTED BONDING CLAMP:
- HARGER BGC41.25-2 PIPE CLAMPS FOR
1-1/4" TO 2" DIA. ROUND MEMBERS
OR
- HARGER #223T HEAVY DUTY TINNED FLANGE
BONDING PLATE
- USE EXTERNAL ANTI-OXIDATION COMPOUND.
- PAINT WITH COLD GALV. COMPOUND AFTER BONDING.
- G. EQUIPMENT GROUND RING:
MAINTAIN 2' SEPARATION FROM PAD FOUNDATION;
#2 BARE SOLID TINNED
- H. LOWER TOWER GROUND RF BAR (TGB) (TINNED);
4" x 18" x 1/4" - SIZED FOR (30) 2 HOLE GROUND LUGS MOUNT
DIAGONALLY FOR EASIER HOOK-UP OF GROUNDING KIT
LEADS INSTALL ON TOWER WITH INSULATORS AT 12" (ABOVE
ICE BRIDGE)
- I. LOWER TGB GROUNDS;
#2 BARE SOLID TINNED ENCASED IN CARFLEX CONDUIT
FROM LOWER TGB TO EQUIPMENT GROUND RING (2) REQ'D
AND FROM LOWER TGB TO TOWER STEEL (1) REQ'D;
CONDUIT TO BE SUPPORTED EVERY +/- 30-INCHES TO
GRADE. SUPPORT ALONG TOWER LEG WITH COAX SNAP-IN
HANGERS OR ANGLE ADAPTERS CONNECTED TO TOWER
STEEL.
- J. INTERIOR RADIO CABINET GROUND BAR (MGB);
(1) LEAD TO EQUIPMENT GROUND RING
- K. UTILITY RACK POST GROUND;
#2 BARE SOLID TINNED ENCASE IN CARFLEX CONDUIT
TO 24" BELOW GRADE;
SEE E-502 FOR DETAILS
- L. A/C METER BOX GROUND
- M. EQUIPMENT GROUND RING TO TOWER STEEL;
(2) LEADS
- N. RADIO CABINET ENCLOSURE GROUND, (1) LEAD



- NOTES:
- INSTALL GROUND KITS ON EACH TRANSMISSION LINE IN THE FOLLOWING LOCATIONS:
 - A. ANTENNA / DISH LEVEL
 - B. AT 75 FOOT MAX INTERVALS FROM ANTENNA LEVEL TO BASE OF TOWER
 - C. TOWER BASE
 - D. EQUIPMENT BUILDING ENTRY
 - INSTALL ANTENNA GROUND BARS AT EACH ANTENNA TIER LEVEL FOR CONNECTION OF MULTIPLE ANTENNAS AT EACH LEVEL. WHEN ONLY ONE ANTENNA IS INSTALLED AT A LEVEL, CONNECT GROUND KIT DIRECTLY TO TOWER STEEL WITH UL LISTED BONDING CLAMP.



CONSULTANT:
Edge
Consulting Engineers, Inc.
624 WATER STREET
PRAIRIE DU SAC, WI 53578
608.644.1449 VOICE
608.644.1549 FAX
www.edgeconsult.com

CLIENT:
GENCOMM

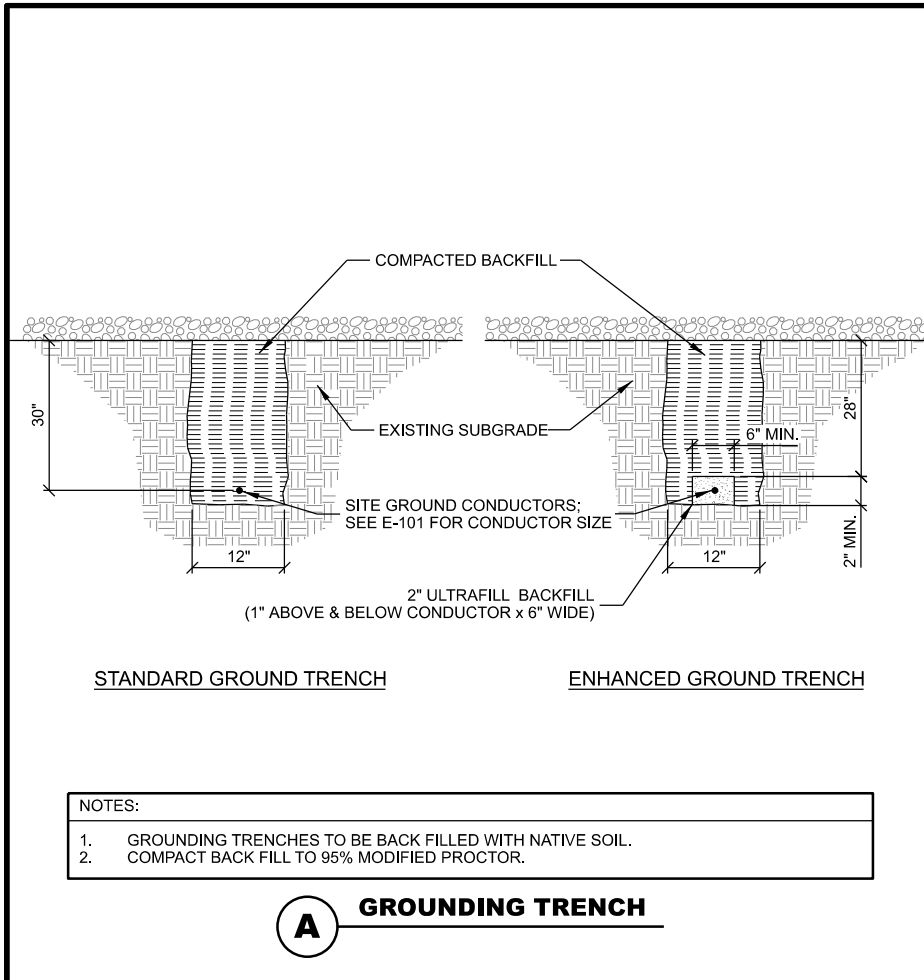
**GROUNDING DETAILS
SUN PRAIRIE POLICE (BIRD STREET WT)
SUN PRAIRIE, WISCONSIN**

SUBMITTAL:

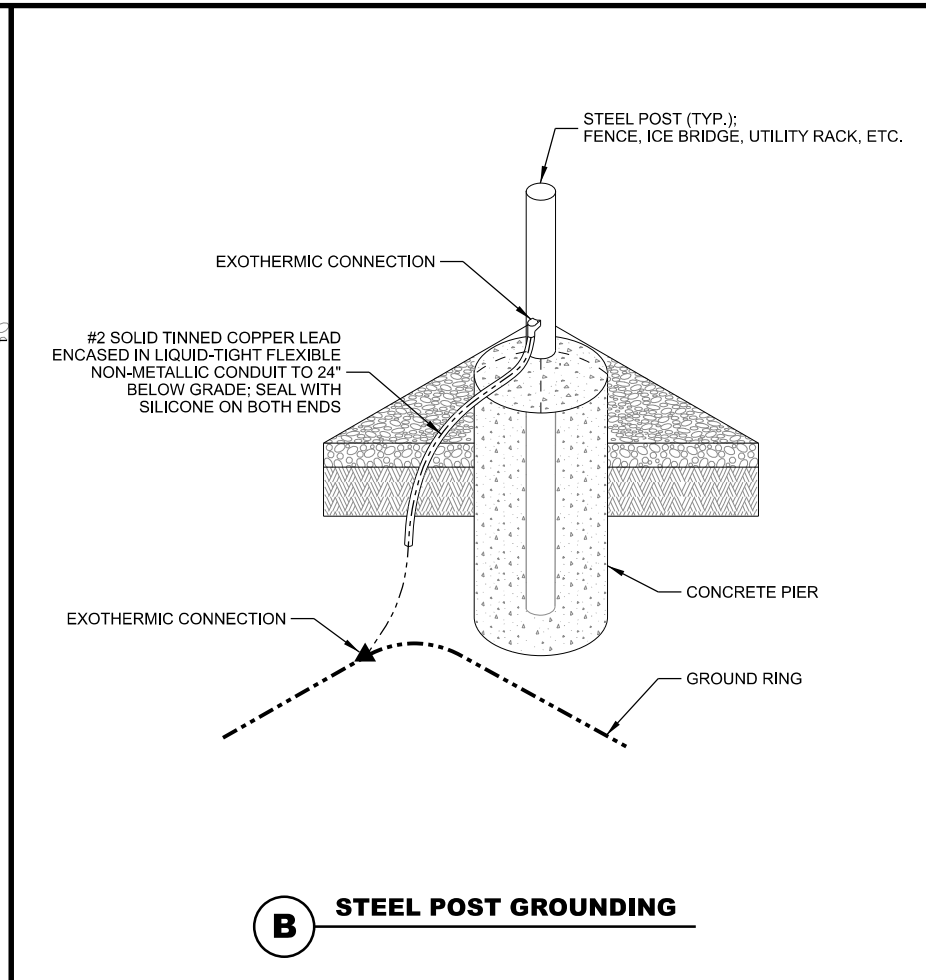
INT.	DATE:	DESCRIPTION:

CHECKED BY:	AJO
PLOT DATE:	11/8/2022
PROJECT NUMBER:	35241
SET TYPE:	FR
SHEET NUMBER:	E-501

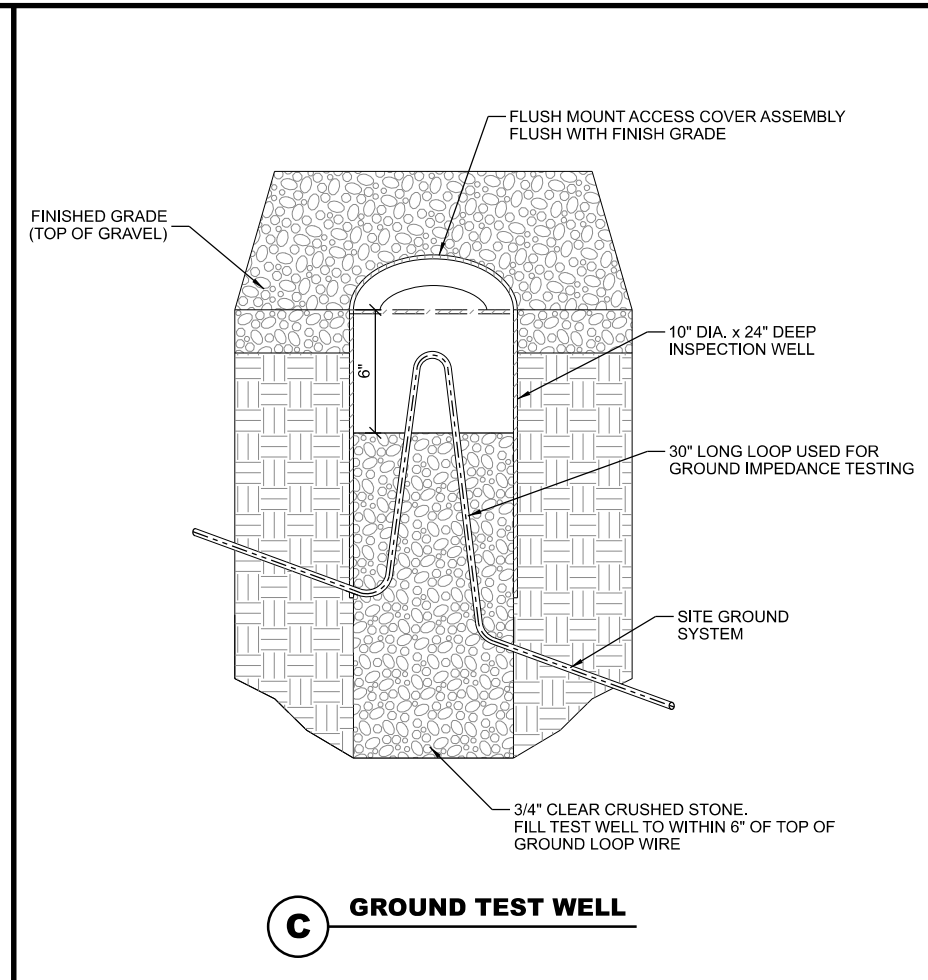
I:\35200\35241\Design\CAD\FR\PlateE-501.dgn



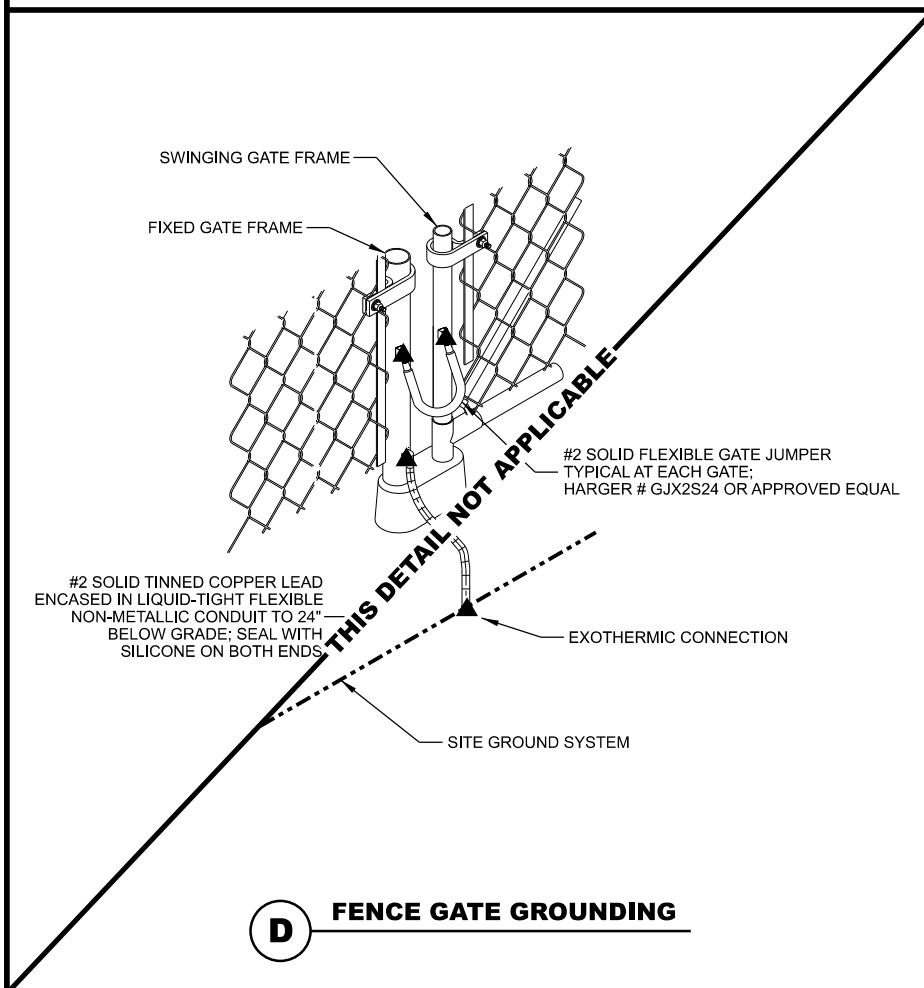
A GROUNDING TRENCH



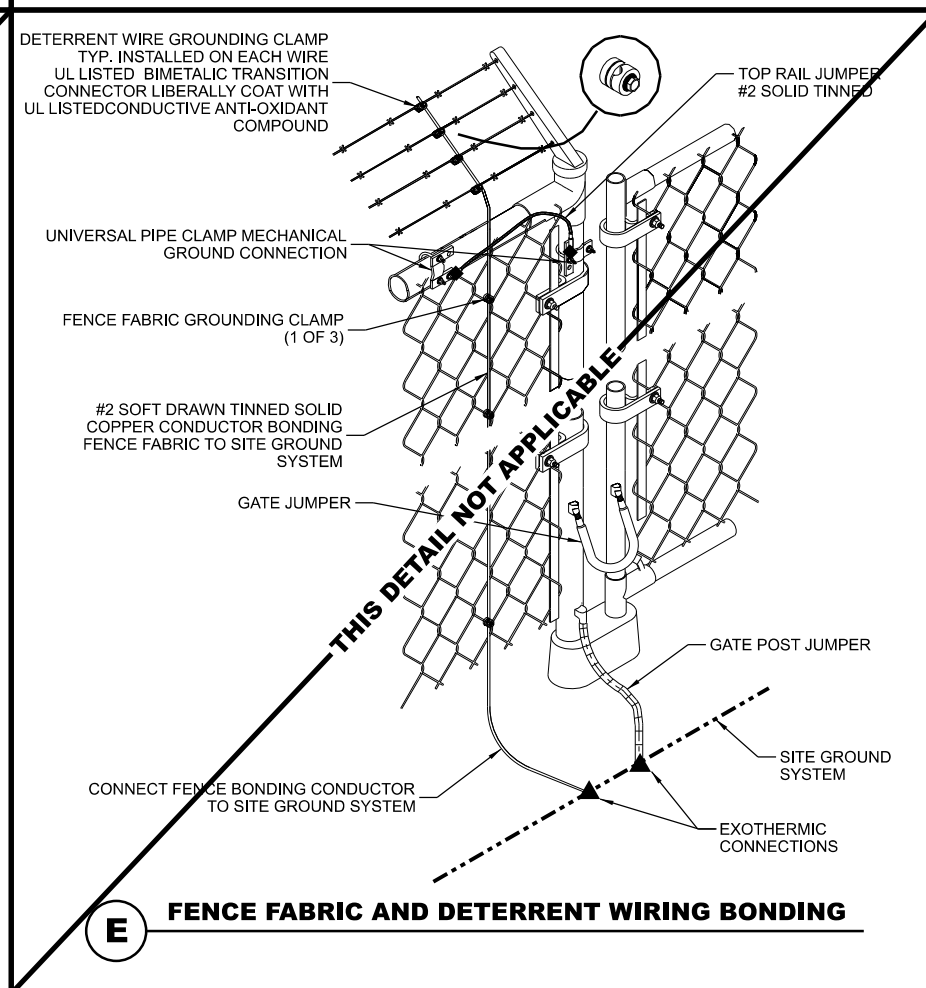
B STEEL POST GROUNDING



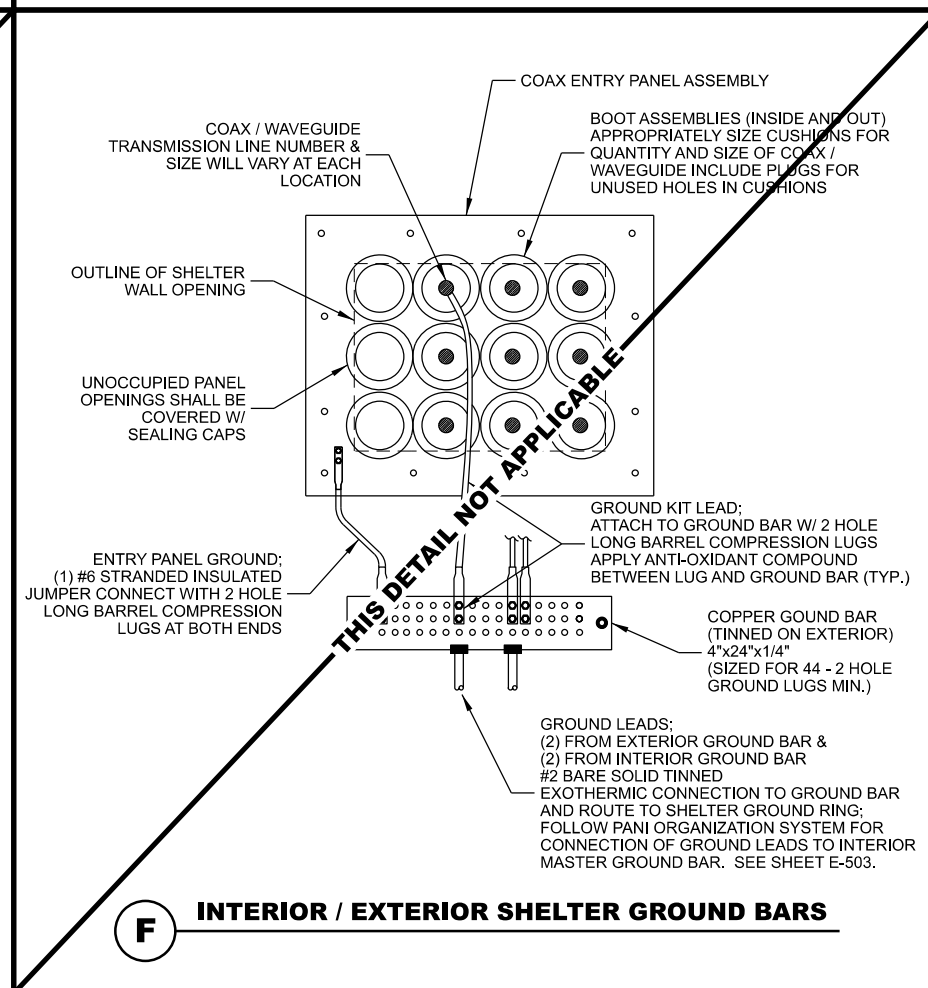
C GROUND TEST WELL



D FENCE GATE GROUNDING



E FENCE FABRIC AND DETERRENT WIRING BONDING



F INTERIOR / EXTERIOR SHELTER GROUND BARS

CONSULTANT:
Edge
 Consulting Engineers, Inc.
 624 WATER STREET
 PRAIRIE DU SAC, WI 53578
 608.644.1449 VOICE
 608.644.1549 FAX
 www.edgeconsult.com

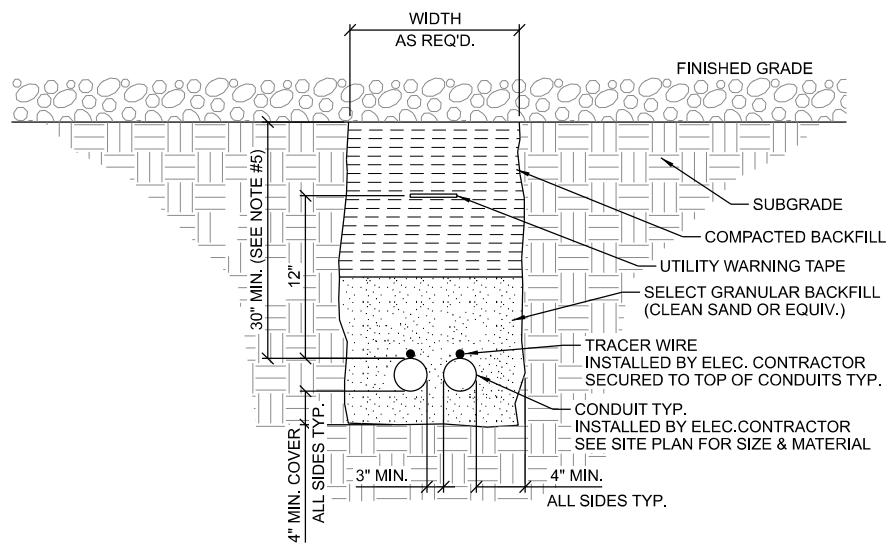
CLIENT:
GENCOMM

GROUNDING DETAILS
SUN PRAIRIE POLICE (BIRD STREET WT)
SUN PRAIRIE, WISCONSIN

SUBMITTAL:

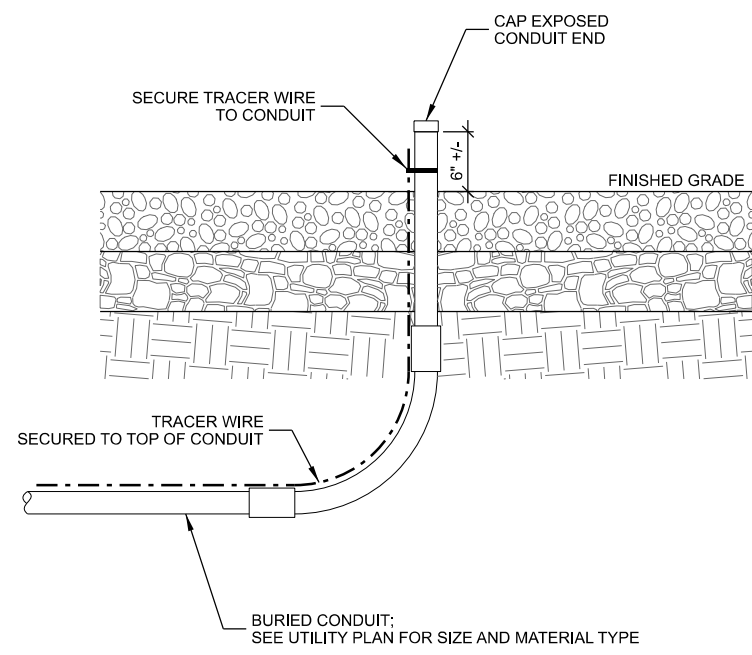
INT.	DATE:	DESCRIPTION:

CHECKED BY:	AJO
PLOT DATE:	11/8/2022
PROJECT NUMBER:	35241
SET TYPE:	FR
SHEET NUMBER:	E-502

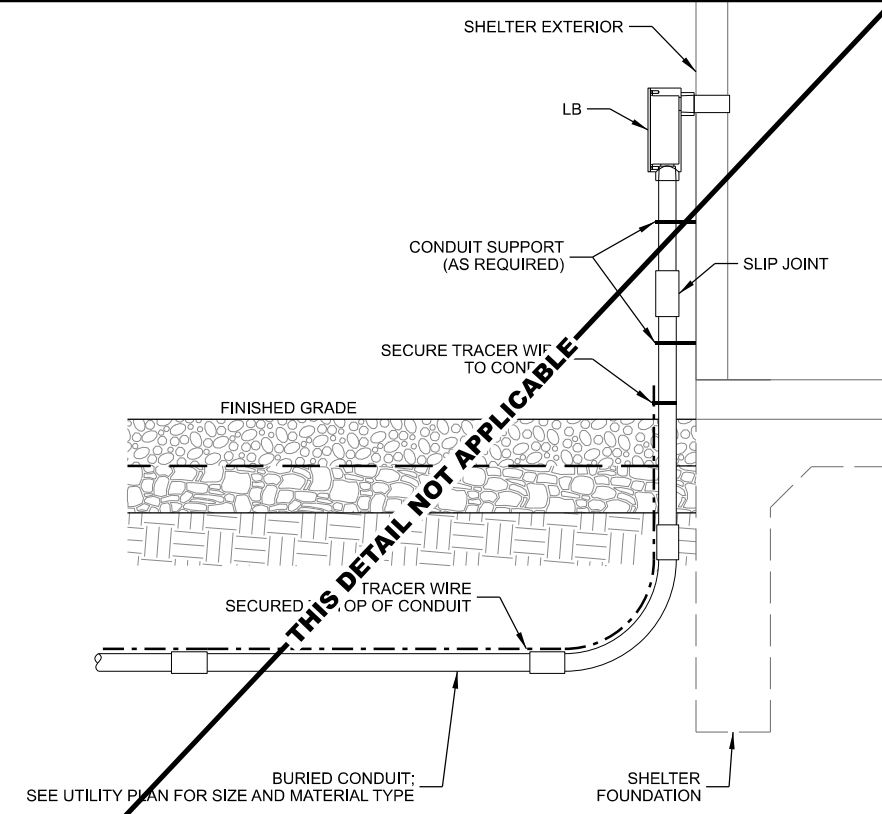


- NOTES:
1. ALL CONDUITS TO BE EQUIPPED W/ PULL CORDS & CAPPED FOR FUTURE LINE PULLS. NO DUCT TAPE CAPS ALLOWED
 2. WARNING TAPE TO RUN CONTINUOUSLY ALONG THE ENTIRE CONDUIT LENGTH. INSTALL TAPE 12" ABOVE THE TOP OF THE CONDUITS.
 3. TRACER WIRE TO BE 14 GA. SOLID COPPER WIRE WITH CORROSION PROTECTIVE COATING. SECURE TO TOP OF CONDUIT AND RUN CONTINUOUSLY ALONG THE ENTIRE LENGTH. EXTEND TO GRADE AT BOTH ENDS - LOOP AND WRAP AROUND APPROPRIATE CONDUIT.
 4. CONTRACTOR TO CHECK CONTINUITY OF TRACER WIRE BEFORE AND AFTER BURIAL.
 5. VERIFY CONDUIT DEPTH REQUIREMENTS WITH LOCAL UTILITY PROVIDER.

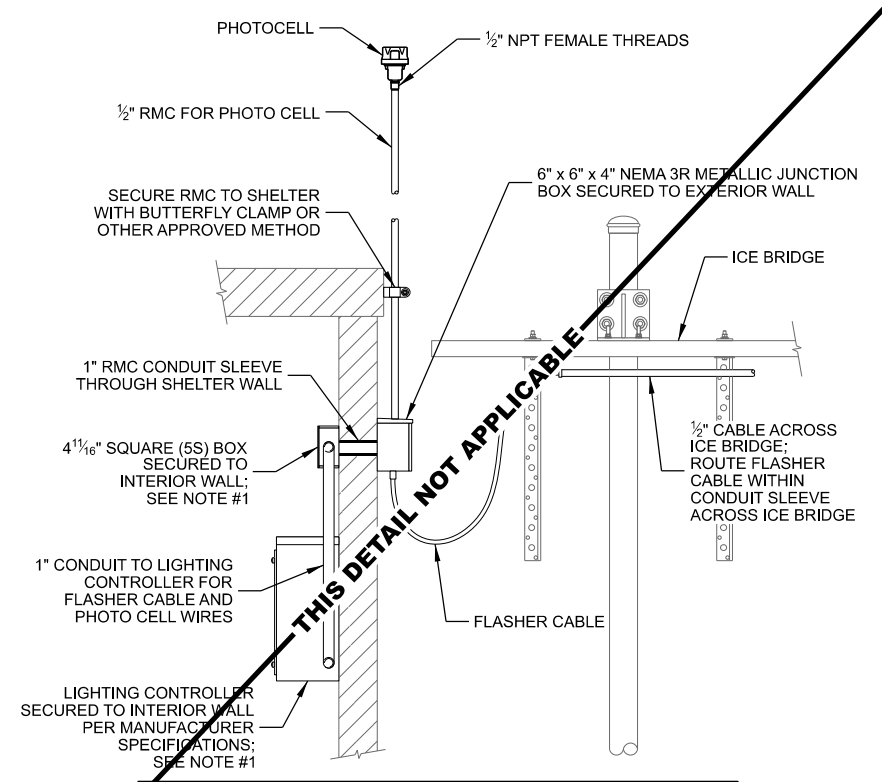
A UTILITY TRENCH



B CONDUIT STUB-UP



C CONDUIT STUB-UP AT SHELTER



- NOTES:
1. PROVIDE GROUND BOND FROM LIGHTING CONTROLLER BOX AND INTERIOR JUNCTION BOX TO INTERIOR GROUND HALO SYSTEM.

D TOWER LIGHTING INSTALLATION

THIS SPACE INTENTIONALLY LEFT BLANK

CONSULTANT:
Edge
 Consulting Engineers, Inc.
 624 WATER STREET
 PRAIRIE DU SAC, WI 53578
 608.644.1449 VOICE
 608.644.1549 FAX
 www.edgeconsult.com

CLIENT:
GENCOMM

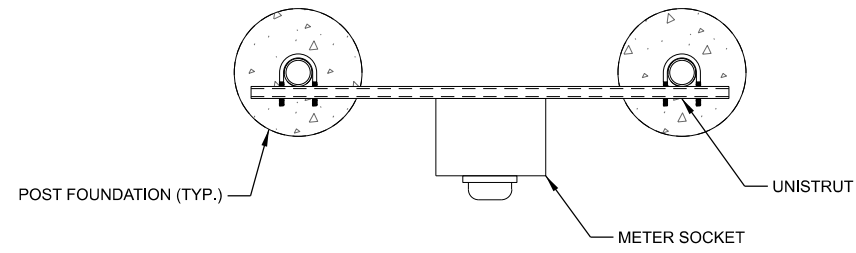
UTILITY DETAILS
SUN PRAIRIE POLICE (BIRD STREET WT)
SUN PRAIRIE, WISCONSIN

SUBMITTAL:

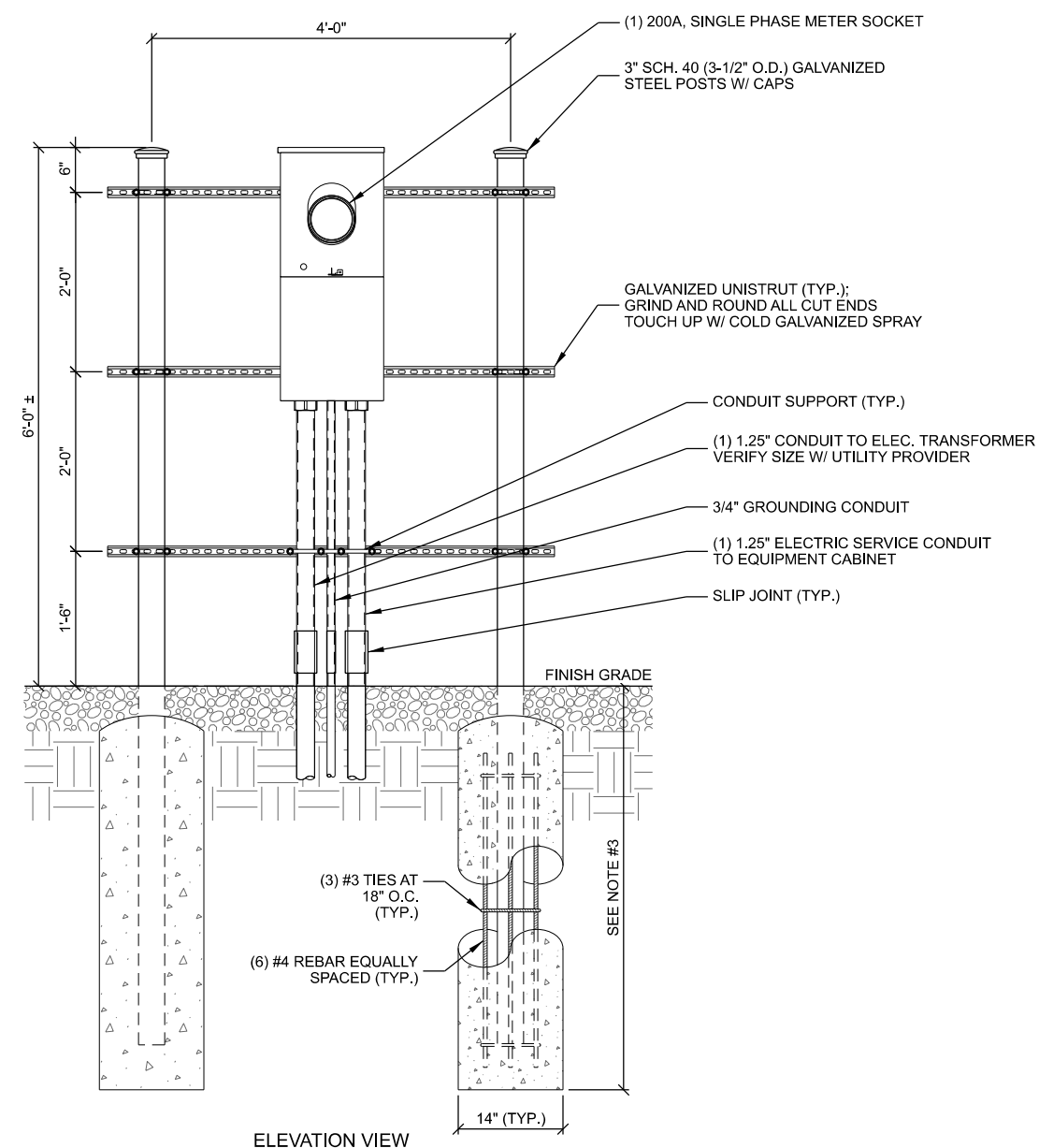
INT.	DATE:	DESCRIPTION:

CHECKED BY:	AJO
PLOT DATE:	11/8/2022
PROJECT NUMBER:	35241
SET TYPE:	FR
SHEET NUMBER:	E-504

R:\35200\35241\Design\CAD\FR\PlateE-504.dgn



PLAN VIEW



ELEVATION VIEW

- NOTES:
1. CONCRETE FOR PIER TO BE A MINIMUM OF 4,000 PSI AT 28 DAYS.
 2. MAINTAIN 3" MINIMUM REBAR COVER IN ALL DIRECTIONS.
 3. PIER FOUNDATION DEPTH TO BE A MINIMUM OF 48"; DEPTH TO EXCEED LOCAL FROST DEPTH.

A SINGLE METER UTILITY RACK
 SCALE: 11" x 17" - 1/2" = 1'-0"
 22" x 34" - 1" = 1'-0"

CONSULTANT:
Edge
 Consulting Engineers, Inc.
 624 WATER STREET
 PRAIRIE DU SAC, WI 53578
 608.644.1449 VOICE
 608.644.1549 FAX
 www.edgeconsult.com

CLIENT:
GENCOMM

UTILITY RACK DETAILS
SUN PRAIRIE POLICE (BIRD STREET WT)
SUN PRAIRIE, WISCONSIN

SUBMITTAL:		
INT.	DATE:	DESCRIPTION:

CHECKED BY:	AJO
PLOT DATE:	11/8/2022
PROJECT NUMBER:	35241
SET TYPE:	FR
SHEET NUMBER:	E-505

I:\35200\35241\Design\CAD\FR\PIE-E-505.dgn