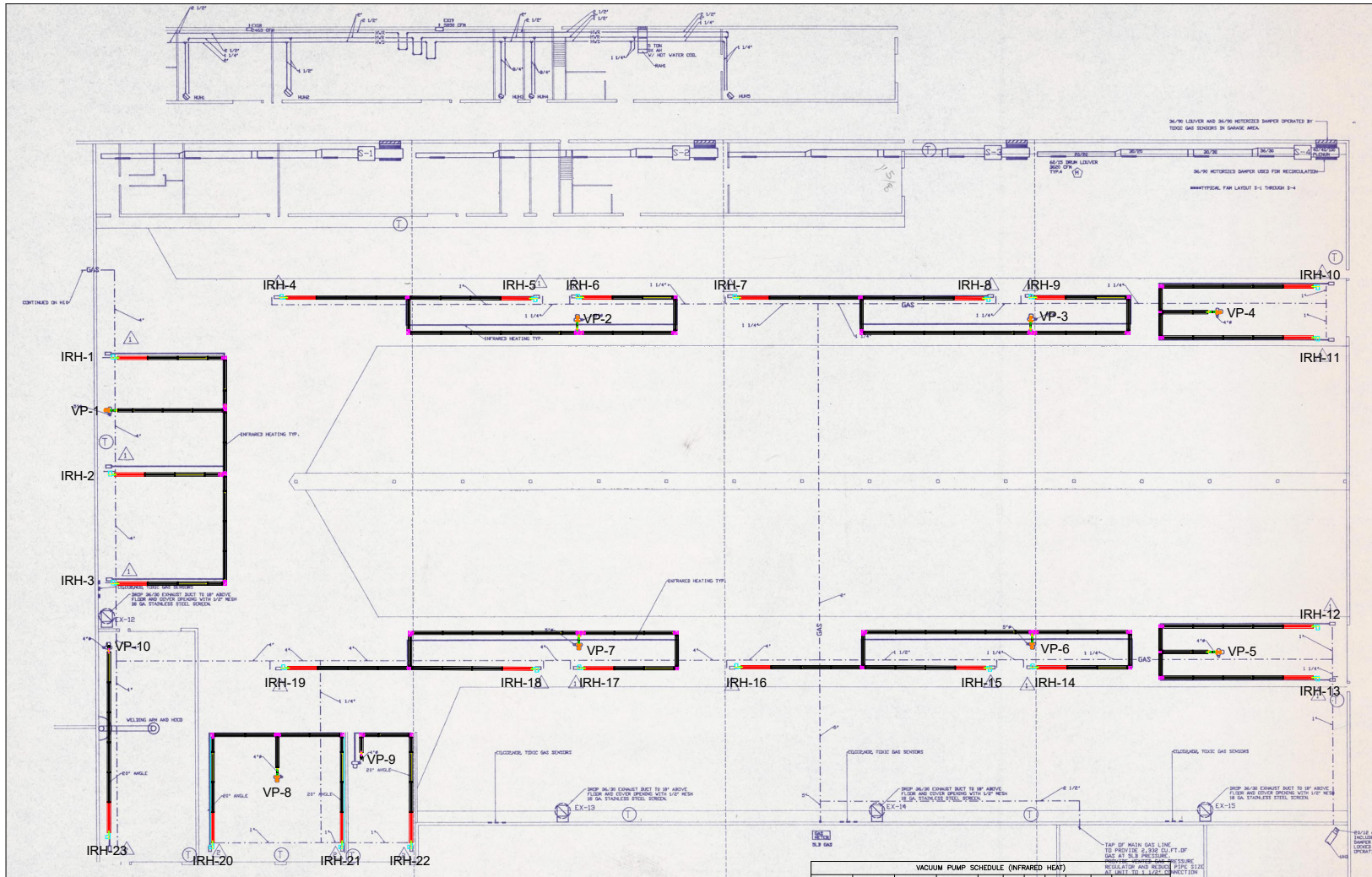


Scale: 1/16" = 1'-0"
(When printed on 24x36)



*NOTE: All pipe sections, when assembled, utilize a 4" overlap at their connection points. Pipe sections may require field cuts to match exact design. When field cuts are required, remove excess material from non-welded end.

- REP = Radiant Tube Elbow + Reflector
- V-TTS = (1) V-TERI + (1) V-DIKT + (1) REP
- V-TERI = Vacuum In-Line Tee w/ Reflector
- V-DIKT = Vacuum Damper w/ Reflector

BURNER HEAD and 10' Titanium (COMBUSTION) Tube.
Titanium Tube MUST be the first tube after the burner.

- BLACK = 10' Aluminized Steel
- BLACK+ TR60 (5' Aluminized Steel)
- GREEN = 10' Stainless Steel
- GREEN+ STP-60 (5' Stainless Steel)
- VP = Vacuum Pump

TAG	LOCATION	OUTPUT RATING W/20% MARGIN	TOTAL SYSTEM HP RANGE	EDGE INCHES	PHASE	HP	AMPS	RPM	HZ	REMARKS
VP-1-7	VEHICLE STORAGE	PBBA-1PH	280-545	120	1	.75	9,600	3450	60	SEE NOTES
VP-8-10	VEHICLE STORAGE	NC-7A	40-150	120	1	1.067	1,895	3000	60	Connect to DWP SV unit
VP-8	VEHICLE STORAGE	PBBA-1PH	60-275	120	1	.50	7,400	3450	60	SEE NOTES

NOTES:
 1. REFER TO SPECIFICATIONS, DETAILS, AND CONTROL DRAWINGS FOR ADDITIONAL INFORMATION.
 2. PUMPS COMPLETE WITH PRIMARY DAMPER, ISOLATION BOOTS (ONLY FOR NC-7), VIBRATION ISOLATORS (ONLY FOR NC-7) AND PUMP PANEL.
 3. PROVIDE 4" NORTH-HEED INDICATOR.

TAG	LOCATION	OUTPUT RATING W/20% MARGIN	SIZE (INCH)	SIZE LENGTH	BURNER TUBE MATERIAL	FLUE TYPE	V	PH	HZ	FLA	REMARKS
IRH-1-18	VEHICLE STORAGE	16V-150/150	125	VARIABLES	4" ALUMINIZED STEEL	DA	130	1	60	0.7	SEE NOTES
IRH-20-21	VEHICLE STORAGE	16V-150/150	125	VARIABLES	4" ALUMINIZED STEEL	DA	130	1	60	0.7	SEE NOTES
IRH-22	VEHICLE STORAGE	16V-150/150	125	VARIABLES	4" ALUMINIZED STEEL	DA	130	1	60	0.7	SEE NOTES
IRH-22	VEHICLE STORAGE	16V-150/150	125	VARIABLES	4" ALUMINIZED STEEL	DA	130	1	60	0.7	SEE NOTES

NOTES:
 1. REFER TO SPECIFICATIONS, DETAILS, AND CONTROL DRAWINGS FOR ADDITIONAL INFORMATION.
 2. VERIFY TUBE LENGTH IN FIELD PRIOR TO ORDERING.
 3. BURNER COMPLETE WITH PRESSURE ALUMINUM REFLECTORS, SPARGED TUBES, STAINLESS STEEL BURNER, BEARING CABLES, AND FLEXIBLE GAS CONNECTIONS.
 4. ADVISE AS MUCH AS POSSIBLE PER MANUFACTURER'S RECOMMENDATION.
 5. CONTACT MARK NICHOLS - APPROX LOW FOR PHONE: 413.251.7728

Detroit Radiant Products Co.
 21400 Hoover Rd. Warren, MI 48089
 586.756.0950 Fax: 586.756.2626

**KCC IR REPLACEMENT
VEHICLE STORAGE
PROJECT LOCATION:**

© 2023 Detroit Radiant Products Co.

Please review this drawing carefully and contact your representative with questions. Detroit Radiant will not be held liable for misinterpretations.

REVISED BY:	DATE
XXX	XXX
XXX	XXX
XXX	XXX
XXX	XXX
XXX	XXX
XXX	XXX
XXX	XXX
XXX	XXX
XXX	XXX
XXX	XXX
XXX	XXX
XXX	XXX
XXX	XXX
XXX	XXX

REP FIRM: XXX
 DRAWN BY: XXX
 DATE: XXX
 SHEET NO.