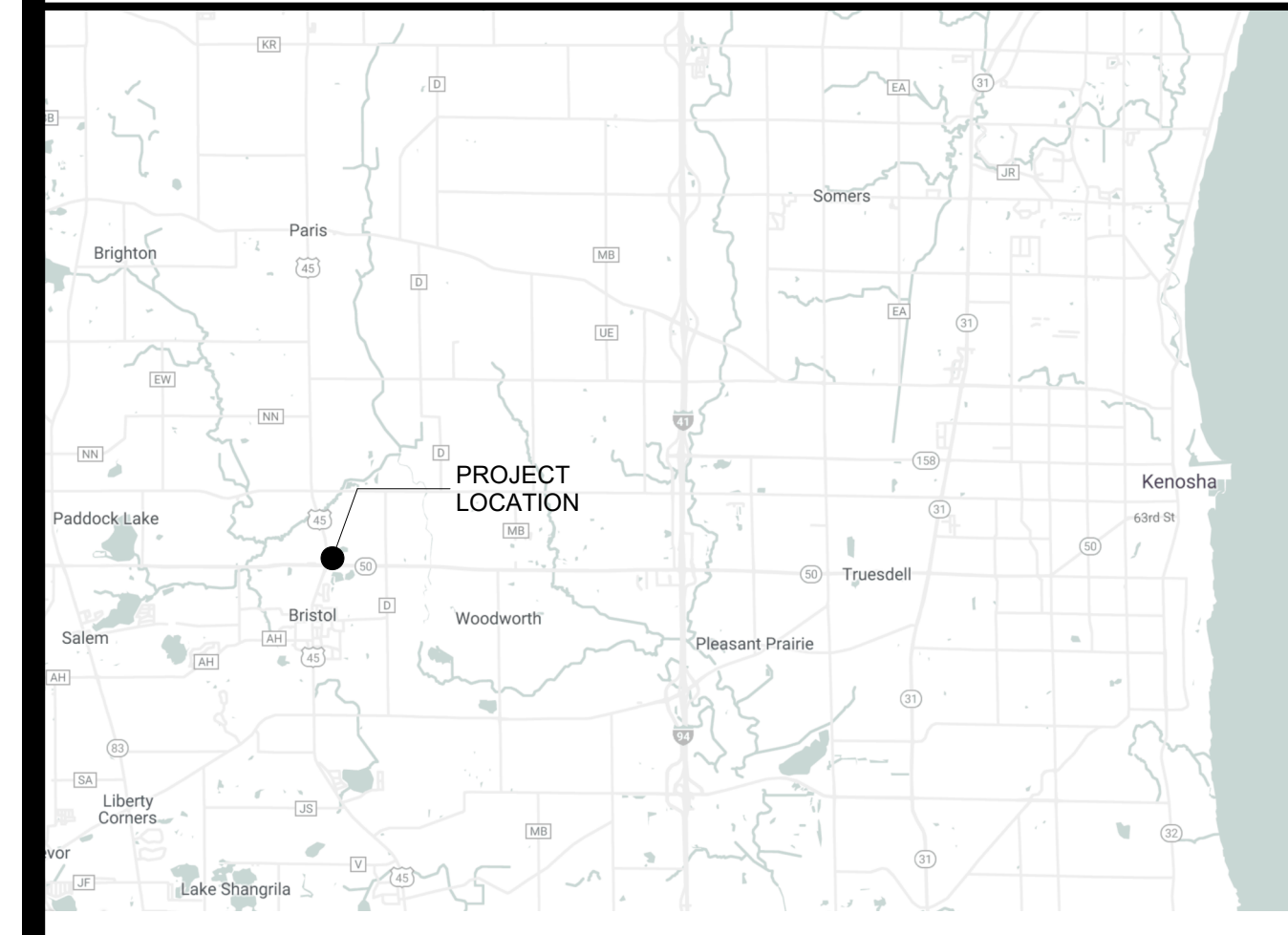


**SITE MAP**



**GENERAL NOTES**

1. All concrete to test 4000 psi in 28 days.
2. Verify all dimensions, access, utilities and working conditions in the field.
3. Conform to all applicable codes, ordinances and safety standards.
4. Obtain and pay for all required permits and fees.
5. Notify Architect immediately if work cannot proceed as shown on Drawings or as described in the Specifications.
6. No concrete to be poured without Architect's prior review.
7. All Contractor's to co-operate with all trades, Owner's and Architect's representatives.
8. Leave site clean, neat and free of debris at all times.
9. Each Prime and Sub-contractor is responsible for having read each page of the Specifications, Drawings, Addenda and Change Orders.
10. Guard against interfering with Owner's operations.
11. These Drawings contain no provisions or procedures for on-site safety. Each Contractor and their employees are responsible to follow all laws and ordinances and provide their own engineering to provide a safe work place.
12. The locations of existing underground utilities, shown on these Drawings, are shown in an approximate way only and have not been independently verified by the Owner or its representatives. The Contractor shall determine the exact location of all existing utilities before commencing work, and agrees to be fully responsible for any and all damages which might be occasioned by the Contractor's failure to exactly locate and preserve any and all underground utilities.
13. Services perform for this project have been conducted in a manner consistent with the level of care and skill ordinarily exercised by members of the profession currently practicing in this area under similar budget and time constraints. No warranty, expressed or implied, is made.

**MATERIAL INDICATIONS**

Earth Backfill		Sand Fill	
Rigid Insulation		Concrete	
Concrete Block		Finished Wood	
Aluminum		Stone Fill	
Lumber (Rough)		Plywood	
Steel		Batt Insulation	

**DRAWING LEGEND**

+ 100.0	New or Required Point Elevation		Detail Number
+ 100.0	Existing Point Elevation		Page Number
+ 100.0	Existing Contours		Building Section
+ 100.0	New or Required Contours		Wall Section
A	Grid Lines		Detail Section
Room 1	Space Number		Interior Elevation
10	Door Number		Exterior Elevation
1	Wall Tag		

**CONSULTANTS**

ARCHITECT	<b>Kueny Architects</b> (262) 857-8101 Architect of Record - Jon P. Wallenkamp	10505 Corporate Drive, Suite 100 Pleasant Prairie, Wisconsin 53158
ELECTRICAL	Root Engineering Services (847) 249-8398 Engineer of Record - Richard Root	10411 Corporate Drive, Suite 108 Pleasant Prairie, Wisconsin 53158

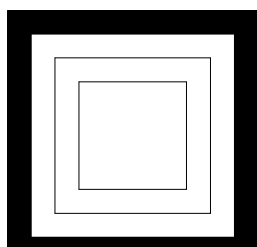
**SHEET INDEX**

01	Title Sheet
ARCHITECTURAL	
A100	Site Plan - Demo Plan
ELECTRICAL	
E1	Electrical Site Plan
E2	Electrical Plans
E3	Electrical Schedules, Notes and Details
E4	Electrical Schedules, Notes and Details

# Kenosha County Center

## Generator Installation

**19600 75th Street**  
**Bristol, WI 53104**



**KUENY ARCHITECTS, LLC**

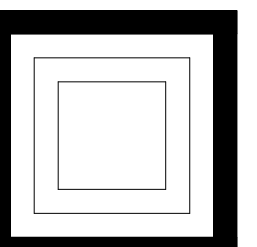
10505 CORPORATE DRIVE - SUITE 100 PLEASANT PRAIRIE, WI 53158

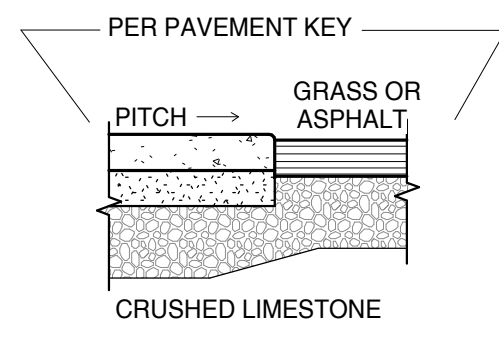
PHONE (262) 857-8101 FAX (262) 857 8103

**Kenosha County Center**  
**Generator Installation**

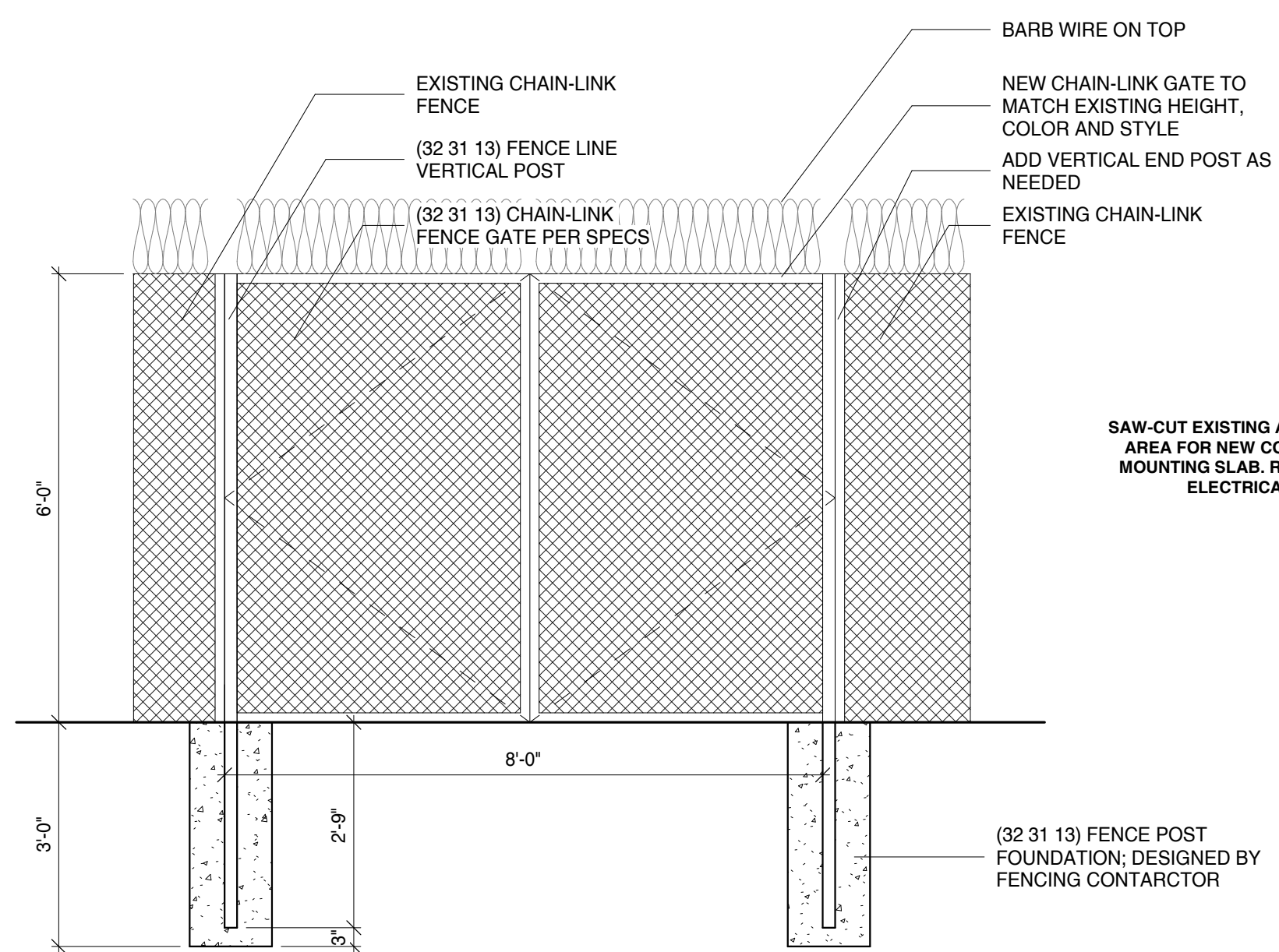
May 31, 2023

**1.0**





**2 Typ. Site Edges - Asphalt @ Concrete**



**3 Fence Detail - Standard**  
1/2" = 1'-0"

SAW-CUT CONCRETE SIDEWALL FOR NEW ELECTRIC PIPING INSTALLATION. SEE ELECTRIC PLANS. PATCH CONCRETE AS NEEDED TO MATCH EXISTING.

UNDERGROUND PIPE. ELECTRICAL CONTRACTOR TO TRENCH FOR NEW PIPE AS NOTED ON ELECTRICAL PLANS. RESTORE AND RE-SEED ALL DISTURBED GRASS AREAS.

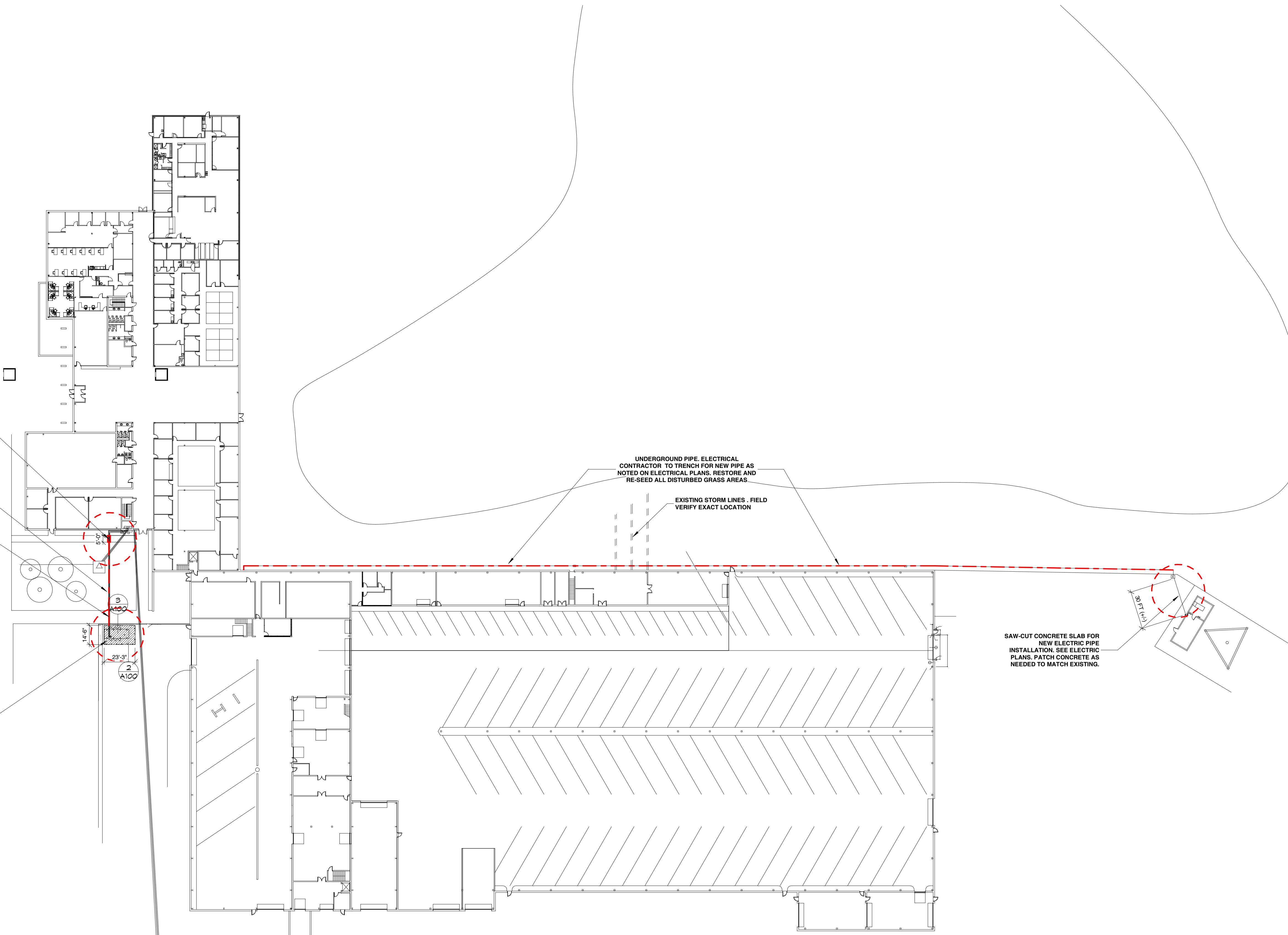
SAW-CUT CONCRETE SIDEWALL FOR NEW ELECTRIC PIPING INSTALLATION. SEE ELECTRIC PLANS. PATCH CONCRETE AS NEEDED TO MATCH EXISTING.

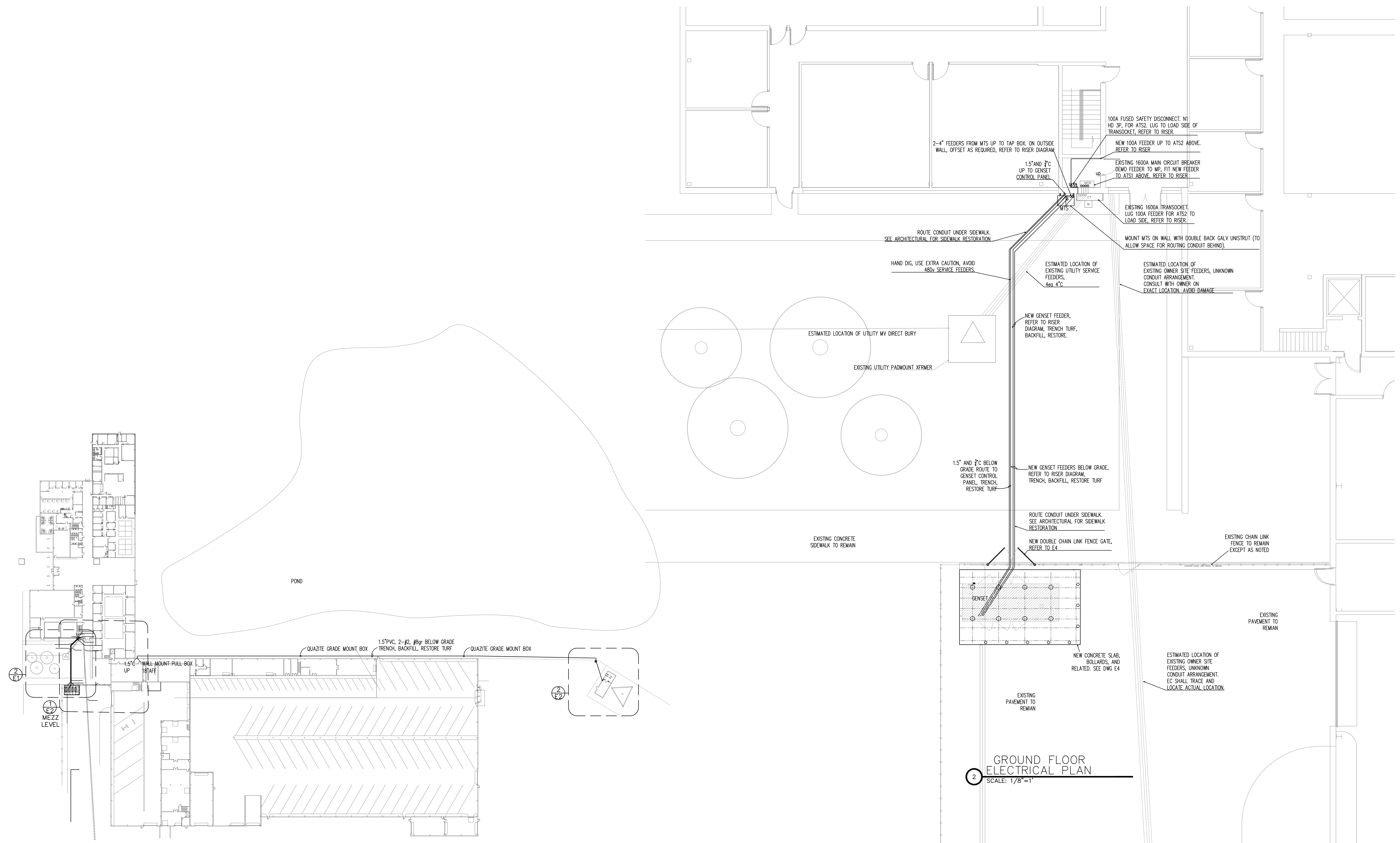
BARB WIRE ON TOP  
NEW CHAIN-LINK GATE TO MATCH EXISTING HEIGHT, COLOR AND STYLE  
ADD VERTICAL END POST AS NEEDED  
EXISTING CHAIN-LINK FENCE

SAW-CUT EXISTING ASPHALT AREA FOR NEW CONCRETE MOUNTING SLAB. REFER TO ELECTRICAL PLANS

(32 31 13) FENCE POST FOUNDATION: DESIGNED BY FENCING CONTRACTOR

**1 Site & Demo Plan**  
1" = 40'-0"

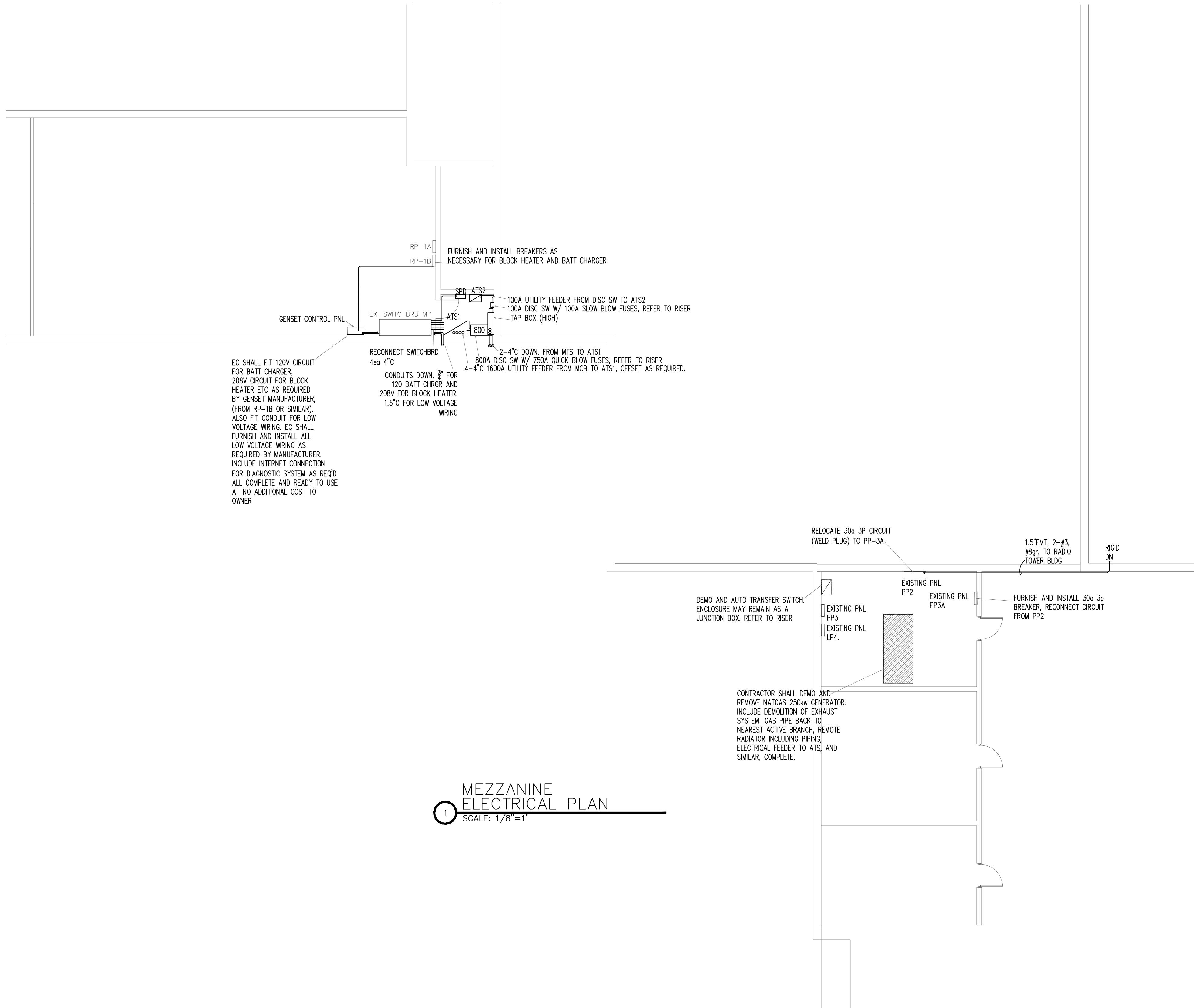




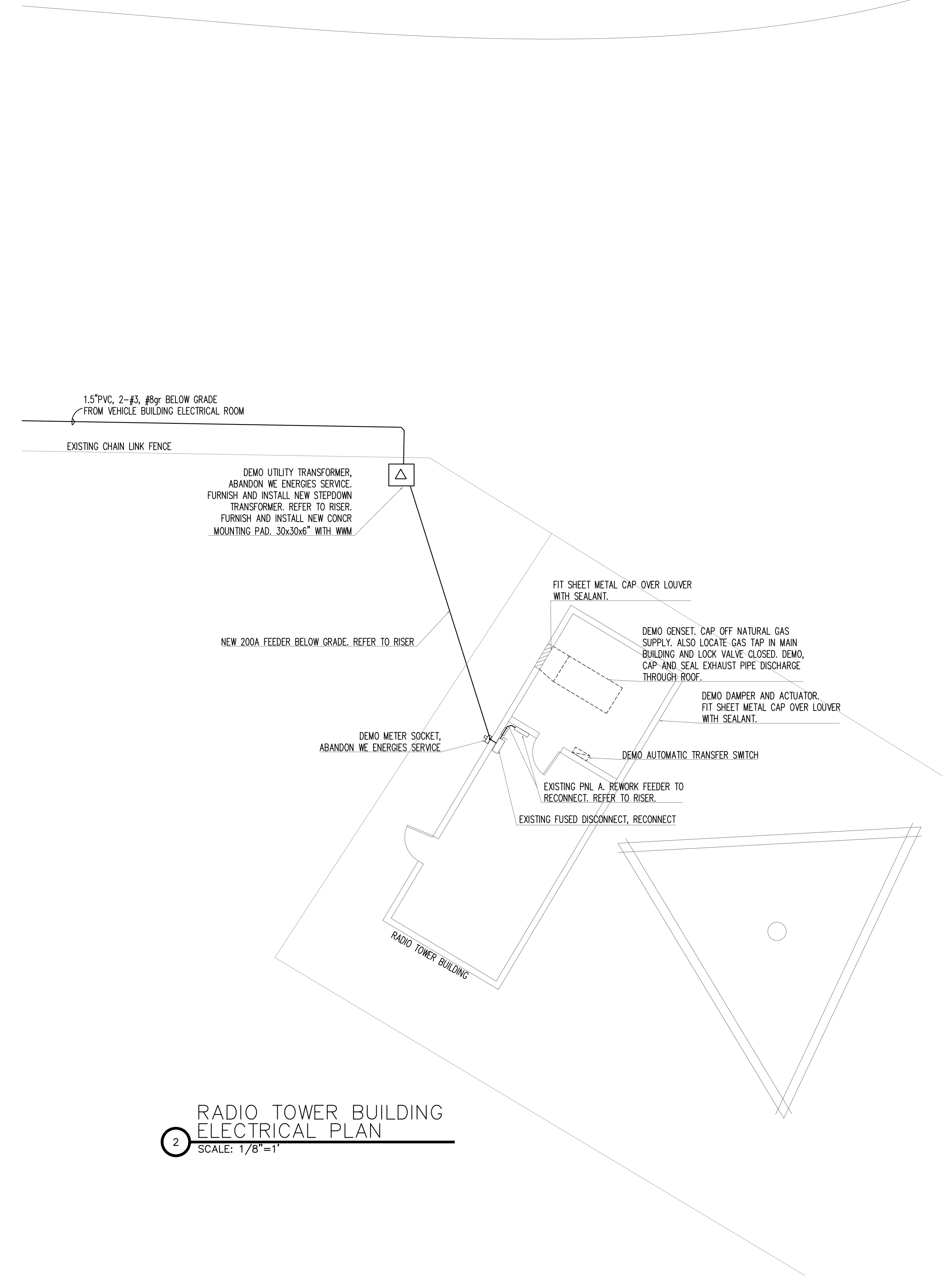
**2** GROUND FLOOR ELECTRICAL PLAN  
SCALE: 1/8"=1'

**1** KEY PLAN  
SCALE: 1/64"=1'

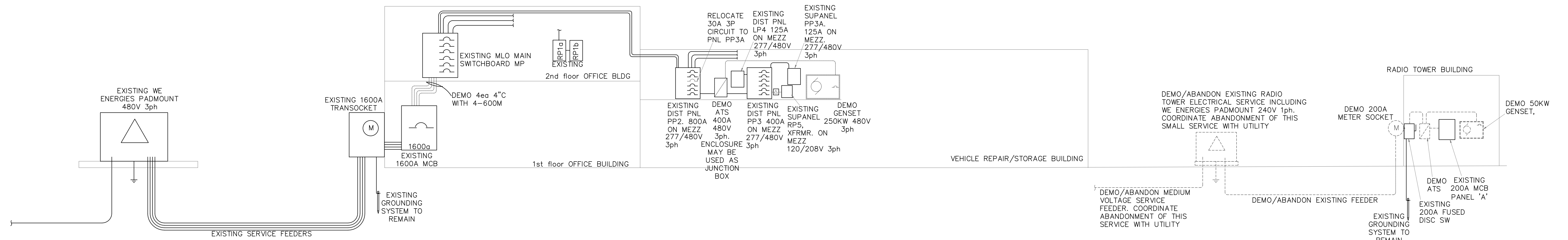
POND



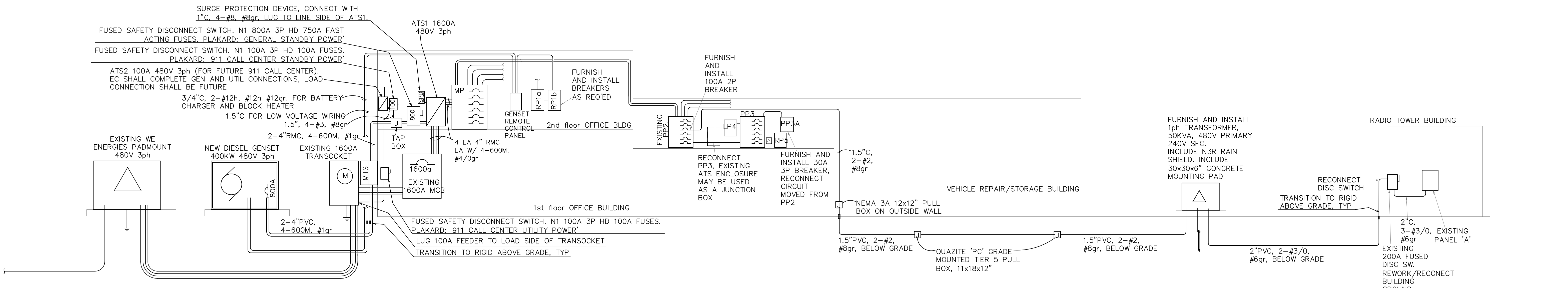
1 MEZZANINE ELECTRICAL PLAN  
SCALE: 1/8" = 1'



2 RADIO TOWER BUILDING ELECTRICAL PLAN  
SCALE: 1/8" = 1'



1 RISER DIAGRAM DEMO/EXISTING  
SCALE: NTS



2 RISER DIAGRAM, NEW  
SCALE: NTS

**GENERATOR, TRANSFER SWITCH SCHEDULE**

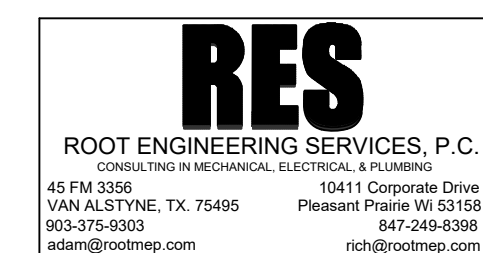
GENSET, 450KW RATED STANDBY. SHALL BE FURNISHED AND INSTALLED BY CONTRACTOR. ENGINE: DIESEL ENGINE LIQUID COOLED FOUR CYCLE INDUSTRIAL, EPA TIER 2 RATING: 450 KW STANDBY (563 KVA), 277/480V 3ph 4w. UL LISTED. INCLUDE COMPLIANT INTEGRAL BASE DAY TANK (850gal), INTEGRAL RADIATOR, FAN, ENCLOSURE, STEEL OUTDOOR WEATHER LEVEL, 2 ATTENUATING CUMMINS F202, SKID BASE, RESIDENTIAL GRADE MUFFLER, ELECTRONIC CONTROLS FOR START/STOP, FREQUENCY AND VOLTAGE REGULATION, ALARMS, AND AUTO SHUTDOWNS. ALSO INCLUDE BATTERY, BATTERY CHARGER, BLOCK HEATER, AND 120V CONVENIENCE RECEPTACLE; CONNECT ALL COMPLETE AND READY TO USE PER MANUFACTURERS INSTRUCTIONS. INCLUDE POWER COMMAND DIGITAL SYSTEM CONTROLLER, INCLUDING PC500 WIFI COMMUNICATION, REMOTE CONTROL PANEL WITH BAR GRAPH AC ANALOG METERS, DISPLAYS OF KVA, FREQ, 3ph VOLTAGE, 3ph CURRENT, CONNECT/SETUP ALL PER MANUF DIRECTION. ELECTRICAL: 277/480V 3 PHASE 4W. BREAKERS: 800A 3P. BASE BID: CUMMINS DFEJ. BASE BID WARRANTY: FACTORY TWO YEARS. ALTERNATE BID WARRANTY: COMPREHENSIVE FIVE YEARS INCLUDING PARTS AND LABOR ALTERNATE BID EQUIV FROM KOHLER, MTU, CATERPILLAR. REFER TO BIDDING INSTRUCTIONS. INCLUDE CONCRETE MOUNTING PAD, SEE DETAIL DN E4. EC TO WIRE AND INSTALL PER MANUFACTURERS DIRECTIONS. COMPLETE AND READY TO USE. INCLUDE FULL MANUFACTURERS' STARTUP AND OWNER TRAINING, INCLUDE A FULL TANK OF FUEL. TRANSFER SWITCHES. ATS1: AUTOMATIC OPEN TRANSFER SWITCH. INCLUDE PROGRAMMABLE EXERCISE TIMER, BATTERY CHARGERS, NEMA 1 ENCLOSURE. VOLTAGE AND RATING 480V 3p 1600A. LABEL FOR GENERAL STANDBY POWER. REFERENCE CUMMINS POWER COMMAND 80. ATS2: AUTOMATIC OPEN TRANSFER SWITCH. 480V 3P 100A. LABEL 'FUTURE 911 CENTER STANDBY POWER'. REFERENCE CUMMINS DTEC NTS: DUAL PURPOSE QUICK CONNECT POWER PANEL AND MANUAL TRANSFER SWITCH. TWO COMPARTMENT OUTDOOR NBR ENCLOSURE; ONE SIDE WITH TWO SETS OF CAMLOCK FITTINGS FOR PORTABLE TEMPORARY GENERATOR CONNECTION, SECOND SIDE WITH MANUAL TRANSFER SWITCH WHICH SELECTS STATIONARY GENSET OR TEMPORARY GENERATOR. 277/480V 3P 800A, WALL MOUNT. ASCD SERIES 300 DUAL PURPOSE QUICK CONNECT. CONTRACTOR SHALL CONFIGURE, WIRE AND INTEGRATE THIS GENSET AND ATS'S WITH THE OWNER'S EXISTING POWER COMMAND SYSTEM. INCLUDE ALL NECESSARY CONTROLLERS, WIRING AND PROGRAMMING, COMPLETE AND READY TO USE. INCLUDE COMPLETE INSTALLATION AND STARTUP ALL IN ACCORDANCE WITH MANUFACTURERS WRITTEN DIRECTIONS. INCLUDE 15' CONDUIT FOR LDW VOLTAGE /REMOTE PANEL. EC SHALL WIRE AND CONNECT ALL ACCESSORIES INCLUDE BLOCK HEATER, RECEPT, BATT CHARGER, LDW VOLTAGE WIRING ALL COMPLETE & READY TO USE.

**SURGE PROTECTOR SCHEDULE**

SPD SQUARE D TYPE EMA, 240KA SURGE CURRENT 277/480V 3ph 4w MCOV 320V SCCR 200KA STATUS LED'S. INCLUDE SWITCH DISCONNECTOR OPTION, SURGE COUNTER OPTION. NEMA 1 SURFACE MOUNT ENCLOSURE.

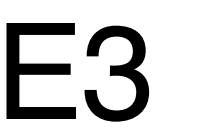
**GENERAL ELECTRICAL NOTES DESIGN BASED ON 2017 NEC**

- THE ELECTRICAL SUBCONTRACTOR SHALL PROVIDE A COMPLETE AND USABLE SYSTEM WITHIN THE INTENT AND SPIRIT OF THAT INDICATED BY THESE DRAWINGS. WORK OR MATERIALS NOT SHOWN BY THE DRAWINGS, BUT NECESSARY TO COMPLETE THE SYSTEM SHALL BE INCLUDED AT NO ADDITIONAL COST. THE ELECTRICAL SUBCONTRACTOR SHALL FURNISH AND INSTALL ALL ELECTRICAL SYSTEM REQUIREMENTS INCLUDING FIRE ALARM DEVICES, SWITCHES, RACEWAY, DEVICES, CONDUCTOR, SPECIALTIES, CUTTING AND PATCHING, ETC.
- THE CONTRACTOR SHALL VERIFY ALL EXISTING CONDITIONS, MAKE ADJUSTMENTS TO AVOID CONFLICT. NOTIFY THE ENGINEER IN WRITING OF SIGNIFICANT CONSTRUCTABILITY ISSUES.
- TELEPHONE/DATA OUTLETS, UNLESS NOTED, SHALL BE CIRCUITED BY OTHERS. THE ELECTRICAL CONTRACTOR SHALL PROVIDE A CONDUIT TO AN ACCESSIBLE SPACE.
- THE ELECTRICAL SUBCONTRACTOR SHALL VERIFY PLACEMENT OF ALL RECEPTACLES, WIRING DEVICES, SWITCHES, AND DISCONNECTS WITH ARCHITECTURAL, MECHANICAL AND PLUMBING DRAWINGS AND TRADES BEFORE ROUGHING IN.
- WIRING MEANS AND METHODS SHALL BE THE RESPONSIBILITY OF THE ELECTRICAL SUBCONTRACTOR. THE ELECTRICAL SUBCONTRACTOR SHALL VERIFY CEILING TYPE WITH FIXTURE SELECTION BEFORE ORDERING.
- PANEL BOARDS SHALL BE SQUARE D NOOD OR EQUAL FROM OUTLER HAMMER, OR GE. BREAKERS SHALL BE BOLT-IN TYPE OQB OR EQUAL. 10kvaic MINIMUM.
- CONDUCTOR SHALL BE THW, THWN, OR THHN. CONDUIT SHALL BE GALV. EMT, IMC OR RIGID.
- POWER RECEPTS, WALL SWITCHES, COVER PLATES, ETC. SHALL BE COMMERCIAL GRADE 20 RATED MATCHING THE STYLE AND APPEARANCE OF THE EXISTING DEVICES.
- EQUIPMENT SIZES ARE AS DESIGNED. CIRCUIT BREAKERS, CONDUIT, JUNCTION BOXES, DISC. SWITCHES, CONDUCTOR SIZES, DEVICE LOCATIONS, ETC., SHALL BE ADJUSTED TO THE EQUIPMENT SUBMITTED AND APPROVED FOR INSTALLATION ON THIS PROJECT.
- THE ELECT SUBCONTRACTOR SHALL BE RESPONSIBLE FOR COORDINATION BETWEEN THE ELECTRICAL AND MECHANICAL TRADES TO PROVIDE CLEARANCES ABOVE CEILING BETWEEN RECESSED LIGHT FIXTURES AND THERMAL INSULATION OR COMBUSTIBLE MATERIALS IN ACCORD WITH N.E.C. PARAGRAPH 410-65 & 66.
- THE ELECTRICAL SUBCONTRACTOR SHALL PREPARE A SUBMITTAL PACKAGE WHICH DETAILS PROPOSED EQUIPMENT (FIVE COPIES). AT MINIMUM THE SUBMITTAL PACKAGE WILL CONTAIN DETAILED DATA ON LIGHTING FIXTURES, PANELBOARDS, AND ACCESSORIES. EQUAL EQUIPMENT TO THAT SPECIFIED WILL BE CONSIDERED IF PERFORMANCE, APPEARANCE, SERVICEABILITY AND QUALITY ARE JUDGED BY THE ENGINEER AND/OR ARCHITECT TO BE EQUAL.
- ALL WORK SHALL COMPLY WITH COGNIZANT CODES, REGULATIONS, LAWS AND THE DETERMINATIONS OF THE LOCAL BUILDING OFFICIAL AT NO EXTRA COST. THE CONTRACTOR SHALL INFORM THE ENGINEER IN WRITING OF ANY CONFLICT BETWEEN THE PLANS AND APPLICABLE CODES.
- ALL MATERIALS WILL BE NEW AND IN NEW CONDITION.
- ALL ELECTRICAL CONNECTIONS 120V OR HIGHER SHALL BE THE RESPONSIBILITY OF THE ELECTRICAL SUBCONTRACTOR. MECHANICAL SHALL FURNISH DUCT SMOKE DETECTORS AS REQUIRED TO ELECTRICAL FOR FIRE ALARM INSTALLATION. MECHANICAL SHALL PROVIDE HVAC CONTROL WIRING. ELECTRICAL SHALL COORDINATE EQUIPMENT CONNECTION WITH MECHANICAL AND PLUMBING.
- WHEN SYSTEMS ARE COMPLETE AND OPERATIONAL, A 'PUNCH LIST' INSPECTION SHALL BE REQUESTED BY THE CONTRACTOR. SUCH AN INSPECTION SHALL NOT BE CONDUCTED ON INCOMPLETE OR NON-OPERATIONAL SYSTEMS.
- UPON COMPLETION OF WORK, SUBMIT FOUR COPIES OF OPERATION AND MAINTENANCE MANUALS, AS BUILT DRAWINGS, GUARANTIES AND WARRANTIES. AT MINIMUM, THE CONTRACTOR WILL WARRANTY ALL WORK, EQUIPMENT AND MATERIALS FOR ONE YEAR PAST BENEFICIAL OCCUPANCY.
- ALL RECEPTS, LOCATED IN AREAS SUBJECT TO MOISTURE, OR ON THE EXTERIOR OF THE BUILDING SHALL BE G.F.I. TYPE, IN WEATHERPROOF, TYPE-FS, BOX WITH WEATHERPROOF COVER.
- NO RECEPT OR DEVICE SHALL BE LOCATED WITHIN 4'-0" OF SINKS. OUTLETS NEAR SINKS, OR IN LOCATIONS SUBJECT TO MOISTURE SHALL BE G.F.I. TYPE.
- ALL ELECTRICAL WIRING IN OR ON THE BUILDING SHALL BE IN IMC, RMC, OR EMT, IN ACCORDANCE WITH LOCAL CODE AMENDMENT. ALL EXTERIOR WIRING SHALL BE BURIED IN CONDUIT APPROVED FOR THE ENVIRONMENT IN ACCORDANCE WITH LOCAL CODE AMENDMENT.

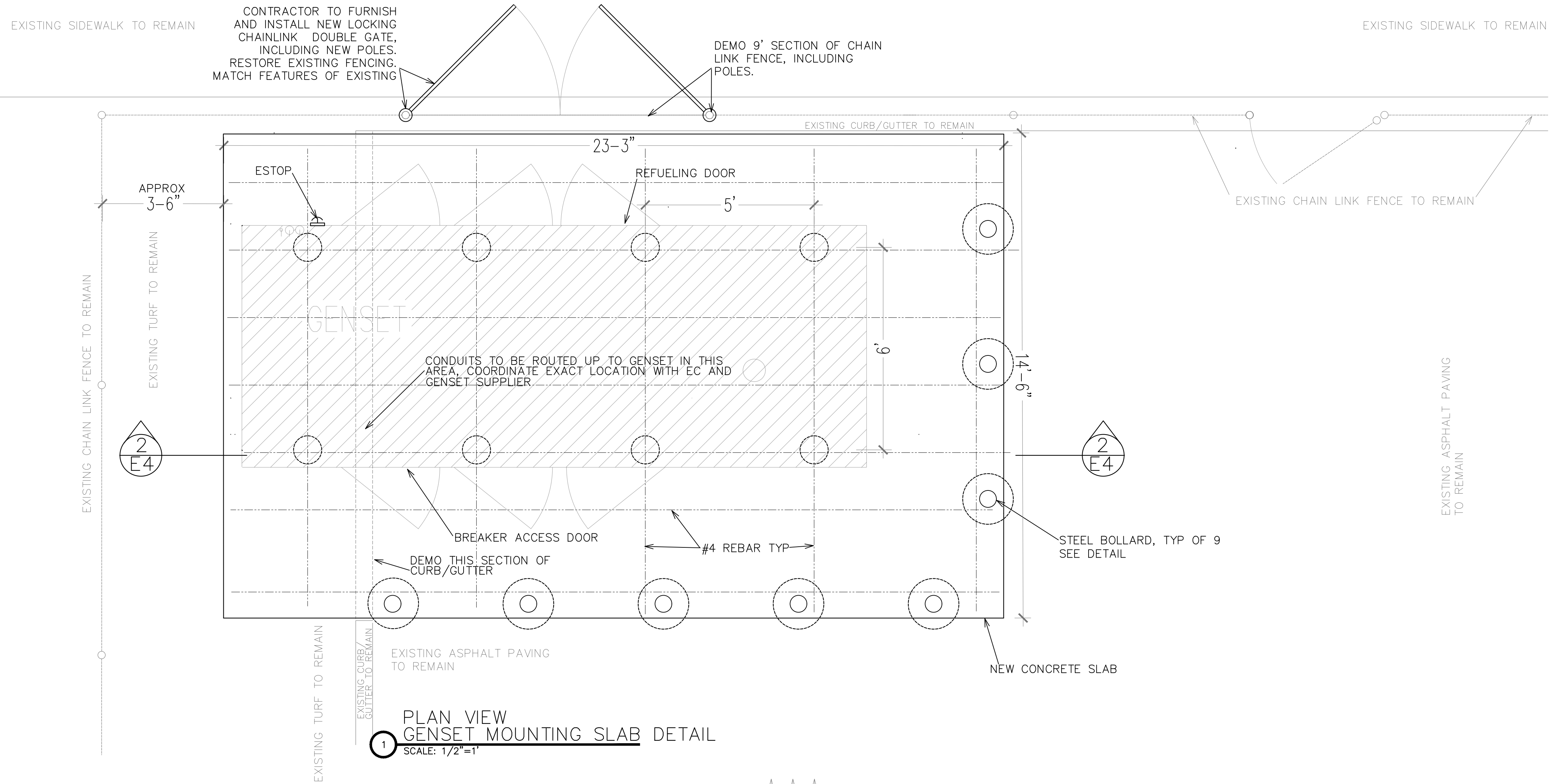


**ELECTRICAL SCHEDULES NOTES AND DETAILS**

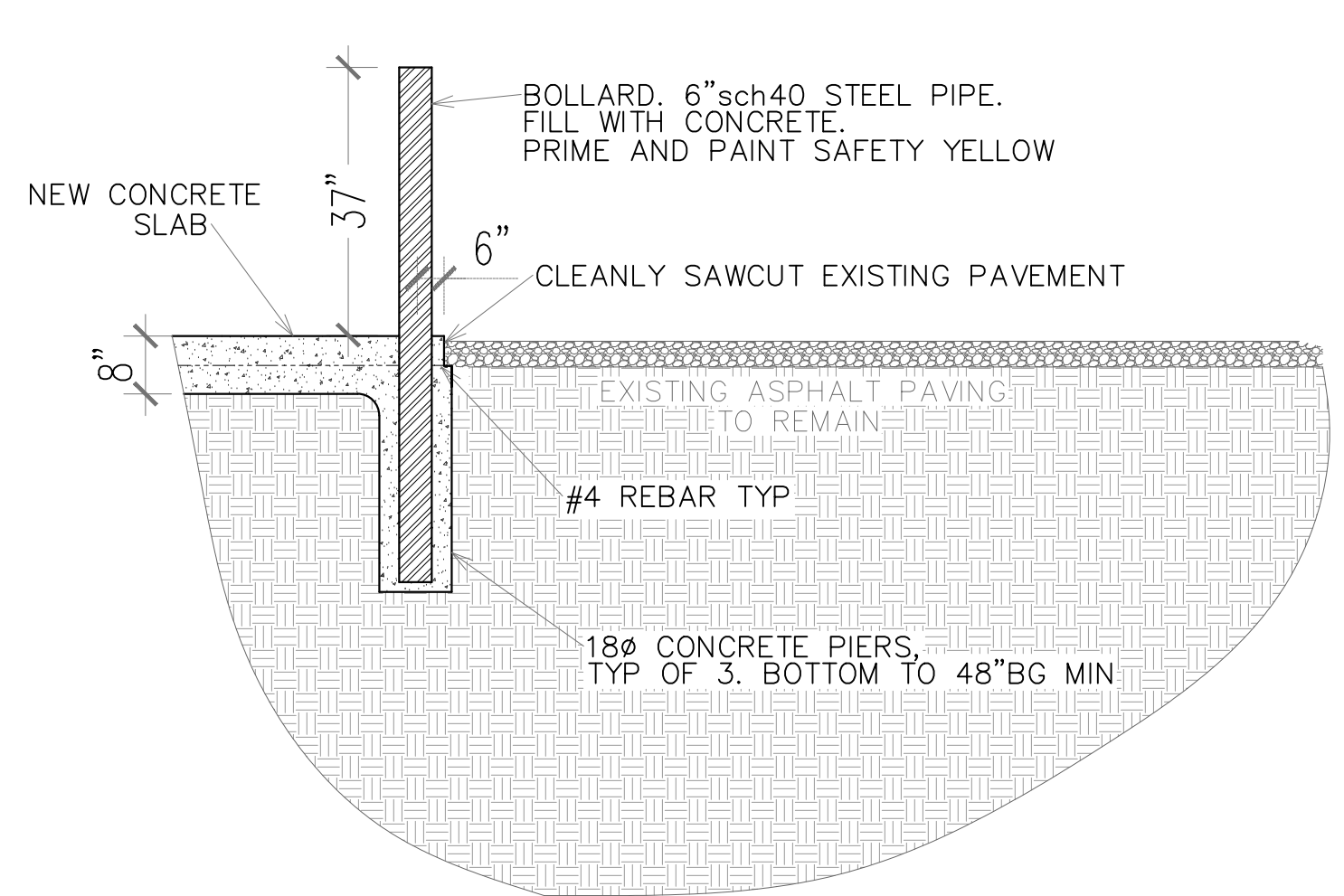
kuenyarch.com ©2023 Kueny Architects L.L.C. - All Rights Reserved  
Kenosha County Center- Generator Installation  
10600 75th St, Bristol, WI  
May 31, 2023



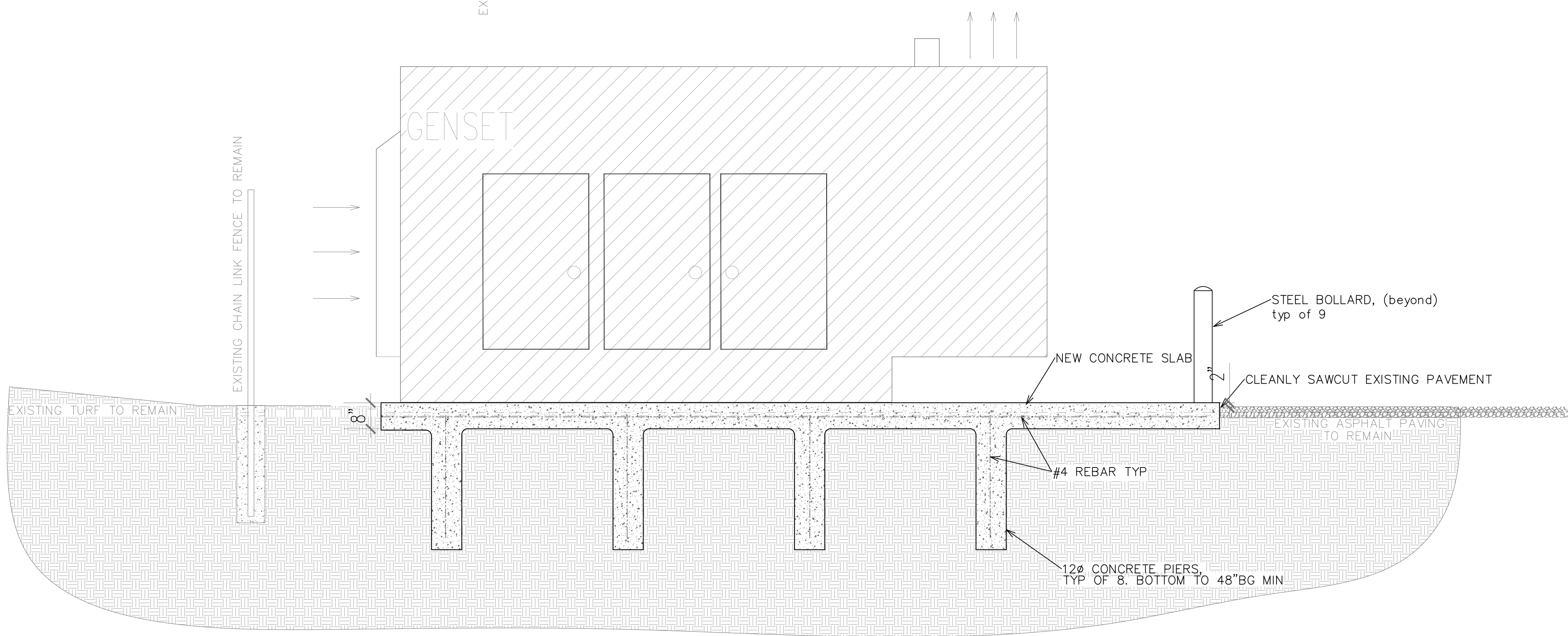
**GENSET MOUNTING PAD:**  
 -3000psi CONCRETE. 8"THICK SLAB WITH PIERS BORED IN UNDISTURBED SOIL AS SHOWN DOWN TO -48"BG.  
 -DO NOT DEMOLISH EXISTING FENCE, CURB/GUTTER, SIDEWALK.  
 -EPOXY COATED #4 REBAR AS SHOWN  
 -NEATLY SAWCUT EXISTING PAVEMENT.  
 -SLAB TO BE LEVEL, ELEVATION TO BE 2" ABOVE CURB/GUTTER EDGE.  
 -STEEL BOLLARDS AS SHOWN, 6"SCH 40 STEEL PIPE FILLED WITH CONCRETE, PRIME AND PAINT SAFETY YELLOW, AS DETAILED



**PLAN VIEW GENSET MOUNTING SLAB DETAIL**  
 SCALE: 1/2"=1'



**SECTION VIEW BOLLARD DETAIL**  
 SCALE: nts



**SECTION VIEW GENSET MOUNTING SLAB DETAIL**  
 SCALE: 1/2"=1'

