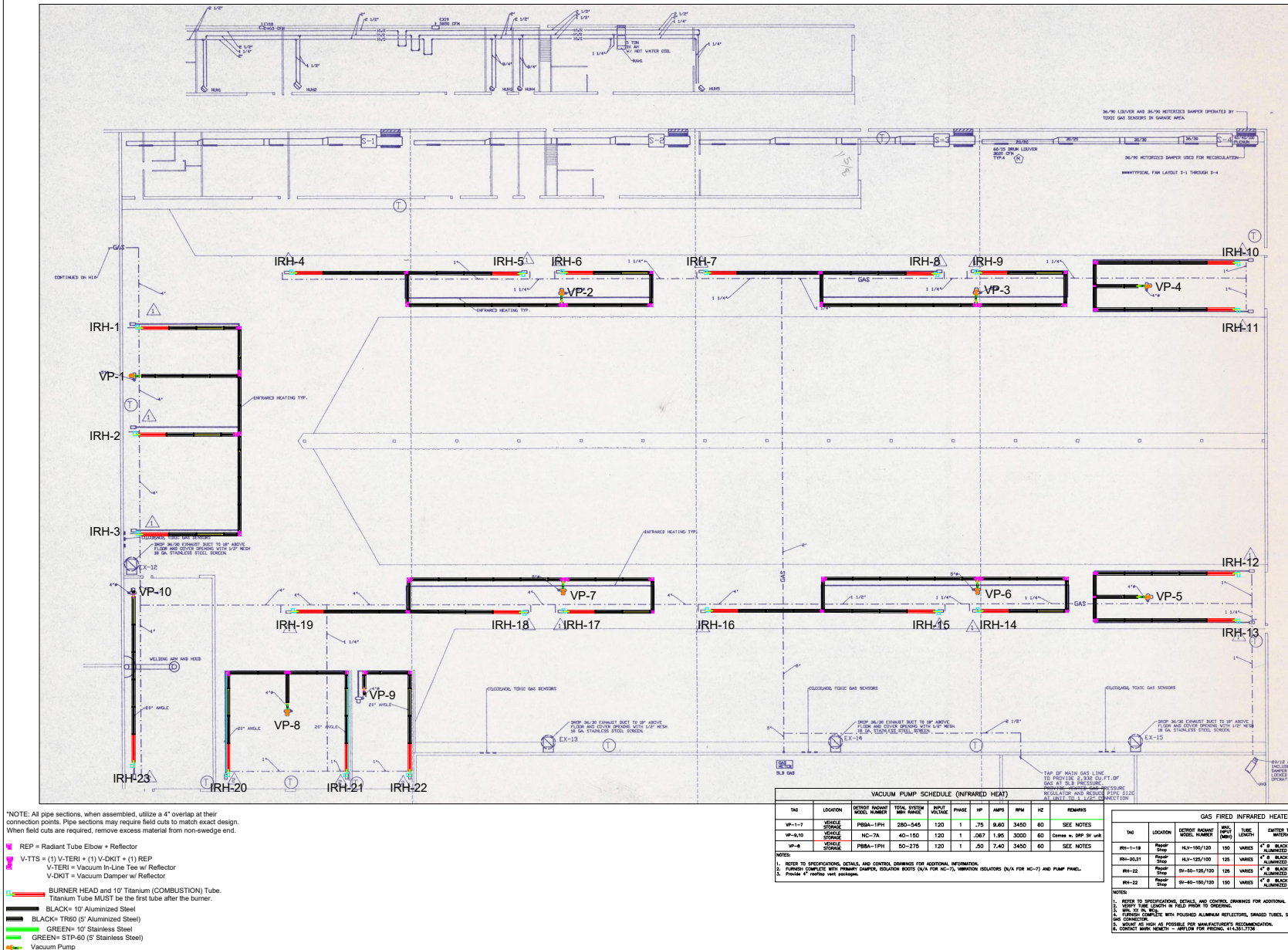


Scale: 1/16" = 1'-0"  
(When printed on 24x36)



**Detroit Radiant Products Co.**  
21400 Hoover Rd. Warren, MI 48089  
586.756.0950 Fax: 586.756.2626

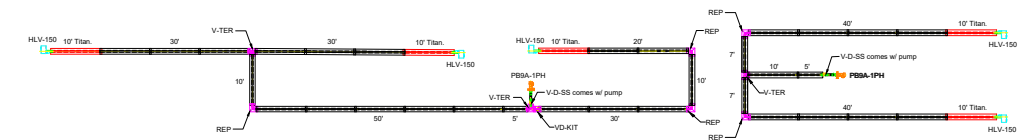


KCC IR REPLACEMENT  
VEHICLE STORAGE  
PROJECT LOCATION:

Please review this drawing carefully and contact your representative with questions. Detroit Radiant will not be held liable for misinterpretations.

[illegible]

REP FIRM:	XXX
DRAWN BY:	XXX
DATE:	XXX
SHEET No.	

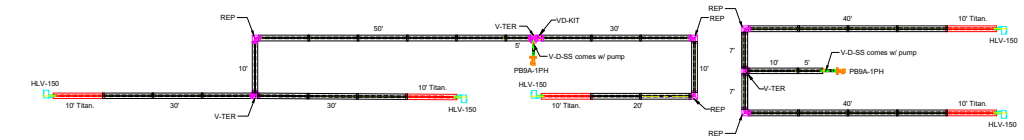


\*NOTE: All pipe sections, when assembled, utilize a 4" overlap at their connection points. Pipe sections may require field cuts to match exact design. When field cuts are required, remove excess material from non-welded end.

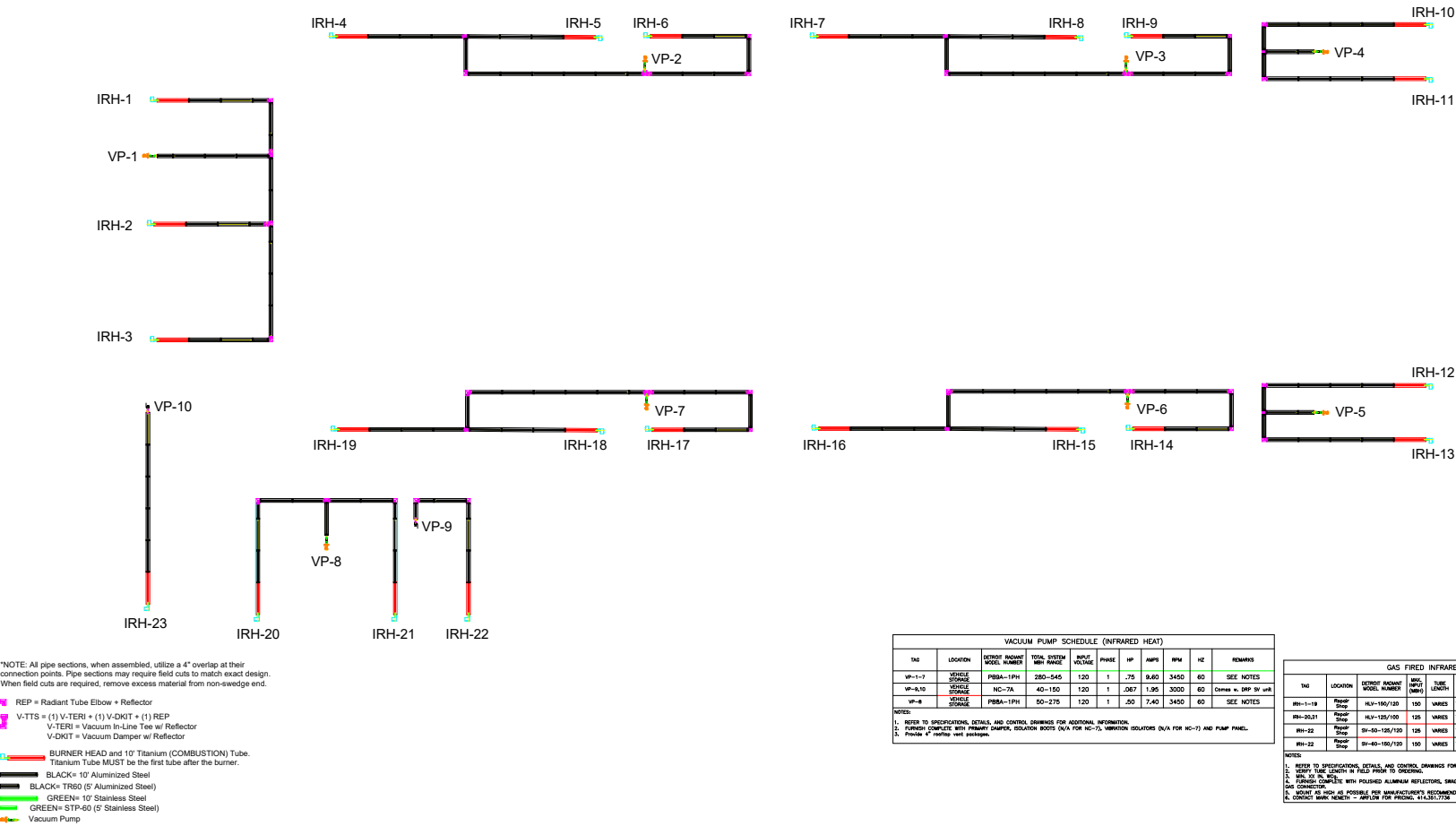
REP = Radient Tube Elbow w/ Reflector  
V-TTS = (1) V-Term + (1) V-Knit + (1) REP  
V-Term = Vacuum Line w/ Reflector  
V-Knit = Vacuum Damper w/ Reflector

BURNER HEAD AND (2) Titanium (COMBUSTION) Tube  
Titanium Tube MUST be the first tube after the burner.

BLACK= 10' Aluminum Steel  
BLACK+TRSD= 10' Aluminum Steel  
GREEN= 10' Stainless Steel  
GRN+STP-60= 10' Stainless Steel  
V= Vacuum Pump



Scale: 1/16" = 1'-0"  
(When printed on 24x36)



VACUUM PUMP SCHEDULE (INFRARED HEAT)										
TAG	LOCATION	DETENT ADJUST VALVE, NAME	TOTAL SYSTEM PIPE RANGE	BOULE IN-LINE	PHASE	HP	AMPS	RPM	HZ	REMARKS
VP-1-7	VEHICLE STORAGE	PBBA-1PH	380-545	120	1	.75	9,60	3450	60	SEE NOTES
VP-8,10	VEHICLE STORAGE	HC-7A	40-150	120	1	.087	1.95	3000	60	Connect to SPP SW unit
VP-6	VEHICLE STORAGE	PBBA-1PH	50-275	120	1	.50	7,40	3450	60	SEE NOTES

NOTES:

- REFER TO SPECIFICATIONS, DETAILS, AND CONTROL DRAWINGS FOR ADDITIONAL INFORMATION.
- PUMPS COMPLETE WITH PRIMARY DAMPER, ISOLATOR BOOTS (N/A FOR HC-7), VIBRATION ISOLATORS (N/A FOR HC-7) AND PUMP PANEL.
- Provide 4" vertical vent isolation.

GAS FIRED INFRARED HEATER SCHEDULE										
TAG	LOCATION	DETENT ADJUST VALVE, NAME	PIPE LENGTH	BURNER TUBE MATERIAL	FLUE TYPE	V	PH	HZ	FLA	REMARKS
IRH-1-18	VEHICLE STORAGE	16V-125/100	125	VARIES	4" B. BLACK COATED ALUMINIZED STEEL	DA	120	1	60	SEE NOTES
IRH-20,21	VEHICLE STORAGE	SV-60-125/100	125	VARIES	4" B. BLACK COATED ALUMINIZED STEEL	DA	120	1	60	SEE NOTES
IRH-22	VEHICLE STORAGE	SV-60-125/100	125	VARIES	4" B. BLACK COATED ALUMINIZED STEEL	DA	120	1	60	SEE NOTES
IRH-23	VEHICLE STORAGE	SV-60-125/100	125	VARIES	4" B. BLACK COATED ALUMINIZED STEEL	DA	120	1	60	SEE NOTES

NOTES:

- REFER TO SPECIFICATIONS, DETAILS, AND CONTROL DRAWINGS FOR ADDITIONAL INFORMATION.
- HEATER TUBE LENGTH IN FIELD PRIOR TO ORDERING.
- HEATER TUBE LENGTH IN FIELD PRIOR TO ORDERING.
- HEATER TUBE LENGTH IN FIELD PRIOR TO ORDERING.
- HEATER TUBE LENGTH IN FIELD PRIOR TO ORDERING.
- HEATER TUBE LENGTH IN FIELD PRIOR TO ORDERING.
- HEATER TUBE LENGTH IN FIELD PRIOR TO ORDERING.
- HEATER TUBE LENGTH IN FIELD PRIOR TO ORDERING.
- HEATER TUBE LENGTH IN FIELD PRIOR TO ORDERING.
- HEATER TUBE LENGTH IN FIELD PRIOR TO ORDERING.
- HEATER TUBE LENGTH IN FIELD PRIOR TO ORDERING.

REVISED BY:	DATE
XXX	XXX
XXX	XXX
XXX	XXX
XXX	XXX
XXX	XXX
XXX	XXX
XXX	XXX
XXX	XXX
XXX	XXX
XXX	XXX
XXX	XXX
XXX	XXX
XXX	XXX
XXX	XXX
XXX	XXX
XXX	XXX
XXX	XXX
XXX	XXX
XXX	XXX
XXX	XXX

REP FIRM: XXX
DRAWN BY: XXX
DATE: XXX
SHEET No.

Detroit Radiant Products Co.  
21400 Hoover Rd. Warren, MI 48089  
586.756.0950 Fax: 586.756.2626

KCC IR REPLACEMENT  
VEHICLE STORAGE  
PROJECT LOCATION:

Please review this drawing carefully and contact your representative with questions. Detroit Radiant will not be held liable for misinterpretations.