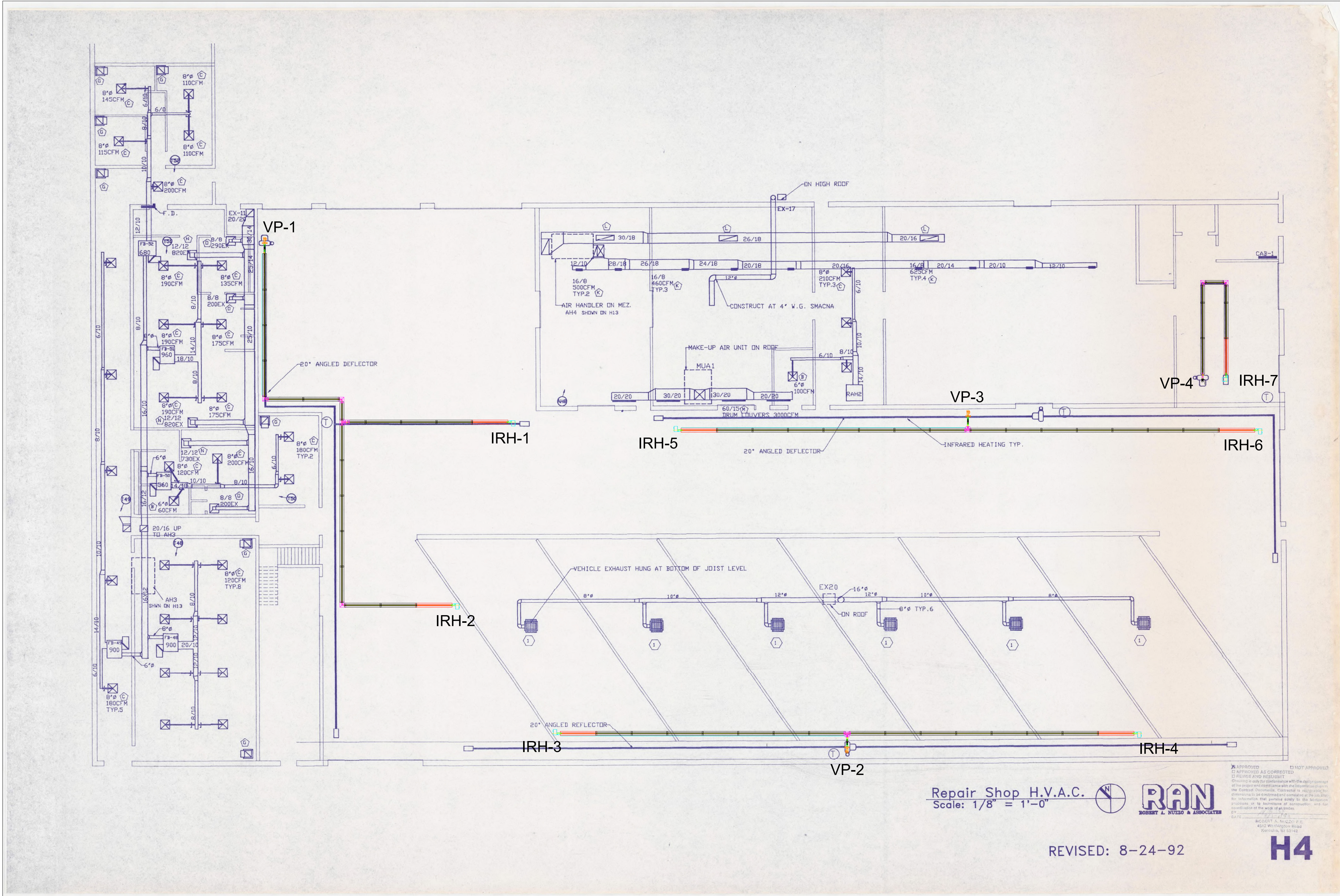


Scale: 1/16" = 1'-0"  
(When printed on 24x36)



\*NOTE: All pipe sections, when assembled, utilize a 4" overlap at their connection points. Pipe sections may require field cuts to match exact design. When field cuts are required, remove excess material from non-swedge end.

- REP = Radiant Tube Elbow + Reflector
- V-TTS = (1) V-TERI + (1) V-DKIT + (1) REP
- V-TERI = Vacuum In-Line Tee w/ Reflector
- V-DKIT = Vacuum Damper w/ Reflector
- BURNER HEAD and 10' Titanium (COMBUSTION) Tube. Titanium Tube MUST be the first tube after the burner.
- BLACK= 10' Aluminized Steel
- BLACK= TR60 (5' Aluminized Steel)
- Vacuum Pump

VACUUM PUMP SCHEDULE (INFRARED HEAT)									
TAG	LOCATION	DETROIT RADIANT MODEL NUMBER	TOTAL SYSTEM MSH RANGE	INPUT VOLTAGE	PHASE	HP	AMPS	RPM	HZ
VP-4	Repair Shop	NC-7A	40-150	120	1	.067	1.95	3000	60
VP-1-3	Repair Shop	PB8A-1PH	50-275	120	1	.50	7.40	3450	60
REMARKS									
VP-4 Comes w. DRP SV unit									
SEE NOTES									

- NOTES:
- REFER TO SPECIFICATIONS, DETAILS, AND CONTROL DRAWINGS FOR ADDITIONAL INFORMATION.
  - FURNISH COMPLETE WITH PRIMARY DAMPER, ISOLATION BOOTS (N/A FOR NC-7), VIBRATION ISOLATORS (N/A FOR NC-7) AND PUMP PANEL.
  - Provide 4" rooftop vent packages.
  - Include condensate traps for VP-1,2.

GAS FIRED INFRARED HEATER SCHEDULE												
TAG	LOCATION	DETROIT RADIANT MODEL NUMBER	MAX. INPUT (MBH)	TUBE LENGTH	EMITTER TUBE MATERIAL	FUEL TYPE	V	PH	HZ	FLA	REMARKS	
IRH-1-6	Repair Shop	HLV-140/112	140	VARIES	4" Ø BLACK COATED ALUMINIZED STEEL	XX GAS	120	1	60	0.7	SEE NOTES	
IRH-7	Repair Shop	SV-50-100	100	VARIES	4" Ø BLACK COATED ALUMINIZED STEEL	XX GAS	120	1	60	0.7	SEE NOTES	
NOTES:												
1. REFER TO SPECIFICATIONS, DETAILS, AND CONTROL DRAWINGS FOR ADDITIONAL INFORMATION.												
2. VERIFY TUBE LENGTH IN FIELD PRIOR TO ORDERING.												
3. MIN. XX IN. W.C.B.												
4. FURNISH COMPLETE WITH POLISHED ALUMINUM REFLECTORS, SWAGED TUBES, STAINLESS STEEL BURNER, MOUNTING CABLES, AND FLEXIBLE GAS CONNECTOR.												
5. MOUNT AS HIGH AS POSSIBLE PER MANUFACTURER'S RECOMMENDATION.												
6. CONTACT MARK BENNETT - AIRFLOW FOR PRICING: 414.551.7736												

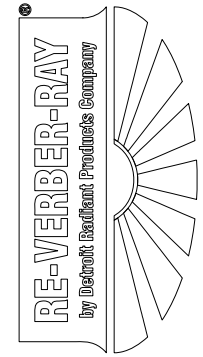
KCC IR REPLACMENT  
REPAIR SHOP  
PROJECT LOCATION:

Please review this drawing carefully and contact your representative with questions. Detroit Radiant will not be held liable for misinterpretations.

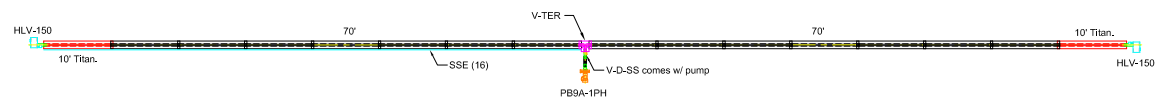
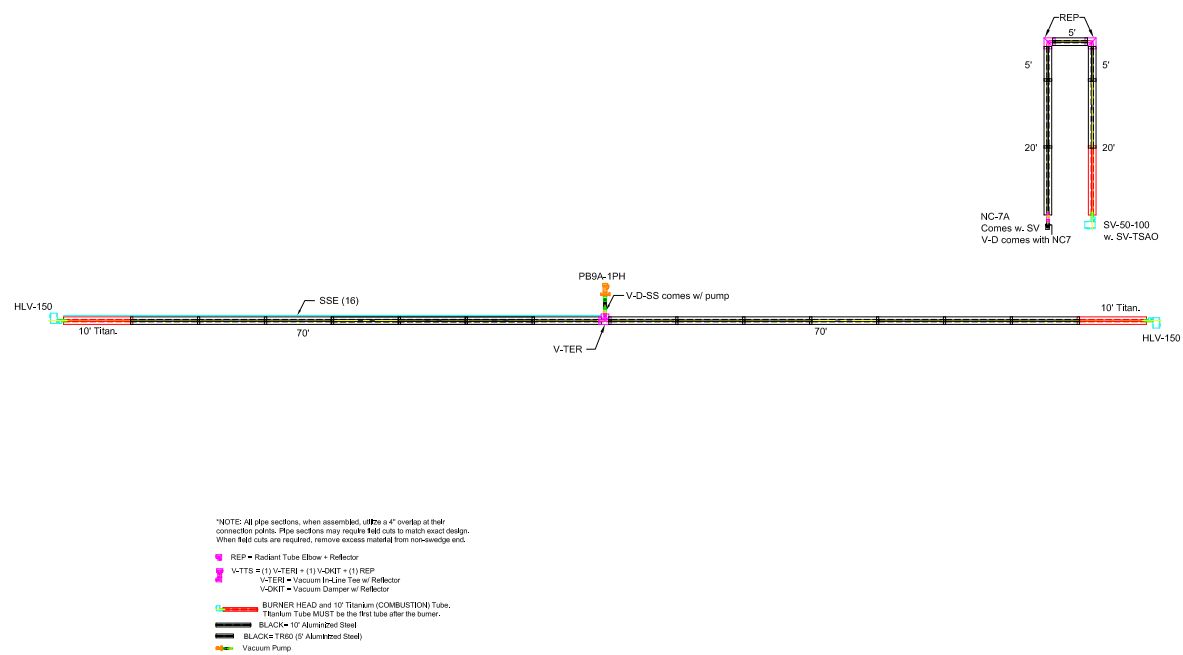
REVISED BY:	DATE
MLK	2-13-23
XXX	XXX
XXX	XXX
XXX	XXX
XXX	XXX
XXX	XXX
XXX	XXX
XXX	XXX
XXX	XXX
XXX	XXX
XXX	XXX
XXX	XXX
XXX	XXX
XXX	XXX
XXX	XXX

REP FIRM: XXX
DRAWN BY: XXX
DATE: XXX
SHEET No.

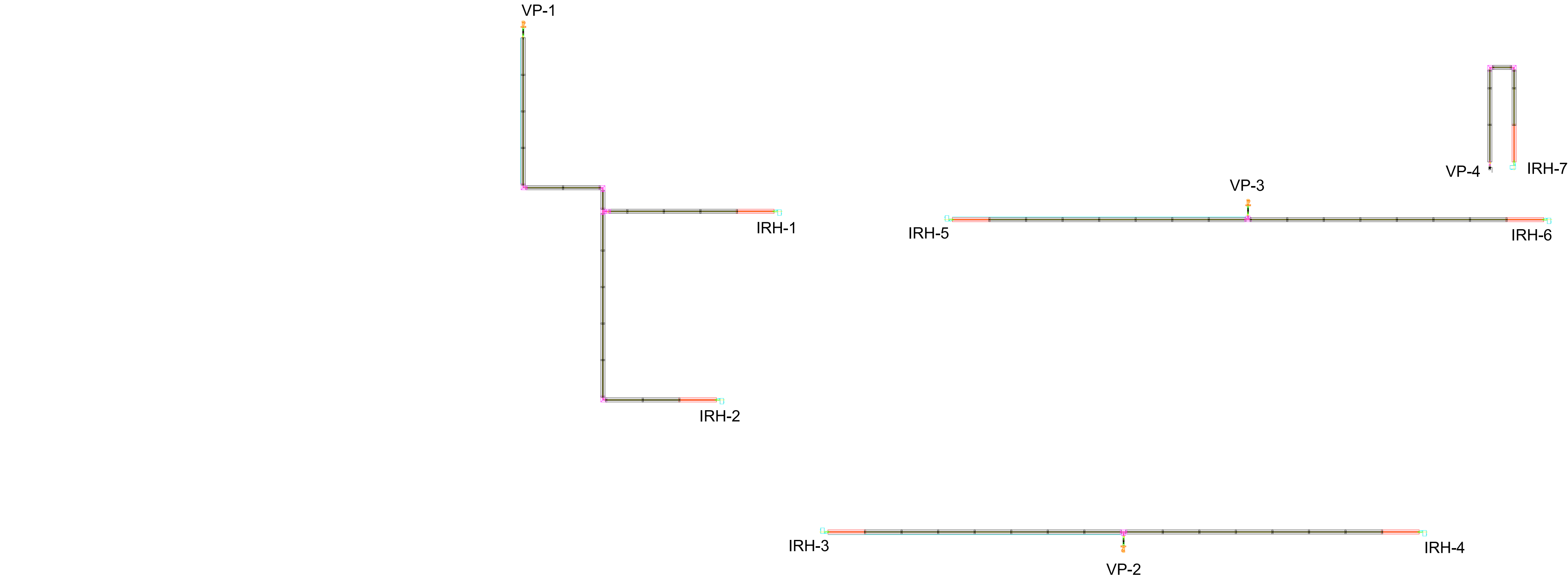
Detroit Radiant Products Co.  
21400 Hoover Rd. Warren, MI 48089  
586.756.0950 Fax: 586.756.2626







Scale: 1/16" = 1'-0"  
(When printed on 24x36)



\*NOTE: All pipe sections, when assembled, utilize a 4" overlap at their connection points. Pipe sections may require field cuts to match exact design. When field cuts are required, remove excess material from non-swaged end.

REP = Radiant Tube Elbow + Reflector

V-TTS = (1) V-TERI + (1) V-DKIT + (1) REP  
V-TERI = Vacuum In-Line Tee w/ Reflector  
V-DKIT = Vacuum Damper w/ Reflector

BURNER HEAD and 10' Titanium (COMBUSTION) Tube.  
Titanium Tube MUST be the first tube after the burner.

BLACK= 10' Aluminized Steel  
BLACK= TR60 (5' Aluminized Steel)

Vacuum Pump

VACUUM PUMP SCHEDULE (INFRARED HEAT)										
TAG	LOCATION	DETROIT RADIANT MODEL NUMBER	TOTAL SYSTEM MBH RANGE	INPUT VOLTAGE	PHASE	HP	AMPS	RPM	HZ	REMARKS
VP-4	Repair Shop	NC-7A	40-150	120	1	.067	1.95	3000	60	Cornes w. DRP SV unit
VP-1-3	Repair Shop	PB8A-1PH	50-275	120	1	.50	7.40	3450	60	SEE NOTES

NOTES:  
1. REFER TO SPECIFICATIONS, DETAILS, AND CONTROL DRAWINGS FOR ADDITIONAL INFORMATION.  
2. FURNISH COMPLETE WITH PRIMARY DAMPER, ISOLATION BOOTS (N/A FOR NC-7), VIBRATION ISOLATORS (N/A FOR NC-7) AND PUMP PANEL.  
3. Provide 4" rooftop vent packages.  
4. Include condensate traps for VP-1,2.

GAS FIRED INFRARED HEATER SCHEDULE												
TAG	LOCATION	DETROIT RADIANT MODEL NUMBER	MAX. INPUT (MBH)	TUBE LENGTH	EMITTER TUBE MATERIAL	FUEL TYPE	V	PH	HZ	FLA	REMARKS	
IRH-1-6	Repair Shop	HLV-14G/112	140	VARIES	4" Ø BLACK COATED ALUMINIZED STEEL	XX GAS	120	1	60	0.7	SEE NOTES	
IRH-7	Repair Shop	SV-50-100	100	VARIES	4" Ø BLACK COATED ALUMINIZED STEEL	XX GAS	120	1	60	0.7	SEE NOTES	

NOTES:  
1. REFER TO SPECIFICATIONS, DETAILS, AND CONTROL DRAWINGS FOR ADDITIONAL INFORMATION.  
2. VERIFY TUBE LENGTH IN FIELD PRIOR TO ORDERING.  
3. MIN. XX IN. WCg.  
4. FURNISH COMPLETE WITH POLISHED ALUMINUM REFLECTORS, SWAGED TUBES, STAINLESS STEEL BURNER, MOUNTING CABLES, AND FLEXIBLE GAS CONNECTOR.  
5. MOUNT AS HIGH AS POSSIBLE PER MANUFACTURER'S RECOMMENDATION.  
6. CONTACT MARK BENETH - AIRFLOW FOR PRICING: 414.551.7736

Detroit Radiant Products Co.  
21400 Hoover Rd. Warren, MI 48089  
586.756.0950 Fax: 586.756.2626

KCC IR REPLACMENT  
REPAIR SHOP  
PROJECT LOCATION:

© 2023 Detroit Radiant Products Co.

Please review this drawing carefully and contact your representative with questions. Detroit Radiant will not be held liable for misinterpretations.

REVISED BY:	DATE
MLK	2-13-23
XXX	XXX
XXX	XXX
XXX	XXX
XXX	XXX
XXX	XXX
XXX	XXX
XXX	XXX
XXX	XXX
XXX	XXX
XXX	XXX
XXX	XXX
XXX	XXX
XXX	XXX
XXX	XXX

REP FIRM: XXX
DRAWN BY: XXX
DATE: XXX
SHEET No.