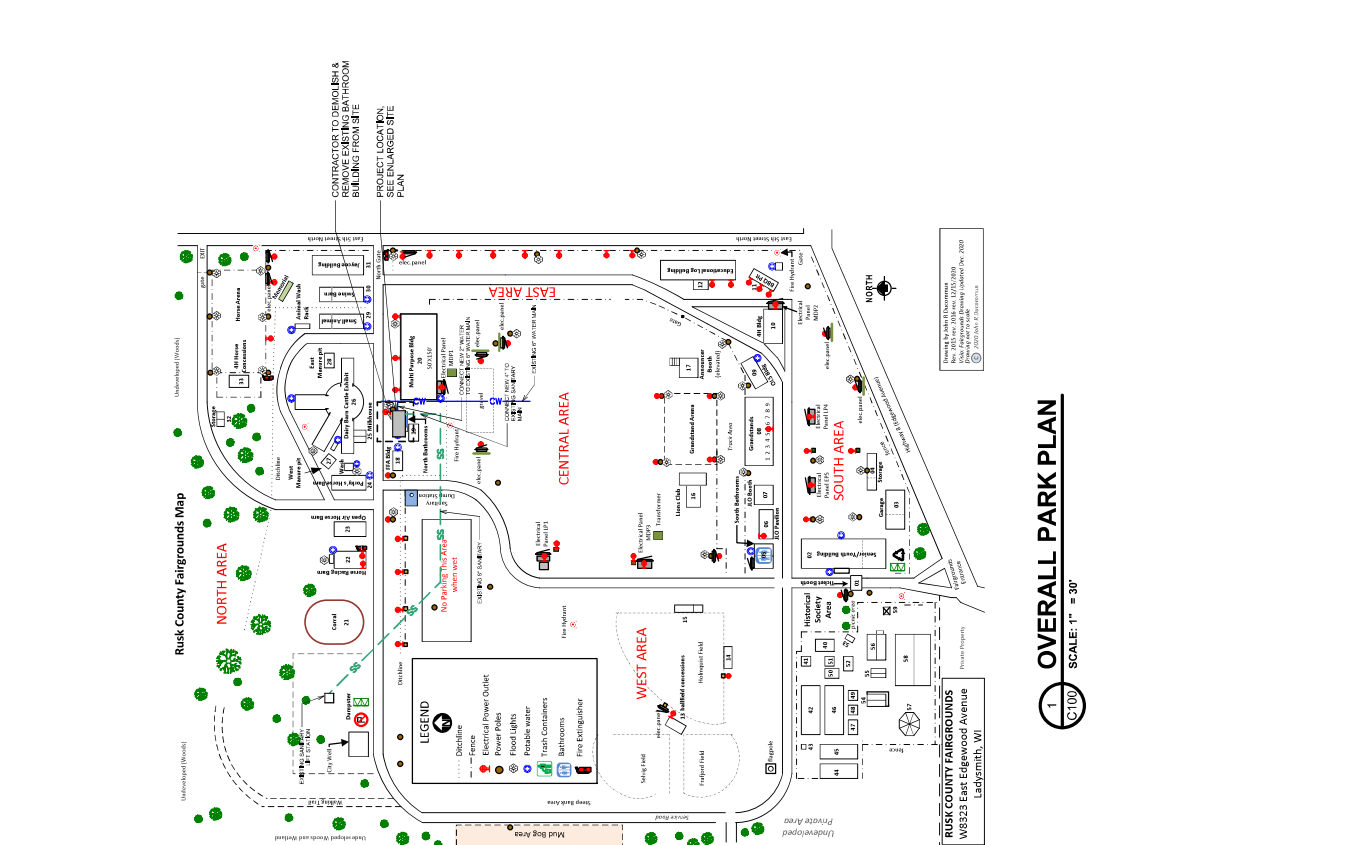
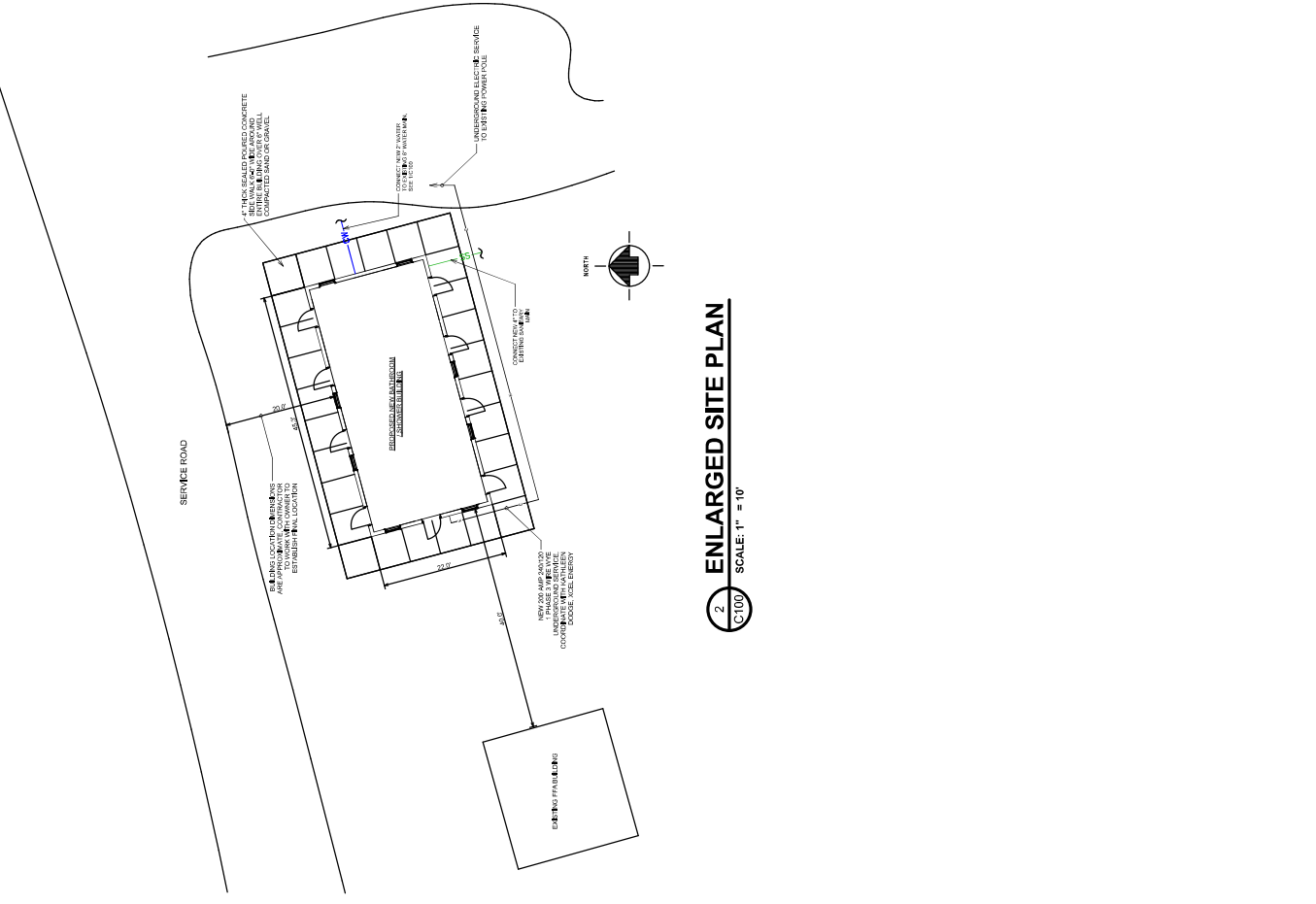


Request for Sealed Bids

Rusk County Fairgrounds Shower Building

- **See Attached Drawings/Notes labeled Addendum A**
 - **All Permits/Utilities By Contractor**
- **Contact Gary Shilts Facilities Manager for a site visit 715-415-5529**
 - **Send sealed bids to Gary Shilts 311 E Miner Ave. Ladysmith Wi. 54848 (Clerks Office)**
 - **Sealed bids due by 3/7/2024 Noon**
 - **Bids open 3/8/2024(Next Property Meeting)**
 - **Bid Awarded 3/26/2024 (County Board Meeting)**
 - **Construction to Begin 4/15/2024**
 - **Substantially Complete 7/12/2024**
 - **Punch List 7/15/2024**
 - **Construction Completion 7/26/2024**
- **Liquidated Damages May Apply If Work Not Complete Before Fair 8/5/2024 – 8/12/2024 (Which Would Include Being Responsible For Supplying 8 Temp. Shower/Restrooms, Labor, Mobilization, Demobilization, Stock Supplies, Hookups, Disconnects, Etc.**



FOUNDATION & FLOOR PLANS

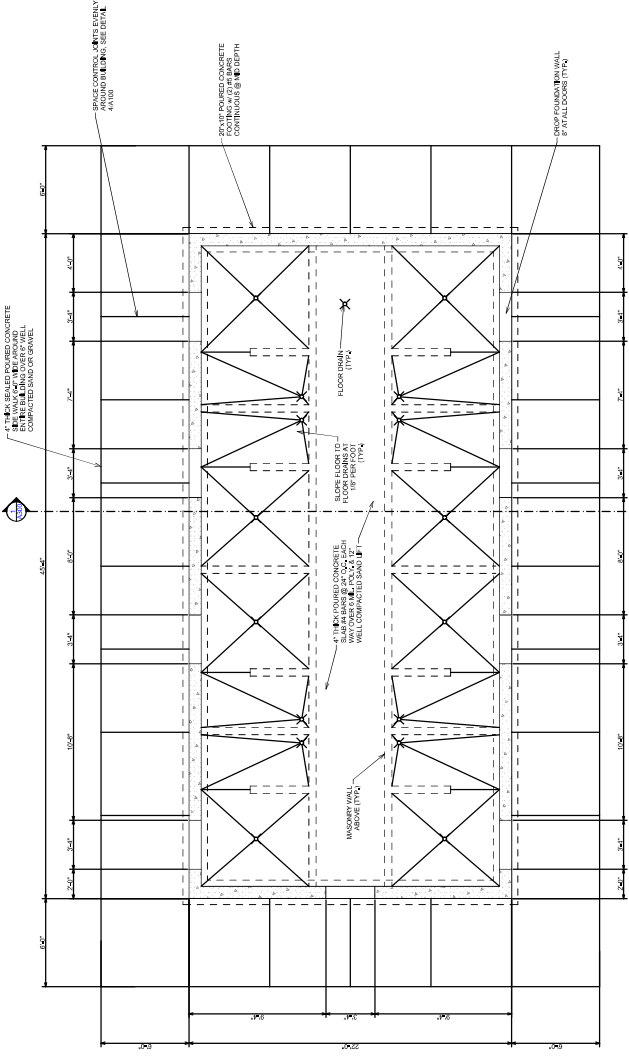
PROPOSED SHOWER BUILDING FOR:
RUSK COUNTY FAIRGROUNDS
 W8323 EAST EDGEWOOD AVENUE, LADYSMITH, WI 54488

DESIGN & ENGINEERING
 With Framework design inc
 2023 6th Street West, Ashland, WI 54806
 Telephone (715) 682-0330 www.csdengineering.com

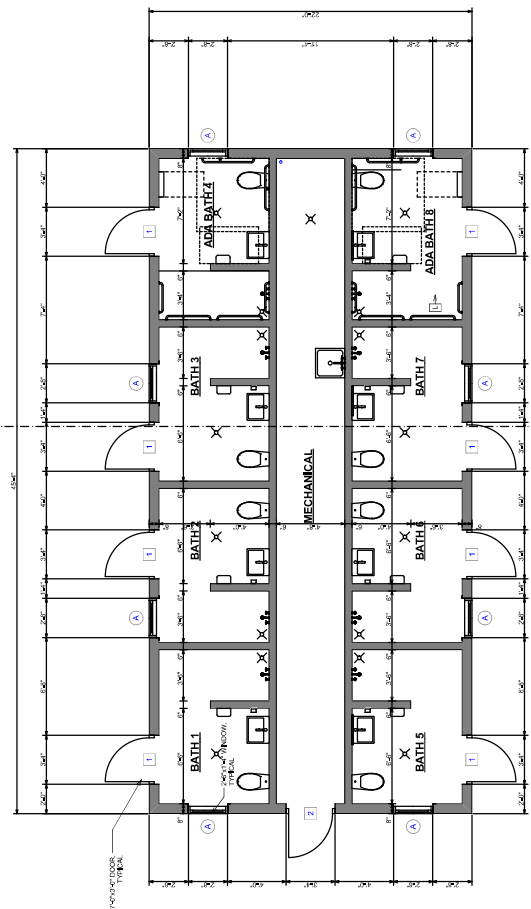
PROJECT NO.	23-3788
DATE	FEBRUARY 2, 2024
SCALE	AS NOTED
TITLE	T.L.P.
DESIGNED BY	LA

APPROVED	
DATE	
BY	
REVISIONS	

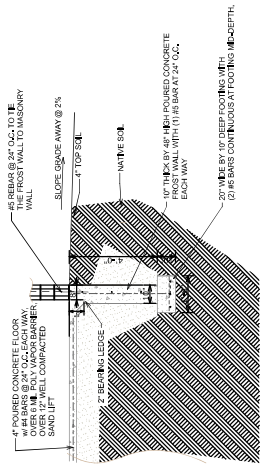
PROJECT NO. **A100**



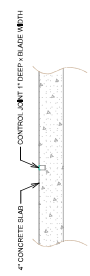
1 FOUNDATION PLAN
 SCALE: 1/4" = 1'-0"



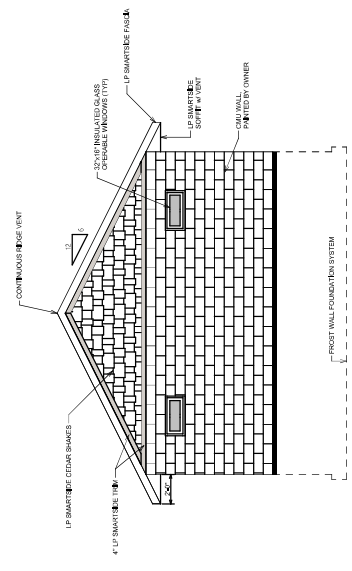
2 FLOOR PLAN
 SCALE: 1/4" = 1'-0"



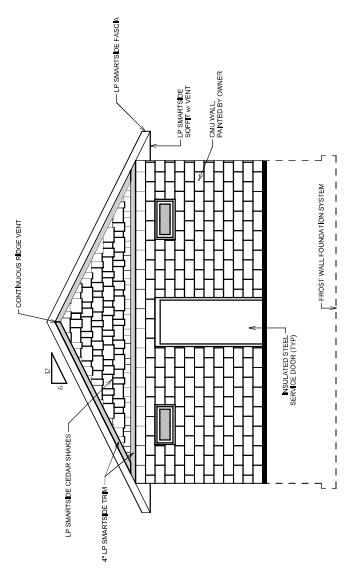
3 FOUNDATION DETAIL
 SCALE: 3/8" = 1'-0"



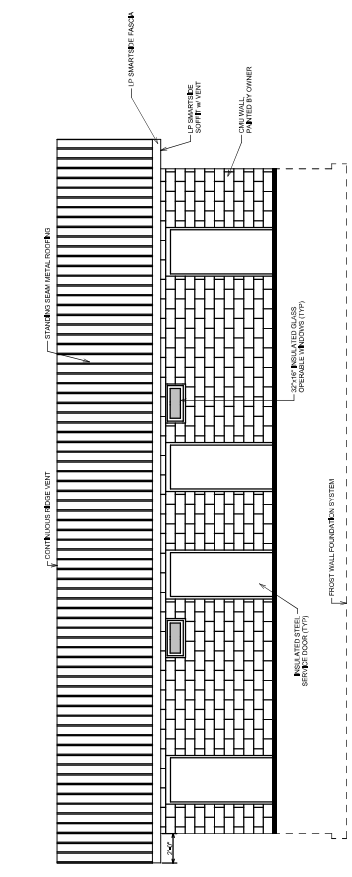
4 CONTROL JOINT DETAIL
 SCALE: 3/8" = 1'-0"



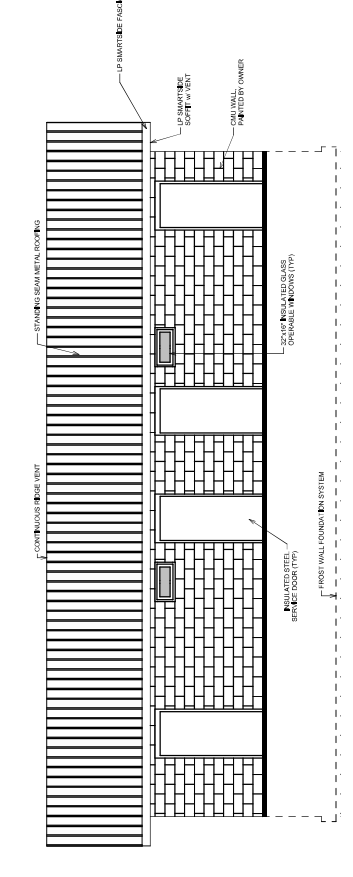
2 EAST ELEVATION
 SCALE: 1/4" = 1'-0"



4 WEST ELEVATION
 SCALE: 1/4" = 1'-0"



1 SOUTH ELEVATION
 SCALE: 1/4" = 1'-0"



3 NORTH ELEVATION
 SCALE: 1/4" = 1'-0"

SYMBOL	QTY	TYPE	UNIT	WIDE OPENING	WALL THICKNESS	MANUFACTURER	GLASS	SEAL	COMMENTS
⊙	6	ALUMINUM	32" x 24"	32" x 24"	8"	COVERED WINDOW	7-4"	BY MANUFACTURER	

1. CONTRACTOR SHALL VERIFY ALL SIZES WITH MANUFACTURER BEFORE ORDERING TO PREVENT DISCREPANCIES.

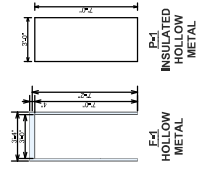
ROOM	FLOOR	WALL	CEILING
NAME	SUBSTRATE	SUBSTRATE	SUBSTRATE
SHOWER ROOMS	CONCRETE	EPOXY	EPOXY BOARD
MICROBIAL ROOM	CONCRETE	CMU	EPOXY BOARD

NOTES:
 1. CONTRACTOR TO VERIFY FINISH SIZES FROM MANUFACTURER.
 2. ONE (1) MILLIMETER (1/8") TOLERANCE SHALL BE MAINTAINED THROUGHOUT ALL FINISHES.
 3. ALL EXTERIOR WALLS SHALL BE FINISHED WITH EXTERIOR GRADE FINISH.

SYMBOL	DOOR TYPE	SWING	FRAME TYPE	DOOR LEAF	HARDWARE	REMARKS
□	INSULATED STEEL	R	STANDARD	1 1/2" GLASS	1	ALL GLASS PARTS SHALL BE NON-FLAMMABLE
□	FLUSH PANEL	R	STANDARD	1 1/2" GLASS	2	ALL GLASS PARTS SHALL BE NON-FLAMMABLE

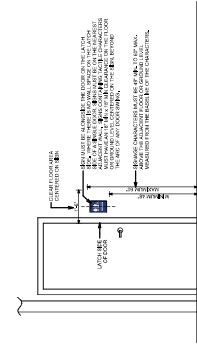
1. CONTRACTOR SHALL VERIFY ALL SIZES WITH MANUFACTURER BEFORE ORDERING TO PREVENT DISCREPANCIES.
 2. ONE (1) MILLIMETER (1/8") TOLERANCE SHALL BE MAINTAINED THROUGHOUT ALL FINISHES.
 3. ALL DOOR HARDWARE SHALL BE ALUMINUM FINISH AND SHALL BE HEAVY DUTY.

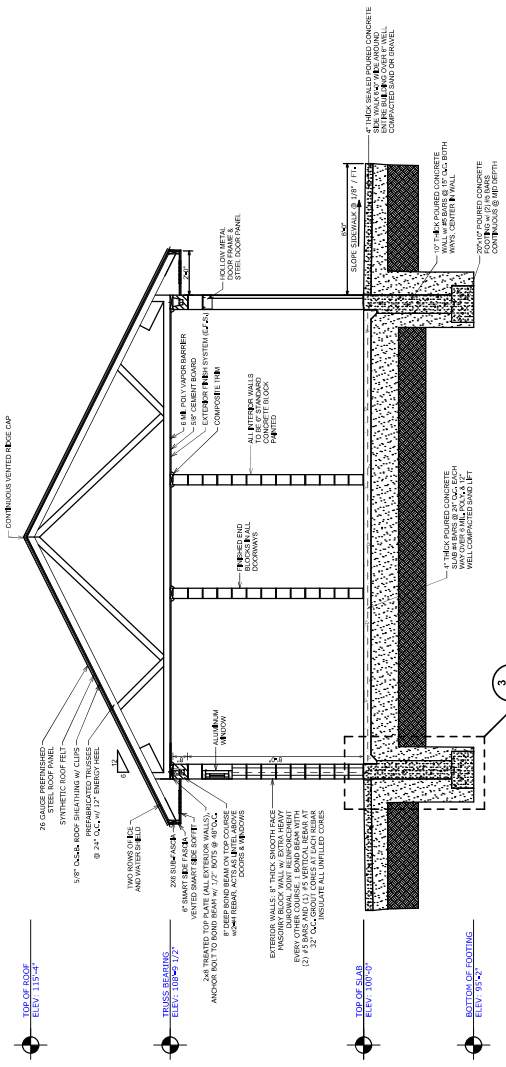
GROUP	DESCRIPTION
GROUP 1	1 EA. BATS 1 EA. PANDA LOCKSET 1 EA. WASH-BRUSH 1 EA. WASH-RESHOLD 1 EA. SWEPT
GROUP 2	1 EA. BATS 1 EA. STOREFRONT LOCKSET 1 EA. WASH-BRUSH 1 EA. WASH-RESHOLD 1 EA. SWEPT



2. DOOR PANEL AND FRAMES SCALE: 1/4" = 1'-0"

3. ACCESSIBLE RESTROOM SIGNAGE SCALE: 3/8" = 1'-0"





1. CROSS SECTION SCALE: 3/8" = 1'-0"

SYM. QTY	DESCRIPTION	MOUNTING HEIGHT	MFR'S CATALOG No.
A 2	1 1/2" DIA. x 42" GRAB BAR	3'-2 1/2" ABOVE FINISHED FLOOR	BOBICK # 8009-42
B 2	1 1/2" DIA. x 36" GRAB BAR	3'-2 1/2" ABOVE FINISHED FLOOR	BOBICK # 8009-36
C 2	1 1/2" DIA. x 18" GRAB BAR	4'-0" ABOVE FINISHED FLOOR	BOBICK # 8009-18
D 4	1 1/2" DIA. x 24" GRAB BAR	3'-0" ABOVE FINISHED FLOOR	BOBICK # 8009-24
E 4	1 1/2" DIA. x 36" GRAB BAR	3'-0" ABOVE FINISHED FLOOR	BOBICK # 8009-36
F 8	COAT HOOK	TOP EDGE TO BE 4'-0" ABOVE F.F.	BOBICK # 8003
G 8	DOORBELL	HORIZONTAL CENTERLINE 3'-0" ABOVE F.F.	BY OWNER
H 2	ACCESSIBLE 24" x 36" MIRROR	BOTTOM EDGE TO BE 4'-0" ABOVE F.F.	BOBICK # 8009 2436
I 6	24" x 36" MIRROR	BOTTOM EDGE TO BE 4'-0" ABOVE F.F.	BOBICK # 8009 2436
J 8	SURFACE MOUNTED SOAP DISPENSER	BOTTOM EDGE TO BE 3'-0" ABOVE F.F. TO CHANGING SURFACE WHEN OPEN	BY OWNER
K 2	BABY CHANGING STATION	3'-0" ABOVE F.F. TO CHANGING SURFACE WHEN OPEN	BY OWNER
L 2	ACCESSIBLE 6" GRAB BAR	BOTTOM EDGE TO BE 4'-0" ABOVE F.F.	BY OWNER
M 6	NATIONAL HAND DRIVERS	BOTTOM EDGE TO BE 4'-0" ABOVE F.F.	BY OWNER

NOTES:
 1. ALL HARDWARE SHALL BE HEAVY DUTY U.S.S. 304.
 2. MANUFACTURER TO BE BOBICK, OR EQUAL.

RUSK COUNTY FAIRGROUNDS
 38323 EAST EDGEWOOD AVENUE, LADYSMITH, WI 54488
 CROSS SECTION & DETAILS

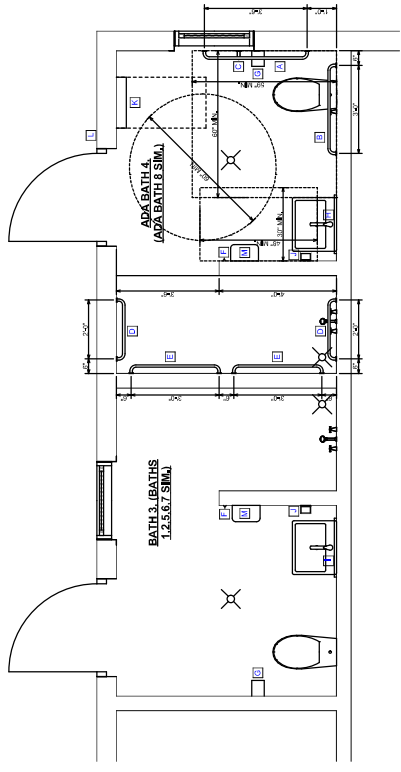
DESIGN & ENGINEERING
 With FRAMEWORK design INC.
 2023 6th Street West, Ashland, WI 54806
 Telephone (715) 682-0310
 WWW.CSDESIGNENGINEERING.COM

REVISIONS: LA
 DRAWN: T.L.P.
 SCALE: AS NOTED
 DATE: FEBRUARY 2, 2024
 PROJECT NO.: 23-3788

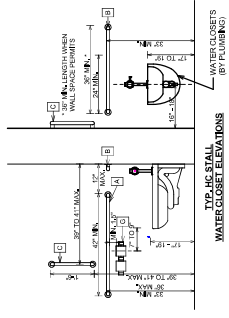
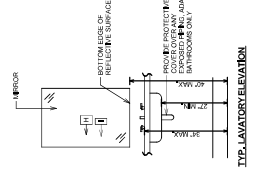
REFERENCES:
 APPROVED:
 PROJECT NO.: A300

BATHROOM ACCESSORY SCHEDULE			
SYMBOL	QTY	DESCRIPTION	MFR'S CATALOG NO.
A	2	1 1/2" DIA. 42" GRAB BAR	342" ABOVE FINISHED FLOOR ROBROK-1 (4490 2438)
B	2	1 1/2" DIA. 36" GRAB BAR	342" ABOVE FINISHED FLOOR ROBROK-1 (4490 2438)
C	2	1 1/2" DIA. 18" GRAB BAR	407" ABOVE FINISHED FLOOR ROBROK-1 (4490 2438)
D	4	1 1/2" DIA. 36" GRAB BAR	367" ABOVE FINISHED FLOOR ROBROK-1 (4490 2438)
E	4	1 1/2" DIA. 36" GRAB BAR	367" ABOVE FINISHED FLOOR ROBROK-1 (4490 2438)
F	8	COAT HOOK	8658R6K (4490 2438)
G	8	HORIZONTAL MIRROR PAPER DISPENSER	BY OWNER
H	2	ACCESSIBLE 24" X 36" MIRROR	ROBROK-1 (4490 2438)
I	6	24" X 36" MIRROR	ROBROK-1 (4490 2438)
J	6	SURFACE MOUNTED SOAP DISPENSER	BY OWNER
K	2	SMY CHANGING STATION	ROBROK-1 (4490 2438)
L	2	ACCESSIBLE STORAGE CABINET	BY OWNER
M	8	ACCESSIBLE 24" X 36" MIRROR	ROBROK-1 (4490 2438)

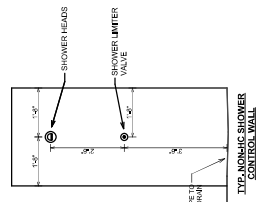
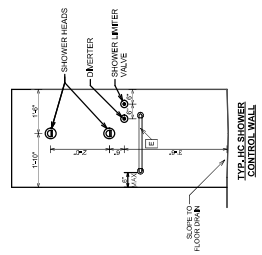
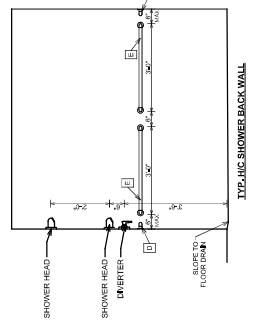
NOTES:
1. ALL HARDWARE SHALL BE HEAVY DUTY USE.
2. MANUFACTURER TO BE ROBROK OR EQUAL.



1 ACCESSIBLE RESTROOM DETAILS - PLAN
SCALE: 1/2" = 1'-0"

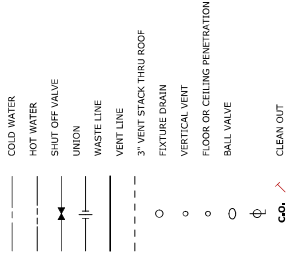


2 ACCESSIBLE RESTROOM DETAILS - WATER CLOSET & LAV.
SCALE: 1/2" = 1'-0"



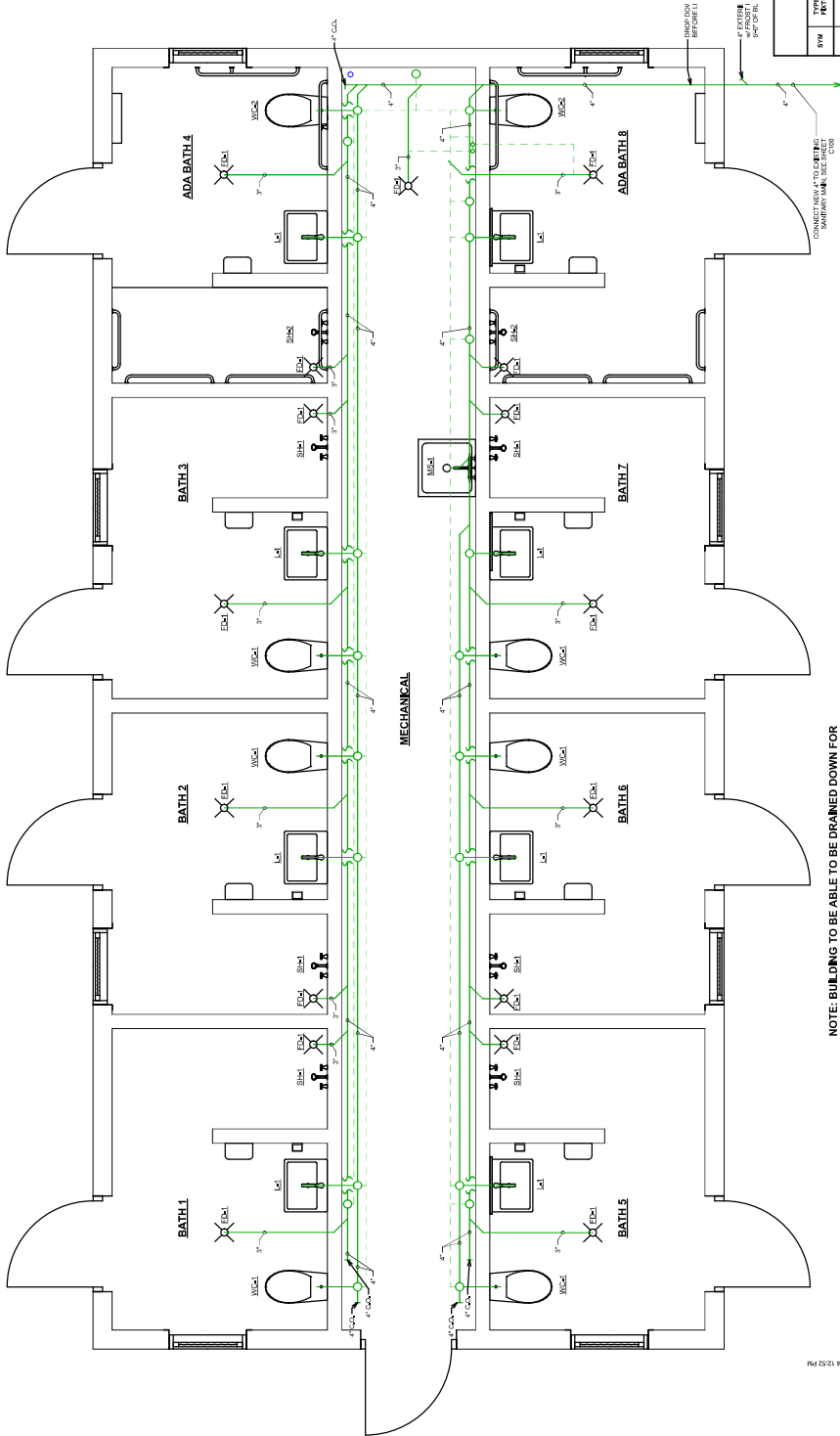
3 ACCESSIBLE RESTROOM DETAILS - SHOWERS
SCALE: 1/2" = 1'-0"

PLUMBING LEGEND



PLUMBING NOTES

1. EACH FIXTURE IS TO HAVE A HOT & COLD SHUTOFF VALVE.
2. H.C. - HANDICAP ACCESSIBLE.
3. N.L.C. - NOT IN CONTRACT.
4. V.S.T.R. - VENT STACK THRU ROOF.
5. ALL FIXTURES AND FLOOR DRAINS ARE TO BE PROVIDED WITH A TRAP AND BE PROPERLY VENTED.
6. ALL PLUMBING TO BE INSTALLED IN ACCORDANCE WITH STATE OF WISCONSIN PLUMBING CODE.



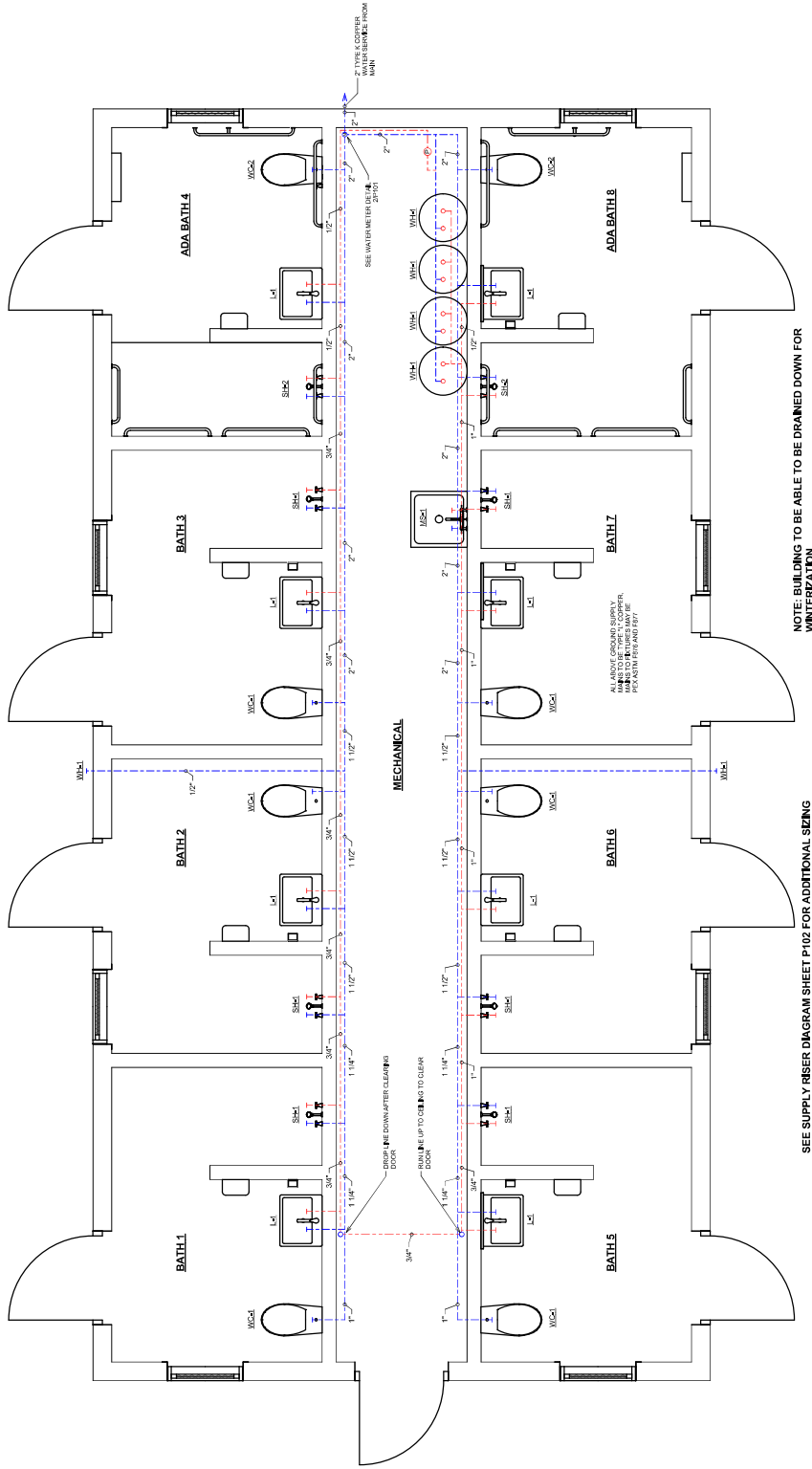
NOTE: BUILDING TO BE ABLE TO BE DRAINED DOWN FOR WINTERIZATION

PLUMBING WASTE PLAN

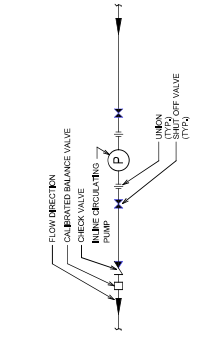
SCALE: 1/2" = 1'-0"
 SEE WASTE & VENT RISER DIAGRAM SHEET P102 FOR ADDITIONAL SIZING

SYM	TYPE OF FIXTURE	QTY.	CATALOG NO.	SPQ	TOTAL	WPSQ	TOTAL	REMARKS
WC1	WATER CLOSET	6	"HOLLAND" "WELLWOOD" "ECLAIR"	6	36	6*	36	PROVIDE 3/4" BRASS OPEN PUSH VALVE. FLOOR VALVE HANDLE 2" ABOVE FINISH TO FRONT. REBILT L.O.P.
WC2	H.C. WATER CLOSET	2	"HOLLAND" "HOLLAND" "HOLLAND"	6	12	6*	12	PROVIDE 3/4" BRASS OPEN PUSH VALVE. FLOOR VALVE HANDLE 2" ABOVE FINISH TO FRONT. REBILT L.O.P.
SH	SHOWER	6	VALVE WITH SHOWER HEAD & SHOWER PAN	-	-	-	3	18
SH2	H.C. SHOWER	2	VALVE WITH SHOWER HEAD & SHOWER PAN	-	-	-	3	6
L1	H.C. WALKING SHOWER PAN	8	"HOLLAND" "HOLLAND" "HOLLAND"	1	8	1	8	INSTALL 1/2" HP HIGHT ABOVE FR.
MP1	"ECLAIR" "HOLLAND" "HOLLAND"	1	"HOLLAND" "HOLLAND" "HOLLAND"	3	3	3	3	PROTECT 3" CLEAN HOLE TERMINATE WITH RUBBER GUMBO A 1/2" ABOVE FINISH. PROVIDE APPROVED JACKLION PROTECTH.M.
FD1	3" FLOOR DRAIN	17	"HOLLAND" "HOLLAND" "HOLLAND"	3	51	-	-	PROVIDE APPROVED JACKLION PROTECTH.M.
WH	ELECTRIC HEATER	1	"HOLLAND" "HOLLAND" "HOLLAND"	-	-	-	-	PROVIDE 1/2" OVERFLOW
EH1	HEATER	4	"HOLLAND" "HOLLAND" "HOLLAND"	-	-	-	-	PROVIDE 1/2" OVERFLOW
				TOTALS:	110		90	

NOTES: 1. ALL FIXTURES SHALL BE WHITE. 2. SEE WASTE & VENT RISER DIAGRAM SHEET P102 FOR ADDITIONAL SIZING.

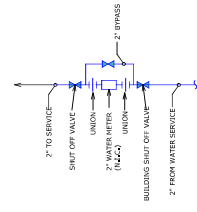


1 PLUMBING SUPPLY PLAN
 SCALE: 1/2" = 1'-0"



3 INLINE RECIRCULATING PUMP
 NOT TO SCALE

2 WATER METER DETAIL
 NOT TO SCALE



RUSK COUNTY FAIRGROUNDS
 38323 EAST EDGEWOOD AVENUE, LADYSMITH, WI 54448
PLUMBING RISER DIAGRAMS

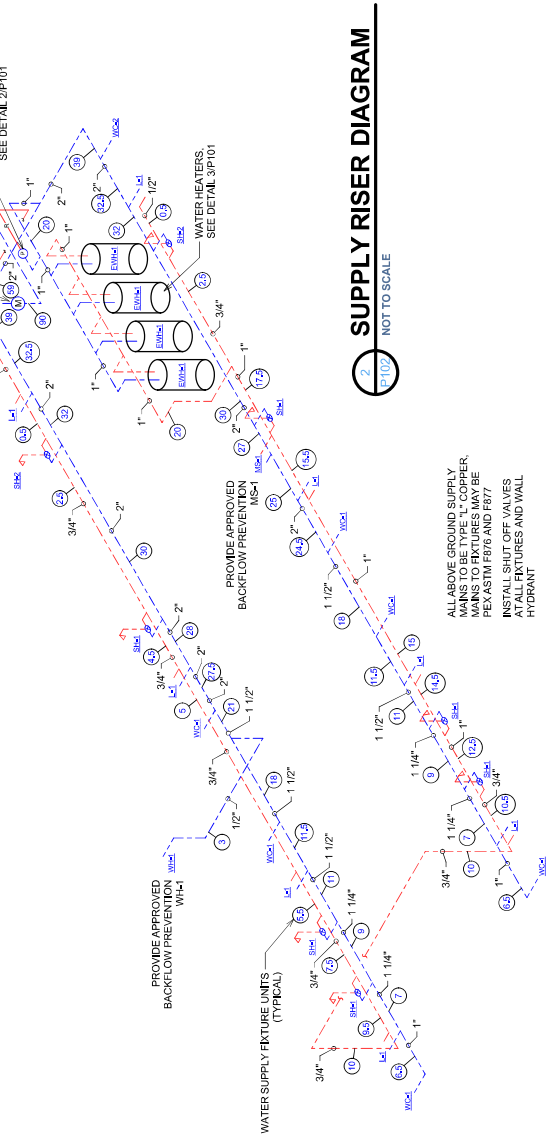
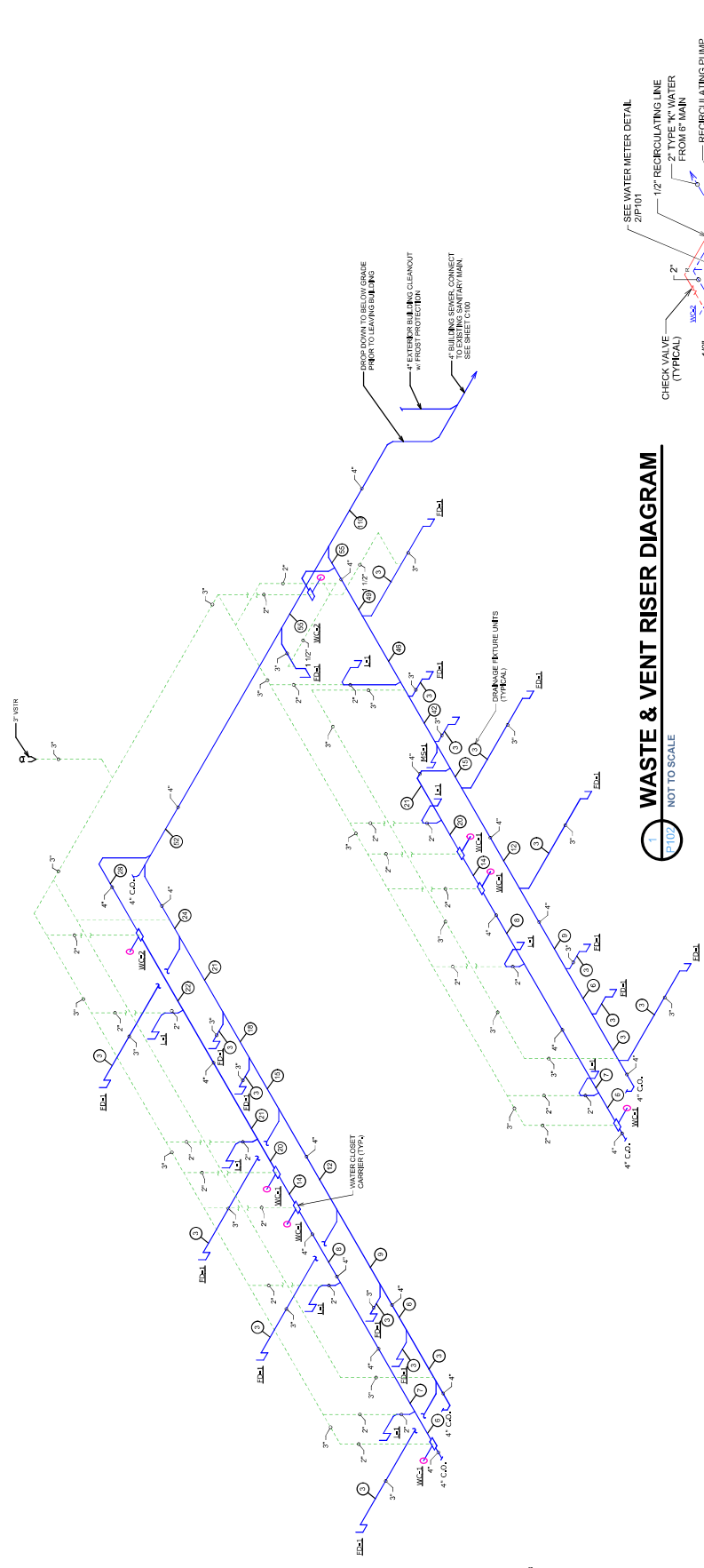
DESIGN & ENGINEERING
 With Framework design inc
 2023 6th Street West, Ashland, WI 54806
 Telephone (715) 682-0330 www.csdesignengineering.com

REFERENCE:	LA
DRAWN:	T.L.P.
SCALE:	AS NOTED
DATE:	FEBRUARY 2, 2024
PROJECT NO.:	23-3788

REVISIONS:	

APPROVED:	

PROJECT NO. **P102**



FAN SCHEDULE

MARK	TYPE	DUTY	CFM	SP	DRIVE	MOTOR HP	FAN RPM	ELEC. CHAR.	BASED ON
EP4	INDUC FAN	TOILET EXHAUST	900	50"	DIRECT	0.5	1,225	110/0601	THERMOSTAT ON 1/4" IN. T.D.

NOTES: LEAK PROOF WALL BRACKET INCLUDES OVERHEAD JOINT BRACKET, VIBRATION ISOLATORS, ROUND DUCT CONNECTION ON INLET & 2. EP4 TO BE INTERLOCKED WITH ROOM LIGHT FIXTURE SWITCHES EACH VENTILATOR IS SERVING.

LOUVER SCHEDULE

MARK	TYPE / SERVICE	THICKNESS (IN)	SIZE (IN)	WALL ROUGH OPENING (IN)	MANUFACTURER AND MODEL	MATERIAL	COLOR & FINISH	APRILLOW (CFM)	REMARKS
L4	STATIONARY EXTRUDED LOUVER WITH OPERABLE BLINDS AND VENT	4"	16 x 16 (NO. 16)	16 x 16	UNIFAB	ALUMINUM	PAINTED	900	ACTUAL LOUVER LENGTH AND WIDTH IS UNDETERMINED BY 1/4" IN. LISTED SPECIFICATIONS ONLY.

NOTE: LOUVERS TO BE SUPPLIED BY HVAC CONTRACTOR AND INSTALLED BY THE GENERAL CONTRACTOR COORDINATE WITH GENERAL CONTRACTOR.

SYMBOLS:

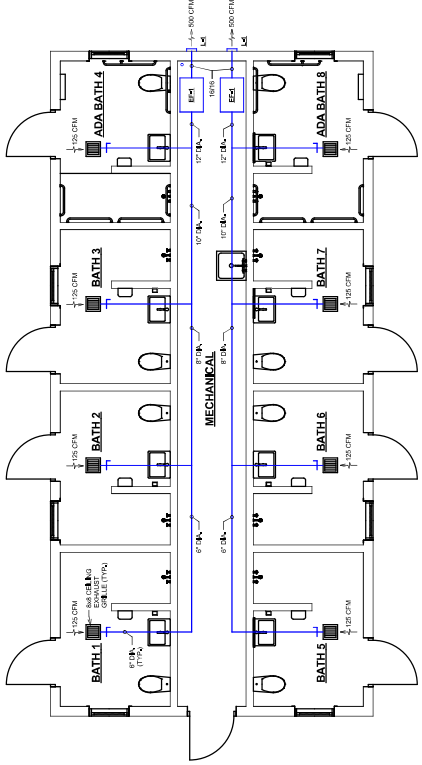
- AIR SUPPLY OR RETURN
- ⊖ THERMOSTAT
- ⊖ EXHAUST GRILLE
- ⊖ DUCT (SIZES AS NOTED)
- ⊖ BALANCING DAMPER

GENERAL AIR SYSTEM AND EQUIPMENT NOTES

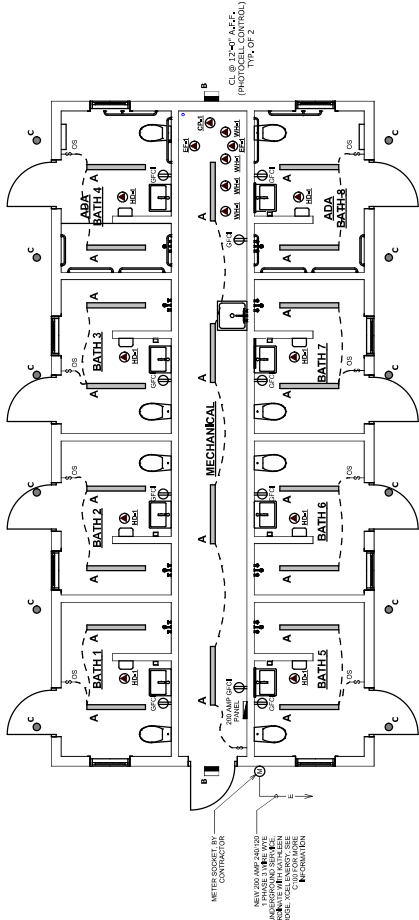
1. All ductwork shall be constructed in accordance with SMACNA standards for type and pressure.
2. Electrical wiring of 110 volts or above is to be the responsibility of the electrical contractor. 24 volt control wiring shall be the responsibility of the mechanical contractor.
3. Electrical lines are to be installed in the exterior of the building.
4. Ventilation is to be continuous during the life expectancy.
5. Testing shall not be performed by a third party for this project.
6. The manual shall include basic data relating to the operation and maintenance of all HVAC systems and equipment. Required routine maintenance schedules shall be clearly identified. Where maintenance and calibration information shall be indicated.
7. Connections prior to start of construction. This includes the General Contractor, Planning Contractor, and Electrical Contractor.

GENERAL DUCTWORK NOTES

1. All ductwork shall be constructed in accordance with SMACNA standards for type and pressure.
2. All ductwork shall be installed in accordance with SMACNA "HVAC Air Duct Leakage Test Manual".
3. All ductwork shall be installed in accordance with SMACNA "HVAC Air Duct Leakage Test Manual".
4. Ductwork is not acceptable for any application.
5. All ductwork shall have a balancing damper at the access, unbalanced dampers, and an balancing indicator on the drawings.
6. All ductwork shall have a balancing damper at the access, unbalanced dampers, and an balancing indicator on the drawings.
7. All ductwork shall be installed in accordance with SMACNA "HVAC Air Duct Leakage Test Manual".
8. All ductwork shall be installed in accordance with SMACNA "HVAC Air Duct Leakage Test Manual".
9. All ductwork shall be installed in accordance with SMACNA "HVAC Air Duct Leakage Test Manual".
10. All ductwork shall be installed in accordance with SMACNA "HVAC Air Duct Leakage Test Manual".
11. All ductwork shall be installed in accordance with SMACNA "HVAC Air Duct Leakage Test Manual".
12. All ductwork shall be installed in accordance with SMACNA "HVAC Air Duct Leakage Test Manual".



HVAC PLAN
SCALE: 1/4" = 1'-0"
M100



ELECTRICAL PLAN
SCALE: 1/4" = 1'-0"
M100

LIGHT FIXTURE SCHEDULE

SYM	TYPE	MANUFACTURERS CATALOG NO.	LAMPS	REMARKS
A	4 FT LED VAPOR BURNER	SYLVANIA VAPOR BURNER	LED	PROTOCOL CONTROL, COLD WEATHER RATED
B	OUTDOOR WALL PACK	HUBBELL W0H14S44-C	LED	PROTOCOL CONTROL, COLD WEATHER RATED
C	OUTDOOR SUFFIT LIGHT	LEONARDO/20S186C1	LED	PROTOCOL CONTROL, COLD WEATHER RATED

NOTES:
 1. PROVIDE FIXTURES AS NOTED ABOVE OR APPROVED EQUAL.
 2. PROVIDE FIXTURES AS NOTED ABOVE OR APPROVED EQUAL.
 3. CONTRACTOR SHALL PROVIDE ALL LAMPS WITH FIXTURES.
 4. DO NOT SUPPORT FIXTURES FROM THE CEILING MATERIALS, USE PROPER BRACKING.