



Finance Department

David P. Schmiedicke, Finance Director

City-County Building, Room 406
210 Martin Luther King, Jr. Boulevard
Madison, Wisconsin 53703
Phone: (608) 266-4521
Fax: (608) 266-5948
finance@cityofmadison.com
www.cityofmadison.com/finance/purchasing

Purchasing Services

REQUEST FOR QUOTATION

RFQ #: 5234-0-2023-BP
For: Steel Poles
Released Date: Tuesday, July 18, 2023
Due Date: Tuesday, August 8, 2023 @ 2:00 PM CST
City Agency: Traffic Engineering

Method of Delivery Options

Email Quotation to: bids@cityofmadison.com

1 GENERAL CONDITIONS AND INSTRUCTIONS TO BIDDERS

1.1 Applicable Terms and Conditions

- Products or Equipment. All quotations for supplies and/or equipment must be submitted in accordance with the specifications contained in this solicitation and City of Madison Standard Terms and Conditions.
- Services. All quotations for services must be submitted in accordance with; the specifications contained in this solicitation, City of Madison Standard Terms and Conditions, and Purchase of Services Contract.
- Copies. Copies of above-referenced forms are available from the Purchasing Office or from the following link:
<https://www.cityofmadison.com/finance/purchasing/vendor-resources>

1.2 Delivered Prices Only

Prices quoted must include shipping charges, FOB Madison.

1.3 Substitutes

If offering a substitute item, include manufacturer, number, model, specifications and product literature. The City will evaluate substitutes and make the final determination of equivalency.

1.4 Partial Order

Unless otherwise noted, it will be assumed that bidder will accept an order for all or part of the items priced.

1.5 Award

The City will award the bid to the responsive and responsible bidder whose bid is most advantageous to the City. In determining the most advantageous bid, the City will consider criteria such as, but not limited to, cost, quality/workmanship, compatibility, standardization, major and minor exceptions to our specifications, superior design features, warranty, delivery, past experience, installation, equality, discount, customer satisfaction, bidder's past performance and/or service reputation, and service capability. The City may opt to establish alternate selection criteria to protect its best interest or meet performance or operational standards. After the due date, no quotes may be withdrawn for a period of 90 days or as otherwise specified or provided by law.

2 CONTACTS

Technical:	For questions regarding technical specifications.	Gretchen Aviles Pineiro City of Madison Traffic Engineering (608) 266-4899 GAvilesPineiro@cityofmadison.com
Buyer:	For questions regarding instructions, terms & conditions.	Brian Pittelli City of Madison Purchasing Services (608) 267-4969 bpittelli@cityofmadison.com

3 BID DISTRIBUTION NETWORK

Please note that the City no longer maintains an in-house bidders' list. **Notification of bid opportunities, addenda, tabulations and awards will only be made to subscribers via these networks.**

State of Wisconsin VendorNet System:	State of Wisconsin and local agencies bid network. Registration is free. http://vendornet.state.wi.us/vendornet
DemandStar by Onvia:	National bid network – Free subscription is available to access bids from the City of Madison and other Wisconsin agencies, participating in the Wisconsin Association of Public Purchasers (WAPP). A fee is required if subscribing to multiple agencies that are not included in WAPP.
Bid Opportunities:	www.cityofmadison.com/finance/purchasing/bidDemandStar.cfm
Home Page:	www.demandstar.com
To Register:	https://www.demandstar.com/app/registration

Please note when registering: Pick the **Wisconsin Association of Public Procurement (WAPP)** to select all current Wisconsin government agencies.

4 LOCAL VENDOR PREFERENCE

The City of Madison has adopted a local preference purchasing policy granting a scoring preference to local suppliers. Only suppliers registered as of the bid's due date will receive preference. Learn more and register at the City of Madison website.

www.cityofmadison.com/business/localPurchasing

5 SPECIFICATIONS

General

It is the intent to describe in these specifications minimum functional and design requirements for galvanized steel street lighting poles for the City of Madison, Wisconsin. In these specifications, a clockwise or counterclockwise direction is as viewed when looking down from the top of the pole.

All poles shall conform to the attached drawings and specifications. ***Exceptions to these specifications shall be submitted to the Traffic Engineer prior to receipt of bids so that there will be time to determine the eligibility of the bidder prior to bid openings.*** The poles shall be round tapered steel shafts with a base welded to the lower end of each, complete with nut covers and the type and number of bracket arms specified in the list of quantities.

All poles shall be designed to withstand a 90-mile-per-hour sustained wind velocity and a 117-mile-per-hour gust velocity, with any bracket arm(s) and typical roadway luminaire(s) in place.

A. Handhole

A 4" x 6-1/2" galvanized handhole shall be provided with a flat cover plate joined to the reinforced handhole frame with two screws. The handhole shall be located 90 degrees clockwise from the bracket arm of single arm poles, that is, at right angles to the curbside edge of the anchor base. For twin-arm poles, the handhole shall be 90 degrees clockwise and 90 degrees counterclockwise from each bracket arm, respectively. The center of the handhole shall be approximately 14" from the bottom of the pole.

B. Shaft

The pole shaft shall be fabricated from the herein-specified manufacturer's standard gauge, best grade, hot rolled basic open hearth, or basic oxygen process steel. The shaft shall have only one (1) longitudinal, electrically welded joint, with the strength rated at not less than 100 percent of the yield strength of the steel and shall have no intermediate horizontal joints or welds. Only one (1) length of steel sheet shall be used, and it shall be formed into a continuously tapered shaft, having a taper of approximately 0.14 inches per foot. The weld shall be smooth, allowing the specified taper to be constant. The pole shall be within 1/4 inch in 10 feet of being straight and centered on its longitudinal axis.

A grounding nut or nut holder for accommodating a 1/2-inch - 13 UNC threaded bolt or stud shall be provided on the inside of the shaft immediately opposite the center of the handhole.

C. Bracket Arms

1. Single-member bracket arms shall conform to the attached drawings and the following specifications. The pole end of the arm shall have a steel fitting welded to it, which will permit the positioning of the arm on the plate of the pole held only by gravity, while the arm is secured to the pole by two cap screws. The bracket shall provide a weather-resistant connection and smooth wiring raceway. (See detail sheet for sketch.) The bracket arm shall attach to the pole approximately 6 inches below the top of the pole.

2. All bracket arms shall be made to accept a luminaire with a two (2) inch slip fitter. (Specific requirements are shown on the attached detail sheet.)

3. All light poles that require more than one bracket arm shall have the simplex fittings located as close as possible to 6 inches down from the top of the pole. If the simplex fittings are located in such a position that it is not possible to weld them to the pole at the specified location, the attachment shall be as follows: The simplex fittings shall be located so that the bottom of the simplex fitting which is at 90° counter-clockwise to the handhole is at the specified distance down from the top of the pole. The other simplex fitting shall be placed with the top of the fitting as close as possible to the specified distance down from the top of the pole.

D. Tenons

The tenon shall have a 9/16" diameter thru hole, on center for thru bolt, parallel to the street to secure the arms that are furnished by others. The tolerance for the hole location will be +/- 1/16" the prescribed distance (3-7/16") above the top of pole. Tenon top shall be 2-3/8" x 5" tall. The pole heights do not include the tenon height

E. Pole-Top Cover

A pole-top cover shall be furnished for each pole non tenon-top pole, which shall be firmly affixed to the pole with setscrews.

F. Anchor Bolts

Not required for these poles.

G. Label

Each steel pole shall have a permanent imprinted metal label attached with rivets midway between the base plate and the handhole. The label shall state the overall pole height, shaft gauge, and year of manufacture. The label shall conform to the curvature of the pole and not have any sharp edges or corners. All rivets shall be smooth inside and outside of the pole.

H. Pole Coatings

After all welding has been completed, the exterior surface of each bracket arm, light pole, and the hardware shall be thoroughly cleaned and shall be free of all loose rust, mill scale, dirt, oil, grease, and other foreign substances.

Where galvanizing is specified, the bracket arms and poles shall be hot-dipped galvanized in accordance with the requirements of ASTM Designation A123-78. The hardware shall be hot-dipped galvanized in accordance with ASTM Designation A153-78. The galvanized finish shall be bright, shiny, and uniform. Matted or dull pole sections will not be accepted.

When galvanizing and paint are specified, the galvanizing shall be completed as above. The galvanized pole shall then be prepared to accept paint. The minimum paint system shall be an epoxy prime paint and polyester polyurethane topcoat paint, applied by electrostatic means, or the manufacturer's best paint system, subject to City review and approval. The paint system chosen shall result in a durable weather-resistant paint well adhered to the pole and suitable for streets with heavy salting and the resulting salt spray from passing vehicles. The black finish paint color shall be a Tiger Drylac RAL 9004 with 80% gloss. The manufacturer shall fully warrant the paint system for five years.

I. Approval of Shop Drawings

Shop drawings shall be submitted to the City of Madison Traffic Engineering Division, PO Box 2986, Madison, WI 53701-2986, Attention: Gretchen Aviles Pineiro (608-266-4899), or by email to gavilespineiro@cityofmadison.com. No poles shall be manufactured until the City has approved the shop drawings. City review and approval of shop drawings will be done within three (3) work days of their receipt unless revisions to shop drawings are necessary as determined by the City. The delivery date specified shall not be extended based on submittal and approval of shop drawings.

SIZE, TYPE, AND QUANTITY OF 2023 STEEL POLE ORDER**PART I: GALVANIZED ROUND POLES**

Item #	Pole Height	Steel Gauge	Required Arms	Features	Bolt Circle	Pole Finish	Required Quantity
1	30'	11	1#	Provide pole simplex & (1) 8 foot arm	11"	Galvanize	65
2	30'	11	2#	Provide twin (2) pole simplex	11"	Galvanize	5
3	30'	7	1#	Provide pole simplex	11"	Galvanize	10
4	30'	11	0*	Drill for fixture mounting before galvanizing	11"	Galvanize	10
5	20'	7	0		11"	Galvanize	20

PART II: GALVANIZED AND PAINTED ROUND POLES

Item #	Pole Height	Steel Gauge	Required Arms	Features	Bolt Circle	Pole Finish	Required Quantity
6	20'	7	0		11"	Galvanize & black paint	10

Provide 8-foot arms as specified, required for this item.

* Drill for side-of-pole fixture mounting, per template to be provided by City of Madison.

GENERAL

All of these poles are to be single-section with an 8" diameter shaft at the base. Poles shall have 0.14 inch per foot taper. Base plates shall have a "slotted" opening for anchor bolts. The base plate shall be a minimum one (1) inch thick for 11 gauge and one and one-quarter (1-1/4) inch thick for 7 gauge poles. Nut covers are required for all poles.

Seven gauge poles will generally be used for aerial cable attachments and/or over-the-lane trombone arm traffic signals. The steel used for these poles shall be at least equal in grade, strength-wise, to the steel for the 11 gauge poles.

Required arms shall be single-member, 8' in length, with a 3' rise.

All poles shall be round except where fluted is specified.

SPECIAL CONDITIONS OF BID (STEEL POLES) 2023:

	<u>Delivery</u>	<u>Liquidated Damages</u>
Part I	90 days	\$100/day
Part II	100 days	\$100/day

Delivery date requirements are from date of Purchase Order.

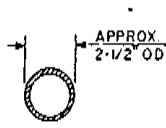
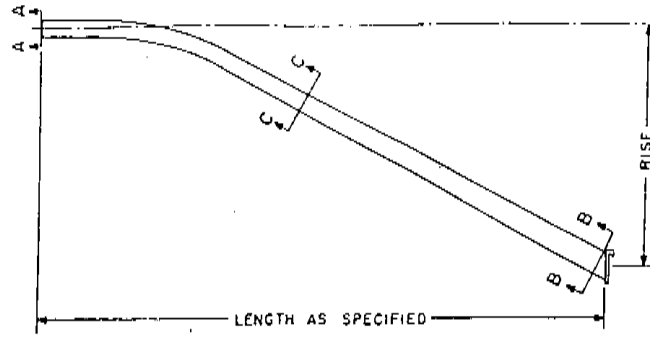
Basis of Award

In addition to price, the product design, construction, performance, and utility for the City of Madison will be considered, as judged solely by the City of Madison.

Delivery Notification: City Of Madison Traffic Engineering shall be notified 48 hours prior to delivery of any items so that personnel and equipment may be available for unloading. Notification shall be made to Ed Smith, 608-266-9034.

All poles are to be delivered to the City of Madison Pole yard at 1120 Sayle Street, Madison, WI 53715

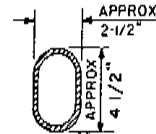
-5-



SECTION A-A

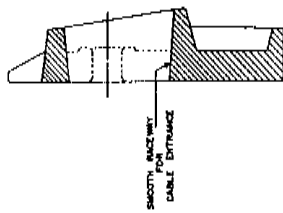


SECTION C-C

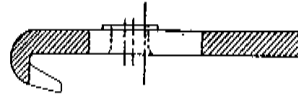


SECTION B-B

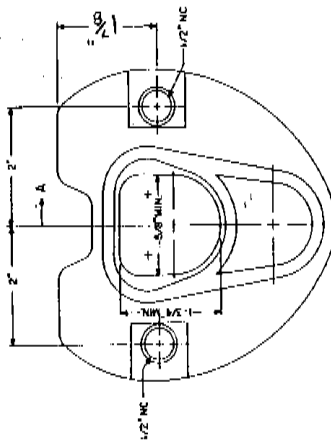
TYPICAL SINGLE MEMBER BRACKET ARM



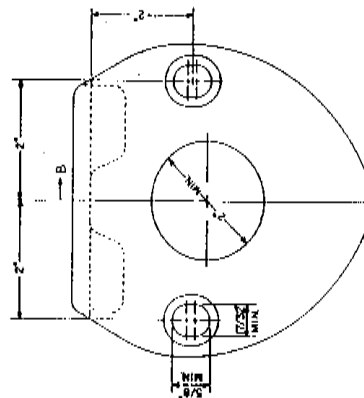
SECTION A-A



SECTION B-B



GALVANIZED STEEL
TYPICAL SIMPLEX FITTING
POLE MOUNTED



GALVANIZED STEEL
TYPICAL SIMPLEX FITTING
MAST ARM MOUNTED



Form A: Price Proposal

RFQ #: 5234-0-2021-BP Steel Poles

This form must be returned with your response.

Complete the requested information and return via instructions on Page 1 of RFQ. Bidder hereby offers:

Part 1: Galvanized Round Poles

Item #	Pole Height	Steel Gauge	Number Of Arms	Features	Bolt Circle	Pole Finish	Required Quantity	Unit Price	Extended Price
1	30'	11	1#	Provide pole simplex & (1) 8 foot arm	11"	Galvanize	65	\$	\$
2	30'	11	2#	Provide twin (2) pole simplex	11"	Galvanize	5	\$	\$
3	30'	7	1#	Provide pole simplex	11"	Galvanize	10	\$	\$
4	30'	11	0*	Drill for fixture mounting before galvanizing	11"	Galvanize	10	\$	\$
5	20'	7	0		11"	Galvanize	20	\$	\$

Part 1 Total \$ _____

Part 2: Galvanized and Painted Round Poles

Item #	Pole Height	Steel Gauge	Number Of Arms	Features	Bolt Circle	Pole Finish	Required Quantity	Unit Price	Extended Price
6	20'	7	0		11"	Galvanize & black paint	10	\$	\$

Part 2 Total \$ _____

Parts 1 and 2 Combined Total \$ _____

Provide 8-foot arms as specified, required for this item.

* Drill for side-of-pole fixture mounting, per template to be provided by City of Madison.

Above bid submitted by:

COMPANY NAME



Form B: Bidder Information

RFQ #: 5234-0-2021-BP Steel Poles

This form must be returned with your response.

BIDDER INFORMATION

COMPANY NAME			
ADDRESS	CITY	STATE	ZIP
BIDDER'S NAME		TITLE	
EMAIL			
SIGNATURE		TELEPHONE NUMBER	
DATE		FAX NUMBER	

LOCAL VENDOR STATUS

The City of Madison has adopted a local preference purchasing policy granting a scoring preference to local suppliers. Only suppliers registered as of the bid's due date will receive preference. Learn more and register at the City of Madison website.

CHECK ONLY ONE:

- Yes**, we are a local vendor *and* have registered on the City of Madison website under the following category: _____ www.cityofmadison.com/business/localPurchasing
- No**, we are not a local vendor or have not registered.